

2024  
Beaverhead  
County  
Fair



Photo Credit: Beaverhead County Museum Archives, 1950

Dillon, MT

August 28 - September 1

HOME OF MONTANA'S

*Biggest Weekend*



# YOUR TRUE AG PARTNER

THE ONLY BANK YOU'LL EVER NEED.

**B<sup>of</sup>** *The Bank of*  
**Commerce**  
YOUR BANK *of a lifetime*

CELEBRATING  
**65**  
YEARS

# Cover Art

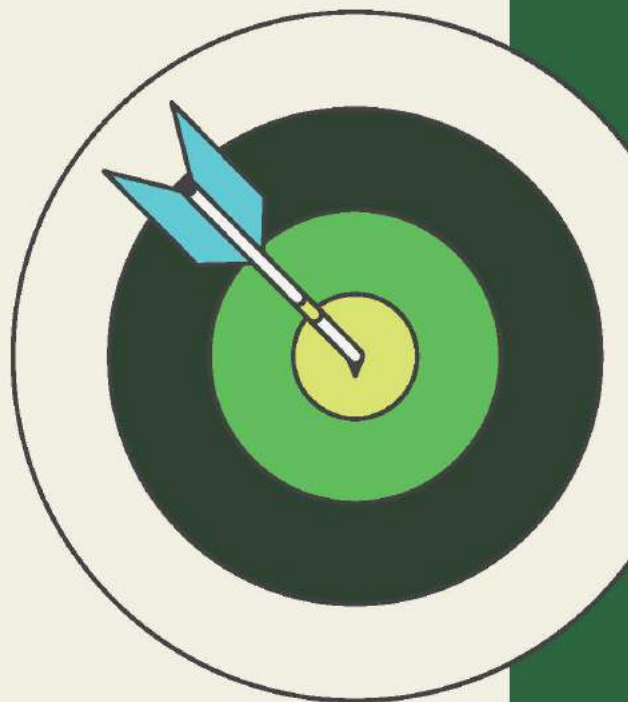
*This year's fair book cover photo was taken in 1950. In the photo are Truman "T.M." McCandless and his partner, Walt Swartz, with their pulling team of draft horses in the Harry Andrus Arena. The original photo belongs to Truman's daughter, Rene Wheeler. Reprint by Sally Dingley. (Photo from Beaverhead County Museum Archives). A big thanks to Rene Wheeler for providing this year's fair book cover photo...a true piece of Beaverhead County Fair history!*

**GOOD LUCK TO  
ALL FAIR  
PARTICIPANTS!**

# 100% accuracy & max refund or your money back.

File with H&R Block  
to get the expert tax  
help you need and  
your biggest refund  
possible, guaranteed.

**IT'S BETTER  
WITH BLOCK**



**File today**

135 S ATLANTIC ST  
DILLON, MT 59725 | 406-683-5033

All tax situations are different. Not everyone gets a refund. See [hrblock.com/guarantees](http://hrblock.com/guarantees) for complete details.




# LOCALLY GROWN, MONTANA KNOWN


Montana rodeo cowboys and cowgirls carry pride in their hometown and state. Their roots are planted in traditional western values, and results. We share the same pride, because our promise is simple: only local, only Montana. Discover the difference of Montana's homegrown, full-service financial institution.



**Stockman Bank**

Member FDIC | Equal Housing Lender 

## Pivots Plus

would like to wish all of the  
 contestants at the  
Beaverhead County  
Fair and Rodeo  
“GOOD LUCK!”

Dillon, Mt  
406-683-4418



**VALLEY** 



**GOOD LUCK TO ALL FAIR  
CONTESTANTS FROM  
SCHUETT FARMS!**

**FAIR TIME**

**SCHUETT FARMS IS A PROUD  
SUPPORTER OF THE  
BEAVERHEAD COUNTY FAIR**

# ★ Outfit Your Life ★★

ANIMAL HEALTH ★ PET  
FENCING ★ CLOTHING  
FOOTWEAR ★ TACK

*It's a way of life.  
Welcome to Murdoch's!*

LAWN & GARDEN ★ AUTO  
TOOLS ★ HARDWARE  
SPORTING GOODS



Perhaps the best part of a Murdoch's shopping experience is that you don't have to be a cowgirl or a ranch hand to be authentic. You just have to be you.

Dillon, MT | 851 N. Montana | 406.683.6855 | [murdochs.com](http://murdochs.com)



# LIVE MUSIC ON THE MIDWAY

ALL PERFORMANCES ARE FREE WITH ADMISSION TO THE FAIR  
PERFORMANCES HELD ON THE STAGE NEXT TO THE 4-H BUILDING

## Thursday, August 29<sup>th</sup>

Steve Rose 4 - 6 P.M.

Karaoke Contest: Prickly Pear Productions 7 - 9 P.M.

## Friday, August 30<sup>th</sup>

Steve Rose 11 A.M. - 1 P.M.

Karaoke Contest: Prickly Pear Productions 7 - 9 P.M.

## Saturday, August 31<sup>st</sup>

Michael Armstrong & The Prairie Fire Noon - 2 P.M.

Morgan Seymour 4 - 6 P.M.

Karaoke Finals: Prickly Pear Productions 6 - 7 P.M.



## --Featured Musicians--

**Morgan Seymour**

**Steve Rose**

**Michael Armstrong & The Prairie Fire**

**Karaoke by Prickly Pear Productions**

JOIN THE FUN! LIVE MUSIC!  
FREE WITH FAIR ADMISSION!





F  
A  
I  
R  
  
B  
U  
T  
T  
O  
N  
S

**\$5 FOR HIGH SCHOOL AGE & UP  
BUY 1 BUTTON FOR THE WHOLE FAIR  
AVAILABLE AT THE GATE, 3D, OR WOMACK'S PRINTING**

# **FAIR BUTTONS**

**EARLY BIRD BUTTON RAFFLE!** Buy your fair button in advance at 3D or Womack's Printing for a chance to win \$100 cash!

**SHINE STUDIO DANCERS AND THEIR FAMILIES WILL BE SELLING BUTTONS AT THE GATE THIS YEAR. A PORTION OF THE PROCEEDS FROM BUTTON SALES WILL SUPPORT OUR LOCAL DANCERS!**



**FEDERAL**  
SAVINGS AND LOAN

*Serving Southwest Montana Since 1912 | "Investing in Our Local Communities"*

**Community Banking at its finest.  
We know our customers because  
they *are* our neighbors!**



For fast, efficient, local service, let Pioneer Federal Savings and Loan take care of all your personal & commercial financial needs!

- Deposit & Savings Accounts
- Tiered Interest Rate Money Market Account
- One-Close Construction Loans
- Personal Loans
- Mortgage Loans
- HELOC
- Commercial Loans

Member  
**FDIC**



32 N Washington St, Dillon, MT 59725 | (406) 683-5191  
202 N Main St, Deer Lodge, MT 59722 | (406) 846-2202

**THE BEAVERHEAD COUNTY FAIR BOARD  
WELCOMES YOU TO THE**

**2024**



**BEAVERHEAD COUNTY FAIR**

**THANKS TO ALL OF OUR EXHIBITORS,  
SPONSORS AND CONTRIBUTORS!**

**BEAVERHEAD COUNTY FAIR BOARD**

*Will Shirley, Chair*

*Kyle Tash, Member*

*Jackie Sutton, Member*

*Jack Bazemore, Member*

*David Schuett, Member*

*Dori McNeil, Member*

*J.M. Peck, Member*

**BOARD OF COUNTY COMMISSIONERS**

*John Jackson*

*Mike McGinley*

*Tom Rice*

**FAIR MANAGEMENT**

*Justin Kellabrew, Facility/Maintenance Director*

*2 S. Pacific, CL #4*

*Dillon, MT 59725*

*(406) 660-7383*

*fairgrounds@beaverheadcountymt.gov*

*Keeley Fitzgerald, Executive Director*

*2 S. Pacific, CL #4*

*Dillon, MT 59725*

*(406) 925-3645*

*keeleyfitz@hotmail.com*

**SUPPORT STAFF & PROGRAMS**

*Jill Anderson, Arena Events Secretary*

*Pete Hansen, Arena Director*

*Jack Bazemore, Beaverhead County Extension Agent*

*Jessica Elkins, Beaverhead County Extension Secretary*

*Caleb Igo, Beaverhead County High School Vo-Ag and FFA Programs*

**EXTENSION SERVICE AND 4-H CONTACT INFORMATION**

*Beaverhead Co. Courthouse*

*2 S. Pacific, Dillon, MT 59725*

*4-H Phone: (406) 683-3785 or (406) 683-6836*

*The 4-H Office will be located in the 4-H Building Wednesday of Fair through Sunday.*

# SCHEDULE OF EVENTS

## \*DENOTES 4-H & FFA EVENTS

### THURSDAY, AUGUST 15

- 5:00 p.m. Deadline to register ALL OPEN CLASS livestock exhibits for the fair  
\*Deadline to register ALL 4-H & FFA livestock exhibits for the fair  
\*4-H Building project entries due \*Livestock photos due  
\*Dog Show—Day and Time TBA

### TUESDAY, AUGUST 20

- 8:00 a.m. \*4-H Working Ranch Horse Show  
1:00 p.m. \*4-H Horsemanship Show

### WEDNESDAY, AUGUST 21

- 9:00 a.m. \*4-H Rodeo (no cutting event)

### TUESDAY, AUGUST 27

- 10 a.m. – 8:00 p.m. Open Class Entries, All Non-Animal Departments

### WEDNESDAY, AUGUST 28 (Buildings will be open after judging until 8 p.m.)

- 8:00 a.m. - 10:00 p.m. Commercial and Food Booth Set-up, Fairgrounds  
9:00 a.m. - 4:00 p.m. Judging of Open Class Entries, All Non-Animal Departments  
Noon - 8:00 p.m. \*4-H Building Open for entries  
3:00 p.m. \*4-H Cat Show and Judging, 4-H Building  
4:00 p.m. - 8:00 p.m. \* Check in of all 4-H, FFA, and Open Class Livestock (not including Poultry & Rabbits)  
6:30 p.m. Beaverhead County Fair Open 4D Barrel Race

### THURSDAY, AUGUST 29 (Buildings Open 10:00 a.m. - 9:00 p.m.)

- 8:00 a.m. \*4-H, FFA & Open Market Swine Judging followed by Swine Showmanship Class  
8:00 a.m. - 8:00 p.m. \*4-H Building Exhibits Entry (NO entries accepted after 8:00 p.m. or on Friday morning)  
1:00 p.m. \*4-H, FFA & Open Market Beef Judging followed by Beef Showmanship Class  
1:00 p.m. - 8:00 p.m. \*4-H & Open Poultry & Rabbits Entry (NO entries accepted after 8:00 p.m. or on Friday morning)  
5:00 p.m. \*4-H, FFA & Open Market Sheep Judging followed by Sheep Showmanship Class  
5:00 p.m. Entries close for Saturday Arena Events  
6:00 p.m. Beaverhead County Fair Team Roping Classic, Harry Andrus Arena  
4:00 p.m. - 6:00 p.m. Music on the Midway: Steve Rose  
7:00 p.m. - 9:00 p.m. Karaoke Contest: Prickly Pear Productions

### FRIDAY, AUGUST 30 (Buildings Open 10:00 a.m. - 9:00 p.m.)

- 7:00 a.m. \*4-H Breeding Sheep, Breeding Beef, and Breeding Hog Interviews  
8:00 a.m. Beaverhead County Fair Team Break-Away Roping (Enter at 7 a.m., Rope at 8 a.m.)  
9:00 a.m. \*Judging of 4-H & Open Poultry & 4-H Poultry Showmanship  
\*Interview Judging of all 4-H Building Exhibits - Building closed during interview judging.  
9:30 a.m. \*4-H and Open Breeding Beef, Sheep, Swine, and Dairy Judging. Show schedule determined by Superintendents.  
10:00 a.m. \*Judging of 4-H Rabbits & 4-H Rabbit Showmanship  
10:00 a.m. Beaverhead County Fair Team Branding, Harry Andrus Arena  
11:00 a.m. Judging of Open Class Rabbits  
11:00 a.m. - 1:00 p.m. Music on the Midway: Steve Rose  
1:00 - 5:00 p.m. Rangeland Plants Exhibit & Identification Contest, Sponsored by Beaverhead Conservation District  
2:00 p.m. \*4-H Round Robin Showmanship Contest, Lundberg Show Ring  
4:00 p.m. \*FFA Livestock Judging Clinic  
5:00 p.m. Beaverhead County Fair Ranch Rodeo, Harry Andrus Arena  
7:00 p.m. \*Silent Auction Bids start, 4-H Building (bidding continues to 7 p.m. Saturday)  
7:00 p.m. - 9:00 p.m. Karaoke Contest: Prickly Pear Productions

**SATURDAY, AUGUST 31 (Buildings Open 10:00 a.m. - 7:00 p.m.)**

8:00 a.m. Saturday Arena Events, Harry Andrus Arena (Entries close at 5 p.m. Thursday)  
11:30 a.m. - 1:30 p.m. \*4-H & FFA Livestock Sale Buyer's Barbeque, Lundberg Show Ring  
12:00 p.m. - 2:00 p.m. Music on the Midway: Michael Armstrong & The Prairie Fire  
1:30 p.m. \*4-H & FFA Market Livestock Sale  
4:00 p.m. - 6:00 p.m. Music on the Midway: Morgan Seymour  
6:00 p.m. - 7:00 p.m. Karaoke Finals: Prickly Pear Productions  
7:00 p.m. \*Silent Auction Bids End, 4-H Building  
7:00 p.m. - 8:00 p.m. \*4-H Silent Auction - pick up articles in 4-H Building  
7:00 p.m. - 10:00 p.m. Rabbit Check Out  
7:30 p.m. Dillon Jaycees PRCA Rodeo, Harry Andrus Arena  
(Tickets available online at [www.dillonjaycees.com](http://www.dillonjaycees.com))  
6:00 p.m. - 8:00 p.m. \*Check-out of all Companion Animals

**SUNDAY, SEPTEMBER 1 (Buildings Open 9:00 a.m. – 12:00 p.m. for entry pick-up/check-out)**

7:30 a.m. PRCA Slack  
8:00 a.m. - 12:00 p.m. 4-H Building Check-out  
9:00 a.m. - 12:00 p.m. Open Exhibits Check-out. PLEASE PICK UP YOUR EXHIBITS. ALL EXHIBITS MUST BE PICKED UP. THANKS FOR YOUR COOPERATION.  
9:00 a.m. \*All 4-H, FFA & Open Livestock pens (hogs, sheep, beef, goats, etc.) need to be cleaned by 9:00 a.m. No Exceptions.  
2:00 p.m. Dillon Jaycees PRCA Rodeo, Harry Andrus Arena  
(Tickets available online at [www.dillonjaycees.com](http://www.dillonjaycees.com))  
8:30 p.m. Dillon Jaycees Concert, Harry Andrus Arena  
Shane Smith and The Saints with opener Colby Acuff  
(Tickets available online at [www.dillonjaycees.com](http://www.dillonjaycees.com))

**MONDAY, SEPTEMBER 2**

10:00 a.m. Dillon Jaycees Labor Day Parade (Entry forms available at [www.dillonjaycees.com](http://www.dillonjaycees.com))

## **IMPORTANT INFORMATION**

**ENTRY DATES:** Entry for all non-animal Open Class Departments will be on Tuesday, August 27 from 10 a.m. to 8 p.m. Check Out for Open Class Exhibits will be on Sunday from 9-12. Please pick up your exhibits.

**JUDGING:** Judging for all non-animal Open Class Departments will take place on Wednesday, August 28.

**OPEN DIVISION:** Youth & Adult Exhibits from Beaverhead, Madison, Jefferson, and Silver Bow Counties.

**4-H AND FFA:** Only Beaverhead County and Melrose 4-H Clubs.

**WEED SEED FREE FORAGE POLICY:** NO HAY other than WEED SEED FREE FORAGE may be brought into the Fairgrounds.

**AUGUST 15:** Deadline for registration of all animals. All open class, 4-H, and FFA animals must be registered at the Beaverhead County Extension Office.

# **Beaverhead Co. Fair & Montana's Biggest Weekend Highlights.....**

## **Arena Events**

Open 4D Barrel Race, Wednesday @ 6:30 p.m.  
Team Roping Classic, Thursday @ 6:00 p.m.  
Team Break-Away Roping, Thursday @ 8:00 a.m.  
Team Branding, Friday @ 10:00 a.m.  
Ranch Rodeo, Friday @ 5:00 p.m.  
Youth SAE Rodeo, Saturday @ 8:00 a.m.

## **Open, 4-H & FFA Livestock Shows**

Market Hog, Thursday @ 8 a.m.  
Market Beef, Thursday @ 1 p.m.  
Market Lamb & Goat, Thursday @ 5 p.m.  
4-H & FFA Livestock Sale, Saturday @ 1:30 p.m.

## **Live Music on the Midway**

Steve Rose, Thursday @ 4-6 p.m.  
Karaoke Contest: Prickly Pear Productions, Thursday @ 7-9 p.m.  
Steve Rose, Friday @ 11-1 p.m.  
Karaoke Contest: Prickly Pear Productions, Friday @ 7-9 p.m.  
Michael Armstrong & The Prairie Fire, Saturday @ Noon-2 p.m.  
Morgan Seymour, Saturday @ 4-6 p.m.  
Karaoke Finals: Prickly Pear Productions, Saturday @ 6-7 p.m.

## **Dillon Jaycees PRCA Rodeo**

Saturday, August 31<sup>st</sup> at 7:30 p.m.  
Sunday, September 1<sup>st</sup> at 2:00 p.m.  
Tickets: [www.dillonjaycees.com](http://www.dillonjaycees.com)

## **Dillon Jaycees Concert**

Sunday, September 1<sup>st</sup> at 8:30 p.m.  
Shane Smith and The Saints with Special Guest Artist Colby Acuff  
Tickets: [www.dillonjaycees.com](http://www.dillonjaycees.com)

# **JOIN THE FUN AT THE FAIR....**

*4-H, FFA & OPEN LIVESTOCK SHOWS EVERY DAY*

*OPEN 4D BARREL RACING WEDNESDAY*

*TEAM ROPING CLASSIC THURSDAY*

*TEAM BRANDING & RANCH RODEO FRIDAY*

*EXCITING OPEN CLASS EXHIBITS ALL WEEK*

*LIVE MUSIC & KARAOKE CONTESTS ON THE MIDWAY THURSDAY, FRIDAY AND SATURDAY*

*TWO BIG DAYS OF DILLON JAYCEES PRCA RODEO ON SATURDAY & SUNDAY*

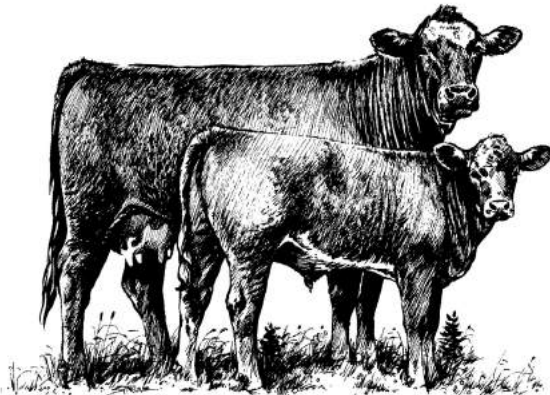
*FOOD VENDORS, BEER GARDENS, EXPOS*

*YOUTH RODEO, KIDS MUTTON BUSTIN' & STEER RIDING ON SATURDAY*

*DILLON JAYCEES OUTDOOR CONCERT ON SUNDAY*

## **2024 BEAVERHEAD COUNTY FAIR**

### **BEAVERHEAD COUNTY FRIENDS OF THE FAIR FOUNDATION**



The Beaverhead County Friends of the Fair Foundation accepts gifts and donations that go directly to the improvement of the fairgrounds and facilities. Donations may be specifically earmarked.

**CONTACT 406-925-3645 FOR MORE INFORMATION**

**THE BEAVERHEAD COUNTY FRIENDS OF THE FAIR FOUNDATION IS A  
501(c)(3) NON-PROFIT ORGANIZATION**

**A SPECIAL THANKS TO OUR  
RIBBON & ROSETTE SPONSORS:**

**AgWest Farm Credit  
Pioneer Federal Savings & Loan  
Rocky Mountain Supply, Inc.  
The Bank of Commerce  
Stockman Bank  
Forrester Livestock, LLC  
George & Fran Schisler  
Andrew & Myrna Johnson  
Jon & Cathy Konen  
Jerry & Tammy Meine  
Jerry & Tammy Meine, In Memory of Mike Rice  
Steve & Cathy Cottom  
Greg & Keeley Fitzgerald  
Beaverhead 7-UP Ranch – Kim Laden  
Ed & Barb Malesich  
Giem Angus  
Bev Rehm  
Chris and Kristi Colleran – Home Ranch MT  
The Matador Cattle Company  
First West Insurance – RJ Fitzgerald, Agent  
Robert & Diane Hutton  
Kristen Walters Swenson  
Bill & Kathy Knox  
Steve & Cathy Cottom  
Randy & Annie Rorabaugh**

**Your continued support of the Beaverhead  
County Fair is appreciated!**



# YOUTH EXHIBITOR AWARD

*In Memory of Joe Womack*

**\$25.00 – Sponsored by Brenda, Dillon, & Jennifer Womack**

## ***Previous Winners***

2023 - Izzy Terrill  
2022 - Izzy Terrill  
2021 - Izzy Terrill  
2020 - Not awarded due to Covid-19  
2019 - Emma Mitchell  
2018 - Sinikka Andrus  
2017 - Sinikka Andrus  
2016 - Sinikka Andrus  
2015 - Sinikka Andrus  
2014 - Faye Holland  
2013 - Augustina Wofford  
2012 - Sarah Madany  
2011 - Augustina Wofford  
2010 - Augustina Wofford  
2009 - Austin Cross  
2008 - Austin Cross  
2007 - Austin Cross  
2006 - Austin Cross  
2005 - Austin Cross  
2004 - Hannah Nichols  
2003 - Jadon Nichols  
2002 - Hannah Nichols  
2001 - Hannah Nichols  
2000 - Matthew Raffety  
1999 - Josh Hart  
1998 - Heidi Strohmeyer  
1997 - Matthew Raffety  
1996 - Michelle Kinzer  
1995 - Heidi Kinzer  
1994 - Heidi Kinzer  
1993 - Heidi Kinzer



**2023 Winner  
Izzy Terrill**



The Youth Exhibitor Award will be awarded to a youth who has entered three departments or more in the Open Division. A youth is defined as being 17 years of age or younger as of the first day of the Fair. The winner will be chosen on the following point system: Blue - 3 points; Red - 2 points; White - 1 point.

---

## MURLIN CONOVER MEMORIAL AWARD

***Champion Adult Exhibitor ~ \$50***

*Murlin Conover was a very talented lady and proud of the Beaverhead County Fair where she was an exhibitor for many, many years. She was well known for her knitting, sewing, and other needlework and also for her Swedish Tea-rings and beautiful flowers. This award is given in memory of Murlin Conover (1912-2004) by loving members of her family.*

**The Adult Exhibitor Award will be awarded to someone over 18 years of age who has entered items in three or more departments in the Open Division. The winner will be chosen on the following point system: Blue – 3 points; Red – 2 points; White - 1 point.**

## **Previous Winners**

2023 - Kim Nye  
2022 - Anna Rhodes  
2021 - Amy Bump  
2020 - Not awarded due to Covid-19  
2019 - Gail Hansen  
2018 - Adele Hansen  
2017 - Kim Nye

2016 - Adele Hansen  
2015 - Jeannette Redfield  
2014 - Adele Hansen  
2013 - Jeannette Redfield  
2012 - Jeannette Redfield  
2011 - Kim Nye  
2010 - Kim Nye

2009 - Kim Nye  
2008 - Jeannette Redfield  
2007 - Jeannette Redfield  
2006 - Jackie Cross  
2005 - Jeannette Redfield  
2004 - Jeannette Redfield

# OPEN DIVISION RULES & REGULATIONS

## ENTRY AND REMOVAL OF EXHIBITS

1. Open Division competition is open to all residents of **Beaverhead, Madison, Jefferson, and Silver Bow Counties with the exception of arena events (see entry form for arena event rules)**. The Open Division Youth sections are open to youth 17 years of age and under. Those 18 as of first day of fair must compete in the adult division.
2. Exhibitors in Open Class may enter up to two exhibits under one lot number unless only one is specified in said Department. Exhibits can be entered in only one lot number.
3. All entries must be made on regular **non-animal** entry blanks, with the exception of all animals, which must be entered by contacting the Beaverhead County Extension Office in Dillon. **All tags used must be for Beaverhead County Fair, not used over from other fairs!**
4. No entry (except in animals and houseplants) is eligible to enter which has previously been exhibited at this Fair.
5. All **non-animal** entry blanks must be properly filled in and submitted to the superintendent when entering the exhibit. **All animal** entry blanks must be properly filled in and sent or brought to the Extension Office, 2 South Pacific.. Be sure to fill in correct **mailing address**, as checks will be **mailed by October 15**.  
**No entries will be allowed after the times stated in the schedule of events.**
6. Exhibits, except livestock, shall be the property of the exhibitors & shall be of his own production. The management reserves the right to require a sworn affidavit as to the ownership, producer, and place of any exhibit.
7. Exhibits can be picked up on Sunday after Rodeo and before 8:00 pm, but must be checked out with the Superintendent. Buildings locked at 8:00 pm. Exhibits not picked up will be brought to the Office by the Superintendent. **PLEASE CHECK OUT YOUR EXHIBITS BY SUNDAY**. Exhibits not picked up will be disposed of or donated to charity. **The fair is not responsible for exhibits not picked up**. Any removed without permission will not receive premium money. All entries in Dept. K (Needlework - Sewing) and Dept. L (Drawing & Painting, Photography, Hobbies & Crafts) must be signed out. Vegetables and food exhibits not claimed will be disposed of to a local charity at the discretion of the management. Exhibits will be disqualified if tags and blanks are not completed.
8. Exhibits erroneously entered may be transferred at the discretion of the superintendent of the department in which they properly belong, if done prior to the start of judging in the class in which they are eligible. **Exhibits not classified in the Premium List may be given a Lot # by the Department Superintendent.**
9. If you cannot bring your exhibit in person, address all exhibits to the Beaverhead County Fair Office, 2 S. Pacific, #4, Dillon, MT 59725, or take to the Fair Office, (Make sure entry blanks are enclosed with exhibit entries). All exhibits must be well packed or crated and shipped with all charges prepaid. The Fair, or any of its agents or officers, will not be responsible for the loss, damage, or injury of any article, bird, or animal exhibited at the Fair, either during the Fair or while it is en route to or from the Fair, nor will the Fair be held responsible for the safe return of any exhibits to its owner, although due caution will be exercised to prevent loss or damage. All exhibitors will be held responsible for the return of exhibits.
10. Exhibits are open to Amateur Exhibits only.

## JUDGING AND PREMIUMS

1. In all Open Division lots, ribbons may be awarded as follows: 1<sup>st</sup> place, Blue; 2<sup>nd</sup> place, Red; and 3<sup>rd</sup> place, White. Only one blue, one red and one white may be awarded in each lot. If no exhibit merits a blue, red or white ribbon, none has to be awarded. Absence of competition will not be accepted as justification for awarding a high class prize to an animal or article of medium or inferior quality. **The judges in Department K reserve the right to disqualify any articles of clothing which are soiled or not washed before exhibiting.**
2. **Purple Ribbons** will be awarded only in instances where the quality of the exhibit is so outstanding as to merit special consideration, and a blue ribbon has already been awarded. **Blue ribbons will not be removed and awarded to another exhibit.**
3. **Rosettes** are awarded only to blue &/or purple winners upon completion of that given category. (i.e., Man's shirt)
4. Any exhibit failing to meet the requirements of number will not be judged or allowed to compete for awards.
5. Judges are instructed to place market animals on the basis of realistic market conditions.
6. Exhibitors must be able to show livestock to qualify for ribbons and awards.
7. **ALL JUDGES DECISIONS ARE FINAL. ALL EXHIBITS MUST BE JUDGED!**
8. All premiums will be paid by mail by October 15. Premiums will be paid according to the official awards entered in the judge's book and not the premium tags or ribbons. Purple ribbons receive no money nor do yellow ribbons, which are special awards only for honorable mention.
9. NO CHECKS from a current Fair will be honored after February 1 of the next year.
10. Premiums are paid as follows: Purple Ribbons, \$4.00; Blue Ribbons, \$3.00; Red Ribbons, \$2.00; White Ribbons, \$1.00. **Livestock** (sheep, swine, beef) premiums are paid as follows: Purple Ribbons, \$15.00; Blue Ribbons, \$10.00; Red Ribbons, \$5.00; White Ribbons, \$3.00.

## GENERAL

1. Management of the Beaverhead County Fair reserves the final and absolute right to interpret all rules & regulations, to arbitrarily settle and determine all matters, questions, and differences in regard thereto, connected or incidental to the Fair.
2. Rights are reserved by the Board to formulate and announce new rules to meet emergencies that may arise during the Fair and to adjudicate all matters arising from the Fair.
3. The Fair Management reserves the right to exclude from the fairgrounds any person or persons whom it may deem undesirable, or who shall violate any of the rules laid down by the management, or who shall otherwise become offensive.
4. Every animal and article upon the grounds shall be under the control of the Fair Board, but while every precaution will be taken for the safekeeping of the same, neither the Fair Board, nor any of its officers nor agents will be responsible in any case for any loss or accident which may occur.
5. The management reserves the right to prescribe dimensions and regulate the position of all signs, and suggest the arrangement of articles on exhibition so far as the same may be necessary to secure harmony and attractive appearances.
6. The management reserves the right to regulate the parking of automobiles or other vehicles or conveyances within the fairgrounds and to direct where they shall be driven therein.
7. The management reserves the right to amend or add to these rules, as they in their judgment may deem advisable. In the event of conflict between general and special rules, the latter shall govern.
8. All Fair rules and regulations are drawn up by the Beaverhead County Fair Board.
9. No advertising is allowed by stating a price, where product can be purchased, or by who made or sold on any exhibit. Exhibit will be disqualified if this rule is not followed. This rule applies also after judging is completed. Any exhibit/exhibits on display for selling or advertising can be exhibited under, Booths and Commercial Space.

## SUPERINTENDENTS

1. Each superintendent shall have charge of the department assigned to him/her and be responsible for securing their own volunteer help. Each superintendent is charged with caring for and receiving the book of his department with the awards in each duly and properly entered therein, as it is upon this record only that premiums can be paid. Each page must be signed by the superintendent or judge immediately after completion of awards for the class. All superintendents shall furnish office with Special Awards sheet upon completion of judging. They shall file a report of their department, with recommendations, with the Fair Secretary at the close of the Fair.

## AGRICULTURAL EXHIBITS

1. Ownership: All exhibits must be owned by and entered in the name of the exhibitor. No exhibitor may receive more than two awards in any one lot.
2. Each livestock, rabbit, or poultry exhibitor should bring enough feed for their animal for the duration of the fair. Bedding for the entire Fair will be furnished by the Fair Management. Exhibitors should also bring their own troughs, pails or any other necessary equipment.
3. Identification: Identification signs provided by the Fair and filled out by the exhibitor, must be easily seen and in place before judging.
4. Beef, sheep, and swine stalls will be reserved and assigned on a first come, first served basis at the time of preregistration. Please check with the superintendent for your assigned location before unloading your livestock.
5. WILD ANIMALS - If an exhibitor is unable to handle his/her beef, that beef has to go home for reasons of safety.
6. **NOTE: NO HAY** other than **WEED SEED FREE FORAGE** may be brought into the Fairgrounds.

## BOOTHS & COMMERCIAL SPACE

1. Indoor booths in the Commercial Buildings and assigned outdoor space are available on a first come, first pay basis for commercial use and display. Fees must be received by the Fair Secretary before a booth can be reserved.
2. Limited outdoor food concession spaces are available. A rental fee is required and must be received by the Fair Management before it can be reserved. A reference from another Fair must be received along with the fee.
3. All booths must be in place anytime on Wednesday of Fair week and ready to open on Thursday morning. Your area must be cleaned up before leaving.
4. All booths must be kept clean, sanitary, and orderly.
5. NO TRUCKS, ETC. (for restocking, etc. purposes) will be allowed on grounds after 9:00 a.m. on Thursday, Friday, Saturday, and Sunday.

# **OPEN DIVISION**

## **DEPARTMENT A - BEEF**

### **SPECIAL AWARDS AND SPONSORS:**

**Grand Champion Female of Show** - \$50.00 - Dillon Livestock Auction

**Grand Champion Male of Show** - \$50.00 - Circle L Angus

**Reserve Champion Female of Show** - \$35.00 - Split Diamond Ranch, Steve & Hans Buckner

**Reserve Champion Male of Show** - \$35.00 - Bvhd. Co. Fair & Mike Coleman Construction

**Champion Female Hereford** - \$25.00 - Jack Hirschy Livestock, Inc.

**Champion Male Hereford** - \$25.00 - Beaverhead County Fair

**Champion Female Black Angus** - \$25.00 - Forrester Livestock Ranch

**Champion Male Angus** - \$25.00 - Giem Angus, Twin Bridges

**Champion Female Crossbred** - \$25.00 - Hagenbarth Livestock

**Champion Female Exotic** - \$25.00 - Beaverhead County Cattlewomen

**Champion Male Exotic** - \$25.00 - Turner Ranch Properties

### **BEEF BREEDING STOCK**

**Superintendent: Ryan Hughes (406) 581-1873**

#### **BEEF BREEDING STOCK**

**Females:** Hereford Angus Shorthorn Crossbred Exotic

- 100 Spring Heifer (calved after March 4, 2024)
- 101 Jr. Heifer (calved January 1 - February 28, 2024)
- 102 Winter Heifer (calved November 1 - December 31, 2023)
- 103 Sr. Heifer (calved September 1 - October 31, 2023)
- 104 Summer Yearling (calved July 1 - August 31, 2023)
- 105 Late Spring Yearling (calved May 1 - June 30, 2023)
- 106 Early Spring Yearling (calved March 1 - April 30, 2023)
- 107 Jr. Yearling (calved January 1 - February 28, 2023)
- 108 Sr. Yearling (calved September 1 - December 31, 2022)
- 109 Two Year Old (calved January 1 - June 30, 2022)
- 110 Mature Cow

**Bulls:** Hereford Angus Shorthorn Crossbred Exotic

- 120 Spring Bull (calved after March 1, 2024)
- 121 Jr. Bull (calved January 1 - February 28, 2024)
- 122 Winter Bull (calved November 1 - December 31, 2023)
- 123 Sr. Bull (calved September 1 - October 31, 2023)
- 124 Summer Yearling (calved July 1 - August 31, 2023)
- 125 Late Spring Yearling (calved May 1 - June 30, 2023)
- 126 Early Spring Yearling (calved March 1 - April 30, 2023)
- 127 Jr. Yearling (calved January 1 - February 28, 2023)
- 128 Sr. Yearling (calved July 1 - December 31, 2022)
- 129 Two Year Old (calved January 1 - June 30, 2022)
- 130 Mature Bull

#### **OTHER BREEDING CLASSES**

- |     |   |     |  |
|-----|---|-----|--|
| 200 | Group of two bulls - bred and owned by breeder                    | 206 | Pair of Calves - either sex or mixed sex |
| 201 | Super Cow Class - two offspring of either or same sex             | 207 | Two Year Old Cow & Calf                  |
| 202 | Get-of-Sire - 4 animals, by one sire, any age, either or both sex | 208 | Mature Cow & Calf                        |
| 203 | Best Six Head - owned or co-owned by exhibitor                    | 209 | Feeder Calf (200-400 pounds)             |
| 204 | Pair of Yearling - either sex or mixed sex                        | 210 | Feeder Calf (401-675 pounds)             |
| 205 | Baby Calves   |     |  |

# MARKET BEEF

Superintendent: Jacob Smith (406) 835-3451

## SPECIAL AWARDS AND SPONSORS:

**1st Place** - \$200.00 - Schuett Farms

**2nd Place** - \$100.00 - Schuett Farms

**3rd Place** - \$50.00 - Schuett Farms

**4th Place** - \$25.00 - Schuett Farms

20 Market Beef - any breed or combination

## DEPARTMENT B - DAIRY CATTLE & DAIRY GOATS

Superintendent: Ryan Hughes (406) 581-1873

## SPECIAL AWARDS AND SPONSORS:

**Champion Dairy Exhibit** - \$10.00 - Beaverhead County Fair

All rules the same as Department A - Beef. Animals will be judged on size for age, dairy type, vigor and condition, and milk-producing characteristics.

### **Dairy Cattle:**

- |   |  |   |  |
|---|--|---|--|
| 1 | Heifer, under 2 years                                    | 5 | Bull, under 1 year                       |
| 2 | Heifer, over 2 years (in calf or milking)                | 6 | Bull, over 2 years                       |
| 3 | Cow, milking, 3 years or older                           | 7 | Mother & 2 offspring, any breed or cross |
| 4 | Cow, dry (showing signs of freshening, 3 years or older) |   |  |

### **Dairy Goat:**

- |    |                         |    |  |
|----|-------------------------|----|--|
| 20 | Doeling, under 1 year   | 24 | Mother & offspring, any breed or cross                     |
| 21 | Doe, milking, 1-2 years | 25 | Get of Sire (three animals same breed, sire must be named) |
| 22 | Doe, dry, 1-2 years     | 26 | Other Dairy Goat   |
| 23 | Doe, over 2 years       |    |  |



# DEPARTMENT C - SHEEP & GOATS

Superintendent: Liz Jones (406) 832-3219



## SPECIAL AWARDS & SPONSORS:

**Champion Ram** - \$10.00 - Pioneer Federal Savings & Loan

**Reserve Champion Ram** - \$10.00 - Nancy Johnson

**Champion Ewe** - \$10.00 - Pioneer Federal Savings & Loan

**Reserve Champion Ewe** - \$10.00 - Nancy Johnson

## BREEDING SHEEP

All lambs must be born on or after the first of this year to be eligible.

	Hampshire	Columbia	Rambouillet	Targhee	Suffolk	Texel	Other
	<u>Lot</u>	<u>Lot</u>	<u>Lot</u>	<u>Lot</u>	<u>Lot</u>	<u>Lot</u>	<u>Lot</u>
Ewe Lamb	1	7	13	19	25	31	37
Ram Lamb	2	8	14	20	26	32	38
Yearling Ewe Class	3	9	15	21	27	33	39
Mature Ewe Class, 2 & over	4	10	16	22	28	34	40
Ram 1 year, under 2 years	5	11	17	23	29	35	41
Ram, 2 years or over	6	12	18	24	30	36	42

50 Ewes with Lambs

51 Pen of 3

52 Get-of-Sire, Pen of 3

53 Get-of-Sire (includes Ram & two of his lambs)

54 Family Class (includes Ram, Ewe & their lamb(s))

## MARKET SHEEP

60 Open Market Class

70 Locally Grown

## MEAT GOATS

Meat goats may be shown with or without horns. Meat goats are usually shown with horns, but goats without will not be discriminated against. Meat goats may be does or wethers, but no bucks will be shown in the meat goat class.

90 Female, under 1 year

91 Female, over 1 year

92 Male, under 1 year

93 Any other goat

# DEPARTMENT D - SWINE

Superintendents: Yvonne Jones (406) 832-3219 & Jeff Ford (406) 925-2595

## SPECIAL AWARDS & SPONSORS:

**Champion Boar or Sow** - \$10.00 - Randy & Helen Tommerup

## BREEDING SWINE

50 Sow under 1 year

51 Boar, under 1 year

52 Sow over 1 year

53 Boar, over 1 year

54 Litter, 4 or more

## MARKET SWINE

30 Open Market Class



# DEPARTMENT E - WOOL & FIBERS SHOW

Superintendents: Celine Beaucamp-Stout (406) 660-7113 or Nikky Oswald (541) 699-8596

Entry: Tuesday, August 27 from 10 a.m. to 8 p.m.

Judging: Wednesday, August 28

## **SPECIAL AWARDS & SPONSORS:**

**Champion Ram Fleece** - \$10.00, Adult - Beaverhead County Fair

**Champion Ewe Fleece** - \$10.00, Adult - Beaverhead County Fair

**Champion Ram Fleece** - \$10.00, Youth - Beaverhead County Fair

**Champion Ewe Fleece** - \$10.00, Youth - Beaverhead County Fair

**Champion Specialty Fleece** - \$10.00, Adult - Beaverhead County Fair

**Champion Specialty Fleece** - \$10.00, Youth - Beaverhead County Fair

## **Wool and mohair instructions:**

The fleece sample must be well-cleaned: picked clean of debris but unwashed to show the crimp. The sample must be placed in a transparent gallon Ziploc bag, not too packed to allow the judge to easily inspect the fibers (Do not keep sheep wool bagged for a long period of time to avoid stickiness from the lanolin). In order to compete for prizes, each fleece must (A) have been shorn in the current year and (B) represent not more than 12 months' growth, except for yearling fleeces. Mixed-breed wool will be entered based on grade and color.

**Criteria for judging: Clean wool content, fineness, strength, purity, character and color, and length of staple for the grade.**

## **Other specialty fibers instructions:**

The fleece sample must be well-cleaned: picked clean of debris but unwashed to show the natural structure of the fibers. The sample must be placed in a transparent gallon Ziploc bag, not too packed, to allow the judge to easily inspect the fibers.

**Criteria for judging: Yield quality (cleanliness), firmness and uniformity, point length, character (waviness or locks if applicable), purity, softness, luster (shininess).**

## **NATURAL COLORED SHEEP WOOL:**

- 1 Fine: Spinning Count 64s to 80s (17-22 microns) (e.g. Cormo, Merino, Rambouillet, Targhee)
- 2 Medium: Spinning Count 50s to 62s (22-31 microns) (e.g. Cheviot, Columbia, Corriedale, Montadale, Tunis)
- 3 Long: Spinning Count 36s to 48s (31-40 microns) (e.g. Border Leicester, Coopworth, Cotswold, Lincoln, Romney, Wensleydale)
- 4 Double-Coated (e.g. Icelandic, Karakul, Navajo-Churro, Scottish Blackface, Shetland)

## **WHITE FLEECES SHEEP WOOL:**

- 5 Fine: Spinning Count 64s to 80s (17-22 microns) (e.g. Cormo, Merino, Rambouillet, Targhee)
- 6 Medium: Spinning Count 50s to 62s (22-31 microns) (e.g. Cheviot, Columbia, Corriedale, Montadale, Tunis)
- 7 Long: Spinning Count 36s to 48s (31-40 microns) (e.g. Border Leicester, Coopworth, Cotswold, Lincoln, Romney, Wensleydale)
- 8 Double-Coated (e.g. Icelandic, Karakul, Navajo-Churro, Scottish Blackface, Shetland)

## **SPECIALTY FIBERS:**

- 9 Alpaca
- 10 Llama
- 11 Mohair from goat (Angora)
- 12 Angora rabbit wool
- 13 Other



# DEPARTMENT G - POULTRY AND RABBITS

## GENERAL RULES

**NOTE: If an animal has been entered in 4-H, the same animal cannot be entered in Open.**

1. Each exhibit must be the property of the person showing it.
2. Please specify breed on the entry form.
3. Chicken - Exhibitors are allowed (2) Purebred entries per variety. Any number of varieties can be entered.
4. Eggs - Must be sorted as to size & marked accordingly. Only one size in each carton & only one size (your choice) will be accepted in each lot.
5. The Judge or Superintendent may change exhibit to a different class according to age or development.
6. Pregnant does or does with bunnies under six weeks of age will not be shown or displayed. No bunnies under six weeks
7. It is suggested that your rabbit be tattooed in the left ear to discourage theft and help the judge identify animals.
8. Exhibitors should have pens, cages, etc., clean and animals presentable for public display by 9 A.M. each morning.
9. All poultry must be clean and free from parasites.
10. If animal/animals are found to be contaminated or diseased or in poor condition when checked in or at time of judging, they will be disqualified, and owner must remove animal(s) from premises.
11. No Entry may be removed from cage or handled by an unauthorized person, except by Special Permission.
12. Exhibitors must secure cage doors with wire, snaps, or locks. If using locks, one key must be left with Superintendent.
13. Posters and Educational material and for sale signs will be allowed as judge doesn't see the cages. Also, tags can be left open for the enjoyment of viewers.
14. Each exhibitor must bring enough feed to last the duration of the Fair. Exhibitors should also bring their own troughs, pails and other necessary equipment, properly identified.
15. It is recommended that each exhibitor freeze 3 jugs of water for each cage of rabbit(s) he/she exhibits. If it is hot, place a jug of ice in with the animal(s). Change daily and re-freeze. It takes over 24 hours to re-freeze jug - that is why 3 are needed. The Fair will not have facilities for either re-freezing the jugs or keeping them frozen. This is the responsibility of the exhibitor only.
16. Young and mature birds, pairs and trios will be judged separately.
17. Any individual bird may not be entered in more than one lot.
18. All birds entered in any lot will be considered for awards.
19. More classes will be added if necessary to cover entries.
20. All Cross-Bred Birds can enter any number of entries but are limited to red and white ribbons. One red ribbon bird will be awarded Top Barney.
21. Only Blue Ribbon birds are eligible for Champion or Special Awards except (1) Barney Crossbred will be awarded. Barney is chosen on condition, coloring, size, or any characteristic, which makes it unique.
22. Any purebred is a bird recognized by the American Poultry Association.

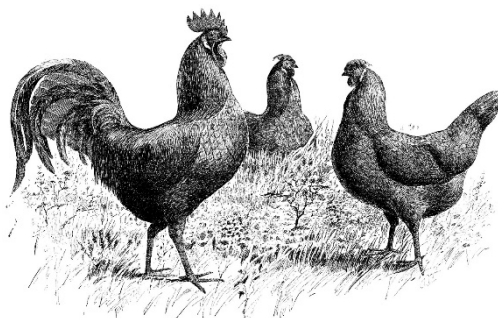


# POULTRY

Superintendent: Contact Extension Office with Questions & Entry @ (406) 683-3785

## SPECIAL AWARDS & SPONSORS:

**Champion Pullet** - \$10.00 - Helen Brown, in memory of Buster Brown  
**Champion Cockerel** - \$10.00 - Gracie's New & Used  
**Champion Hen** - \$10.00 - Beaverhead County Fair  
**Champion Rooster** - \$10.00 - Vigilante Electric  
**Champion Pair of Chickens** - \$10.00 - Beaverhead County Fair  
**Champion Trio** - \$10.00 - Gracie's New & Used  
**Champion Mother & Baby/Babies** - \$10.00 - Beaverhead County Fair  
**Top Barney** - \$10.00 - Beaverhead County Fair  
**Champion Bantam** - \$10.00 - Gracie's New & Used  
**Champion Eggs** - \$10.00 - Beaverhead County Fair  
**Champion Turkey** - \$10.00 - Beaverhead County Fair  
**Champion Waterfowl** - \$10.00 - Beaverhead County Fair  
**Champion Guineafowl** - \$10.00 - Beaverhead County Fair  
**Champion Peafowl** - \$10.00 - Beaverhead County Fair  
**Champion Gamefowl** - \$10.00 - Beaverhead County Fair



**Pullet:** Female fowl less than One-year-old  
**Cockerel:** Male fowl less than One-year-old

**Hen:** Female fowl more than one year old.  
**Rooster:** Male fowl more than one year old.

<b>TURKEYS (meat)</b>	<b>TURKEYS (breeding)</b>	<b>DUCKS</b>	<b>GEESE</b>	<b>PEA FOWL</b>
1 Hen	5 Hen	9 Hen	13 Goose	16 Hen
2 Tom	6 Tom	10 Drake	14 Gander	17 Cock
3 Pair	7 Pair	11 Pair	15 Pair	18 Pair
4 Trio	8 Trio	12 Trio		
<b>GUINEAS</b>	<b>PIGEONS</b>	<b>PARAKEETS</b>	<b>ANY OTHER VARIETY</b>	
19 Hen	23 Single	26 Single	28 Male	
20 Cock	24 Pair	27 Pair	29 Female	
21 Pair	25 Trio		30 Pair	
22 Trio			31 Trio	

## CHICKENS

	<u>ROOSTER</u>	<u>COCKEREL</u>	<u>HEN</u>	<u>PULLET</u>
American Standard Breed	40	48	56	64
Asiatic Standard Breeds	41	49	57	65
English Standard Breeds	42	50	58	66
Continental Standard Breeds	43	51	59	67
All Other Standard Breeds	44	52	60	68
Any Hybrid Meat Type Breed	45	53	61	69
Barney Class	46	54	62	70
Other ( <i>please label breed on entry</i> )	47	55	63	71

## BANTY

75 Game Bantam	78 Clean Legged Rose Comb Bantam
76 Feather Legged Bantam	79 Clean Legged Other Comb Bantam
77 Clean Legged Single Comb Bantam	80 Other Bantam ( <i>please label breed on entry</i> )

## PAIRS AND TRIOS

81 Pair Chickens (over 1 year of age) (i.e., Rooster & Hen)	84 Trio (under 1 year of age)
82 Pair Chickens (under 1 year of age) (i.e., Cockerel & Pullet)	85 Breeding Trio's (i.e., 2 Hens & Rooster)
83 Trio (over 1 year of age)	

## EGGS

86 ½ dozen white Chicken Eggs	89 ½ dozen Bantam Eggs
87 ½ dozen colored Chicken Eggs	90 ½ dozen white Duck Eggs
88 ½ dozen brown Chicken Eggs	91 ½ dozen colored

# RABBITS

Superintendent: Contact Extension Office with Questions & Entry @ (406) 683-3785

## SPECIAL AWARDS & SPONSORS:

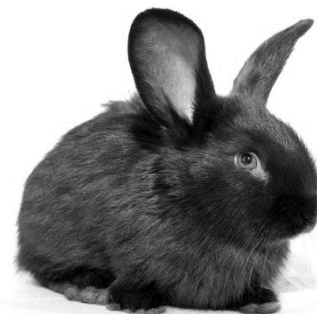
**Champion Purebred** - \$15.00 - Kristen Walters Swenson  
**Reserve Champion Purebred** - \$10.00 - Gracie's New & Used  
**Champion Crossbred** - \$10.00 - Vigilante Electric Co-op, Inc.  
**Reserve Champion Crossbred** - \$10.00 - Gracie's New & Used  
**Best of Show** - \$15.00 - Vigilante Electric Co-op, Inc.

Breed Names	Jr. Buck	Int. Buck	Sr. Buck	Jr. Doe	Int. Doe	Sr. Doe
Californian	10	11	12	13	14	15
Cinnamon	20	21	22	23	24	25
New Zealand	30	31	32	33	34	35
Satins	40	41	42	43	44	45
Standard Rex	50	51	52	53	54	55
Other Breeds (over 9 lbs)	60	61	62	63	64	65
Mini Lop	70		72	73		75
Mini Rex	80		82	83		85
Holland Lop	90		92	93		95
Dutch	100		102	103		105
Other Breeds (4-7 lbs)	110		112	113		115
Netherlands Dwarfs	120		122	123		125
Other Breeds (under 4 lbs)	130		132	133		135
Crossbred Rabbits (over 7 lbs)	140		142	143		145
Crossbred Rabbits (under 7 lbs)	150		152	153		155

Doe & Litter	156	Babies must be 5 to 8 weeks of age.
Meat Pen (3)	157	5# maximum and not over 10 weeks of age. Must be same breed and variety, but need not be of the same litter.

FUR	Lot #	These classes only look at the wool or fur on the rabbit.  The rabbit is judged in one of the above classes for body type, etc.
Normal	158	
Rex	159	
Satin	160	
Wool	161	

Rabbits are broken into four class or six class breeds. As a general rule animals with a mature weight over 9 pounds are shown as a six-class animal while animals with a mature weight under 9 pounds are shown as a four-class animal. In the six class animal designation juniors are up to 6 months of age; intermediates are 6 to 9 months of age; seniors are over 9 months of age. In a four-class rabbit any rabbit up to 6 months is considered a junior, while any animal over 6 months is a senior.



# DEPARTMENT I AGRONOMY - GRAINS & HAY

Superintendents: Celine Beaucamp-Stout (406) 660-7113 or Nikky Oswald (541) 699-8596

Entry: Tuesday, August 27 from 10 a.m. to 8 p.m.  
Judging: Wednesday, August 28

## **SPECIAL AWARDS & SPONSORS:**

**Champion Grain and/or Hay Exhibit** - \$10.00 - Intermountain Irrigation, Inc.

All entries must be current year's crops unless otherwise designated. Exhibits will not be eligible for competition unless amount specified is exhibited. All products in this class must be field grown and none can be hothouse grown.

## **SHEAF GRAIN**

Sheaves must be at least 3 inches and not more than 5 inches in diameter just below the head, tied in 3 places. Previous year's crops may be shown if not shown before.

- 1 Spring Wheat, hard variety
- 2 Spring Wheat, soft variety
- 3 Oats, any variety
- 4 Winter Wheat, any variety
- 5 Barley, 2-4 row variety
- 6 Barley, 4-6 row variety

## **THRESHED GRAIN**

One gallon must be shown. Previous year's crops may be shown if not shown before.

- 10 Spring Wheat, hard variety
- 11 Spring Wheat, soft variety
- 12 Oats, any variety
- 13 Winter Wheat, any variety
- 14 Barley, 2-4 row variety
- 15 Barley, 4-6 row variety

## **HAY**

Exhibits must be sheaves of cured hay, 3 to 5 inches in diameter and tied in 3 places. Any entry of baled hay must consist of a clear gallon-ziploc bag.

- 20 Sheaf of Hay
- 21 Baled alfalfa
- 22 Baled mixed hay, grasses and legumes
- 23 Baled hay - native grasses
- 24 Baled hay - varieties



# DEPARTMENT J - HORTICULTURE - FRUITS & VEGETABLES

Superintendents: Celine Beaucamp-Stout (406) 660-7113 or Nikky Oswald (541) 699-8596

Entry: Tuesday, August 27 from 10 a.m. to 8 p.m.

Judging: Wednesday, August 28

## SPECIAL AWARDS & SPONSORS:

### ADULT

Grand Champion Vegetable - \$10.00 - Be the Change 406 Coalition  
Reserve Champion Vegetable - \$5.00 - Turner Ranch Properties  
Grand Champion Fruit - \$10.00 - Vigilante Electric Co-op Inc.  
Reserve Champion Fruit - \$5.00 - Turner Ranch Properties  
Grand Champion Vegetable Display - \$10.00 - Rocky Mountain Supply, Inc.  
Grand Champion Decorated Display - \$10.00 - Dennis & Jerry Jo Rehse  
Grand Champion Zucchini Display - \$10.00 - Vigilante Electric Co-op Inc.  
Superintendent's Award - \$10.00 - Rocky Mountain ATM's



### YOUTH

Grand Champion Vegetable - \$10.00 - Beaverhead Co. Fair  
Reserve Champion Vegetable - \$5.00 - Richard & Dorothy Wheeler  
Grand Champion Fruit - \$10.00 - State Farm Insurance  
Reserve Champion Fruit - \$5.00 - Richard & Dorothy Wheeler  
Grand Champion Decorated Display - \$10.00 - Richard & Dorothy Wheeler  
Reserve Champion Decorated Display - \$5.00 - Richard & Dorothy Wheeler  
Grand Champion Vegetable Display - \$10.00 - Be the Change 406 Coalition  
Reserve Champion Vegetable Display - \$5.00 - Be the Change 406 Coalition  
Superintendent's Award - \$10.00 - Rocky Mountain ATM's

**NOTE: ONLY 1 ENTRY PER PERSON PER LOT NUMBER!**

### AGE GROUPINGS

Adult, 18 & over - use white entry form

Youth, 2-17 yrs old - use pink entry form

Please put "Y" and your age in the right corner of your entry tags (e.g. Y8)

## GARDEN VEGETABLES – Rules & Preparation

**GENERAL RULES:** All exhibits MUST be grown by the exhibitor and MUST NOT have been a purchased product (youth: the child exhibitor 2 years old minimum of age, must have helped plant, care for, and harvest the produce). The product MUST be entered for the 1<sup>st</sup> time in any fair.

\* Please read the "Open division rules & regulations" for more details.

**NOTE: ONLY 1 ENTRY PER PERSON PER LOT NUMBER!**

**TAGS and ENTRY FORMS:** ALL TAGS USED MUST BE FOR BEAVERHEAD COUNTY FAIR. The tag should be taped on the outside of the plastic bag, on a flat corner, so it doesn't hide produce(s). For exhibits without a plastic bag: FOR GARLIC, ONIONS, LEEKS, ZUCCHINI, HERBS, and ANY EXHIBIT TOO LARGE, fasten the tag with string or tape to the produce itself or the container (herbs). If you know the specific name of your entry, write it on the tag.

### **JUDGING CRITERIA:**

Judging will be done according to presentation, condition, size, and uniformity. Different varieties (incl. colors) of the same lot will be judged together unless the number of entries within one lot makes judging too complicated. In that case, the "other" category may be used to divide produces at the superintendents' discretion.

**1/ PRESENTATION:** ALL EXHIBITS must be shown on a white paper plate, without any decorations (incl. entries for "largest by weight" and "longest/largest"). ALL EXHIBITS and their plate need to be inserted in a gallon-size Ziploc bag (logo side down) or a clear plastic bag fastened with a wire tie, EXCEPT FOR GARLIC, ONIONS, LEEKS, ZUCCHINI, HERBS, and ANY EXHIBIT TOO LARGE for a plastic bag. The exhibitor must provide paper plates and plastic bags. Herbs may be placed in a container with water to prevent wilting. The container can be either plastic or glass and must be heavy enough to maintain the weight of the herbs near a vertical position. **2/CONDITION:** The maturity of vegetables and fruits should be ADEQUATE for

the specific produce (neither over-mature nor under-mature, aka “ready-to-eat”). Produce must be clean: free of dirt, insects, and damage (mechanical, dirt, moisture, sunburn, disease, insects, or other). Water is not always recommended to clean; refer to each produce requirements. **3/SIZE:** Vegetables and fruits should be the best marketable or usable size. It should be neither the largest nor the smallest unless oversize is the specific goal (for example, for “largest zucchini”). **4/ UNIFORMITY:** It is an essential judging criterion. The exhibit should be uniform in size, mainly when containing more than one produce.

## **VEGETABLE PREPARATION & ENTRY**

**Please review each entry requirements carefully:**

**ASPARAGUS.** 1 bunch of 5 spears. The spears should be round, straight, and at least ½ inch in diameter, measured 1 inch from the trimmed butts. The length should be 7-9 inches after trimming. There should not be more than 1 inch of white showing at the bottom and no purple overcast. Spears should be brittle and easily punctured. The tips should be tight with no opened bracts (“leaves”). The bunch should be neat and held together with cord or rubber bands in two places near the butts and just below the tips.

- 1 Asparagus (1 bunch of 5)

**ARTICHOKE.** 1 head. The flower bud should be about 9 inches and compact – the bracts (scales) should not be opened and not split or frayed. Purple color should be very limited (a sign of cold weather). The stem should be 2 ½ to 3 inches neatly trimmed.

- 2 Artichoke (1)

**BEANS.** 6 beans. Snap: Beans should be whole with about 1/4” of the stem, without spent blossoms. Pods should be firm and brittle with small seeds. Pods should have the same degree of curvature and be arranged with the stems and curves facing the same way. Lima unshelled: Select full-size, dark green pods that are still tender and fresh. The beans inside should be well-developed. Do not use pods that have begun to yellow. Arrange neatly as described for snap beans. Dry: Beans are harvested, shelled, and dried. **DO NOT BAG** dry beans.

- 3 Beans, snap, green; bush and pole alike (6)
- 4 Beans, snap, other colors including violet, red, yellow, or variegated; bush and pole alike (6)
- 5 Beans, unshelled, lima (6)
- 6 Beans, shelled, dry (6)
- 7 Beans, other (6)

**BEETS.** 3 beets. Roots should be well-colored, smooth, tender, and well-shaped according to variety. Select roots 1 ½ to 2 ½ inches in diameter. Allow most of the taproot to remain. Trim tops 1 to 1 ½ inches. Slice one of the beets in half to show the flesh.

- 8 Beets, Red (3)
- 9 Beets, Chioggia (3)
- 10 Beets, Golden (3)
- 11 Beets, Others (3)

**BROCCOLI.** 1 head or a bunch of 5. Select heads that are fresh, firm, tender, tight, and crisp. Color should be true to variety. The minimum diameter of the head should be at least 3 inches in diameter, with the stem neatly cut to create a 7-inch stem for the head and 5 inches long for side shoots or bunching varieties. Remove all leaves below the head. Florets should be tight (not opened) and with a perfectly matured color, true to variety (no yellowing).

- 12 Broccoli, head (1)
- 13 Broccoli, Romanesco (1)
- 14 Broccoli, branching varieties (1 bunch of 5)
- 15 Broccoli, others

**BRUSSEL SPROUTS.** 6 sprouts. Sprouts should be neatly trimmed from the stalk as to leave about ¼ inch stem. The buds should not be less than 1 inch in diameter. They should be round, compact, and firm. The buds should be medium green and contain no loose outer leaves.

- 16 Brussels sprouts, catskill (6)
- 17 Brussels sprouts, others (6)

**CABBAGE.** 1 head. Type is essential. It is best to exhibit heads that are medium size, 2 to 5 lbs. Heads should be firm and heavy for their size, not withered or soft. The midribs should not be large, as that would indicate coarseness. Leaves should not be peeled too closely. Stems should be neatly cut about ½ inches below the lowest leaf. Do not peel to shiny skin. Cabbage should not split before judging. Savoy variety should be about 8-10 inches in diameter and typically not as tight as common cabbage. Do not wash cabbage, but carefully brush off as much soil as possible.

- 18 Cabbage, round (1)
- 19 Cabbage, flat (1)
- 20 Cabbage, red (1)
- 21 Cabbage, others (1)
- 22 Cabbage, largest by weight (1)

**CAULIFLOWER.** 1 head. The heads should be pure white, solid, uniform, smooth, and close-flowered. The heads should not show leaves appearing through the head. There should be no over-mature or ricy specimens. The side leaves should be trimmed about 2 inches above the center of the head. Cut stems, allowing 4 to 6 leaves to remain. Leaves should be free from damage and discoloration. Avoid exposing the head to strong light.

- 23 Cauliflower, white (1)
- 24 Cauliflower, other (1)

**CARROTS.** Avoid oversize. Type is important. Quality is best in medium-sized specimens. Color is very important. A deep orange carrot as nearly coreless as possible shows a good advantage. Greenish or pale yellow, irregular, and coarse specimens should be avoided unless color is characteristic to the variety. Carrots should appear fresh, crisp, firm, smooth, clean, and free from sunburn, side roots, cracks, or other damage. Leave 1" top.

- 25 Carrots, orange, (3)
- 26 Carrots, purple, (3)
- 27 Carrots, others (3)

**CELERY.** 1 bunch. The specimens should be evenly green or creamy, depending on type, and trimmed, leaving no more than 3 inches of the root. All small or broken outer stalks should be removed. An overall length of 14-18 inches is acceptable, measured from the remaining tip of the cut root to the tip of the average length of the longer branches. The heart should be well-developed and firm. The plant may be washed and should be very clean.

- 28 Celeri (1 bunch)

**CORN.** 3 ears. Cobs should be well-filled. The kernels should be in the milk stage (water and dough stages indicate under- and over-maturity). Specimens should have trimmed, fresh, green, tight husks left on. Loose husks should be removed. Do not clip the ear tip. The shank should extend a maximum of ½ inch from the cob.

- 29 Corn, yellow (3)
- 30 Corn, white (3)
- 31 Corn, other (3)

**CUCUMBERS.** 2 fruits. *Slicing cucumbers* should be from 6-9 inches in length and not more than 2-3 inch in diameter. They should not be "fat," but more slender and longer than the pickling type. *Pickling cucumbers* should be small ( $\leq 6$  in), the length should not be less than 2 times the diameter. The shape should be relatively straight with blunt ends and not constricted in any place. The general skin condition for both types should be smooth except for warts and spines which should be removed for pickling cucumbers. The general color should be uniform and medium to dark green. Cucumbers should not be puffy or dull. Stems should be cut about ¼ inch in length. Do not wash, wax, or oil cucumbers, but clean gently with a soft brush.

- 32 Cucumber, pickling, under 4" (2)
- 33 Cucumber, pickling, 4" to 6" (2)
- 34 Cucumber, slicing (2)
- 35 Cucumber, largest by weight (1)
- 36 Cucumber, other (2)

**EGGPLANT.** 1 eggplant. Specimens should be bright, glossy, medium-sized, and from white to deep purple, almost black (depending on the cultivar), with no bronzing or green or white streaks. Blossom scars should be small, the calyxes green, and the stems trimmed to 1-1½ inches (2.5-4.0 cm). Eggplants should not be washed but should be free from injury and soil. Olive oil may be used to increase the gloss, but fruit should not be oily to the touch.

- 37 Eggplant, purple (1)
- 38 Eggplant, others (1)

**GARLIC.** 2 heads. Select plump, well-colored bulbs with dry necks. Trim top to 1 inch and trim roots to 1/4 inch. Do not remove the outer dried coverings; gently brush as much dirt off and let dry. Do not use water. DO NOT BAG.

- 39 Garlic, regular (2)
- 40 Garlic, others (2)

**GREENS.** 1 bunch. Specimens may be washed. Edible portions should be tender and of a good green color except for heart leaves (spinach) which may be somewhat blanched. The exhibit may be either of whole, loose leaves or trimmed plants. The parts should not be mixed in one exhibit. Seed stalks should generally be absent. Exhibitions of other minor greens not listed require essentially the same qualities as those above and below.

- 41 Greens, Collards (1)
- 42 Greens, Kale (1)
- 43 Greens, Mustard (1)
- 44 Greens, Spinach (1)
- 45 Greens, Turnip greens (1)
- 46 Greens, other (1)

**GOURD.** Shape and size must be true to variety. It is critical to indicate the name of the variety exhibited.

- 47 Gourd, fresh (1)
- 48 Gourd, dried (1)
- 49 Gourd, mixture (3)

**HERBS.** If annual, 1 bunch without roots. If perennial, cut and use 1 bunch. Herbs may be placed in a container of water.

- 50 Spearmint
- 51 Peppermint
- 52 Basil
- 53 Sage
- 54 Tarragon
- 55 Chives
- 56 Thyme
- 57 Parsley
- 58 Oregano
- 59 Lavender
- 60 Herb, other not listed

**KOHLRABI.** 3 kohlrabi. Remove roots just below ball. Leave 4 to 6 upper leaves trimmed. Kohlrabi should not be hard, woody, or pithy; it should be from 3 to 4 inches in diameter. The skin should be easily penetrated by thumbnail. Clean but do not wash.

- 61 Kohlrabi (3)

**LETTUCE.** 1 head. Remove roots just below ball. Leave 4 to 6 upper leaves trimmed. Kohlrabi should not be hard, woody, or pithy; it should be from 3 to 4 inches in diameter. The skin should be easily penetrated by thumbnail. Clean but do not wash.

- 62 Lettuce (1)

**ONIONS and SHALLOTS.** 3 onions. Must be thoroughly ripened with necks dry. Harvest ahead of time, peel the outside layer off and let dry completely. Avoid large sizes. Twist tops instead of cutting, and leave ½ " root. **DO NOT BAG!**

- 63 Onion, White onion (3)
- 64 Onion, Yellow onion (3)
- 65 Onion, Red onion (3)
- 66 Shallots (3)
- 67 Onion, largest by weight (1)

**ONIONS, Green.** Bunch of 3. Should be clean, but do not wash or peel skin away. The dry tissue paper skin is to be left on. Onion must be solid and there must be no splits or doubles, Green top should be trimmed 6" with ½ " root left on. **DO NOT BAG!**

- 68 Onion, Green (3)
- 69 Onion, Walking/Egyptian (3)

**PEAS.** 6 pods. Need to be large enough to have three to four well developed peas, but not overmature. Arrange so all pods curve the same way.

- 70 Peas, shelled (6)
- 71 Peas, edible pods (6)

**PEPPERS.** 2 peppers. True to variety, deep in color reflecting ideal maturity, fresh, firm, and symmetrical. All peppers should be free from sunscald or injury caused by insects and diseases.

- 72 Peppers, bell (2)
- 73 Peppers, hot (2)

**PUMPKIN.** 1 pumpkin. Uniformity with variety type, size, and color (check with seed catalog for description of your variety). Free from insect and mechanical injury. Mature as shown by hardness of shell. Stems should be attached. Do not wash.

- 74 Pumpkin, big round (1)
- 75 Pumpkin, big flat (1)
- 76 Pumpkin, baby boo yellow (1)
- 77 Pumpkin, baby boo white (1)
- 78 Pumpkin, other (1)
- 79 Pumpkin, largest by weight (1)

**POTATOES.** 3 potatoes. Round or intermediate potatoes should be at least 2½ inches and not more than 4 inches in diameter (Diameter is taken as the greatest dimension perpendicular to the long axis.) Long potatoes should not weigh less than 6 ounces or more than 1 pound. Specimens should be mature with firmly attached skin. They should be bright, firm, well-shaped, and free from greening, sprouting, shriveling, or other damage. The tubers should be very clean, but not washed. They may be brushed lightly with a soft brush to remove loose soil.

- 80 Potato, Russet type, Centennial Butte, Kennebec, Snow Flake, Katahdin, etc. (3)

- 81 Potato, red, Norlands, Pontiacs, etc. (3)
- 82 Potato, Early Ohio, flesh colored skin (3)
- 83 Potato, blue (3)
- 84 Potato, Yukon Gold (3)
- 85 Potato, French fingerlings (3)
- 86 Potato, any other not listed (3)
- 87 Potato, largest by weight (1)

**RADISHES.** Remove tops 1" above crown. Leave root. Clean but do not wash. The largest diameter should be ¾ to 1¾ inches for globe type and ½ to ¾ inches for icicle type.

- 88 Radishes (3)

**RHUBARB.** 1 bunch of 5 stalks. The stalk should not be less than 1 inch across its flat side measured halfway along the stem length. After trimming the stalk, length should not be less than 12 inches. The stalk should be smooth, red for not less than ¾ of the length, and have been pulled when harvested. Not more than 1 inch of the tops should be left untrimmed. Basal bracts should be removed and the stalks neatly bunched with rubber bands near the top and bottom. The exhibit should be free from any damage.

- 89 Rhubarb (5)

**SQUASH (SUMMER).** 1 squash. Stems should be trimmed to ½ to ½ inch in length. Specimens should be young, tender, and sound and may be cleaned with a soft brush.

- 90 Summer squash, Crookneck or straightneck, 4 to 6 inches long (1)
- 91 Summer squash, Crookneck or straightneck, >6 inches long (1)
- 92 Summer squash, Scallop or pattypan, 2-3 inches in diameter (1)
- 93 Summer squash, Italian Marrow (incl. Cocozelle, Zucchini, Caserta), 5-7 inches long (1)
- 94 Summer squash, Italian Marrow (incl. Cocozelle, Zucchini, Caserta), >7 inches long (1)
- 95 Summer squash, Yellow, 5-7 inches long (1)
- 96 Summer squash, Yellow, >7 inches long (1)
- 97 Summer squash, longest (1)

**SQUASH (WINTER).** 1 squash. Specimen should be well-matured (hard rind) and clean.

- 97 Winter squash, 'Hubbard' group, 12-20 inches long; 5-9 inches thick. (1)
- 98 Winter squash, 'Table Queen' group, 5-8 inches long; 3-6 inches wide. (1)
- 99 Winter squash, 'Alligator', 24 inches long; 6-8 inches across; 20 lbs.(1)
- 100 Winter squash, 'Buttercup', 4 inches long; 6 inches in diameter. (1)
- 101 Winter squash, 'Butternut', 10 inches long; 4 inches neck diameter. (1)
- 102 Winter squash, Squash oddity (1)

**SUNFLOWER FOR SEEDS.** 1 head.

- 103 Sunflower for seeds (1)

**TOMATOES.** 3 fruits. Mature-green (green-wrap): When ripe, they should be red and above-average in size, but not oversize. An acceptable size is from 2½ to 3½ inches. No pink should show, although tomatoes should be full-grown. Ripe: The diameter should be at least 2½ inches, except for preserving and paste tomatoes. For preserving types, 'Red Cherry' should be less than 1 inch, the 'Yellow Plum', 1½ inches across and 2 inches long, and the 'Red' or 'Yellow Pears', 2 inches long. The paste type should be 1½ inches across and 3½ inches long. Present all tomatoes stem up unless elongated, present on its side. Snacking size can be taped to the plate so they don't roll around.

- 104 Tomatoes, snacking-size, green (5)
- 105 Tomatoes, snacking -size, ripe (5)
- 106 Tomatoes, snacking -size, other (5)
- 107 Tomatoes, paste-types including 'Roma' and 'Amish', orange (3)
- 108 Tomatoes, beefsteak-type, green (3)
- 109 Tomatoes, beefsteak-type, ripe (3)
- 110 Tomatoes, regular round-type, green (3)
- 111 Tomatoes, regular round-type, ripe (3)
- 112 Tomatoes, grape, green (3 or more on the stem)
- 113 Tomatoes, grape, ripe (3 or more on the stem)
- 114 Tomatoes, heirloom-type, green (3)
- 115 Tomatoes, heirloom-type, ripe (3)
- 116 Tomatoes, Other (3)
- 117 Tomatillos (3 with husks on)

**TURNIPS.** 3 roots. The diameter should be 1½ to 3 inches. Specimens should be smooth with rootlets removed but 2-3 inches of tap root remaining.

- 118 Turnips (3)



**VEGETABLE DISPLAYS.**

- 119 Unique Vegetable Shape
- 120 Vegetable Display, 2 or more vegetables
- 121 Decorated Zucchini
- 122 Other decorated Vegetable

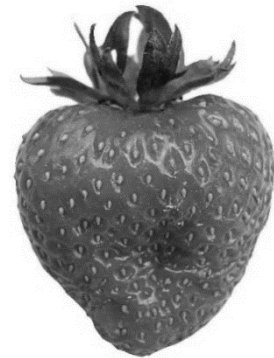
**ANY OTHER VEGETABLE**

- 123 Any other crop not listed

**FRUIT PREPARATION & ENTRY**

Stems should be on all fruits, except sour cherries, raspberries, & plums. Display small fruits in a white or clear open container on a paper plate.

- 200 Apples (3)
- 201 Crabapples (3)
- 202 Plums (3)
- 203 Cherries(3)
- 204 Currants (3)
- 205 Strawberries (3)
- 206 Raspberries (3)
- 207 Gooseberries (3)
- 208 Pears (3)
- 209 Apricots (3)
- 210 Peaches (3)
- 211 Grape, cluster on a vine
- 212 Cantaloup
- 213 Watermelon
- 214 Other fruits not listed (3)
- 215 Fruit basket, 2 or more fruits
- 216 Decorated fruit



# DEPARTMENT K - NEEDLEWORK - SEWING

Superintendent: Anna Rhodes (406) 925-1772

Entry: Tuesday, August 27 from 10 a.m. to 8 p.m.

Judging: Wednesday, August 28

## **SPECIAL AWARDS & SPONSORS:**

### **Adult Division:**

**Champion Over-All Quilt** - \$20.00 - Dillon Quilters Guild  
**Champion Quilted Bedspread** - \$10.00 - Mclsaac Appraisals  
**Champion Lap or Baby Quilt** - \$ 10.00 - Dillon Quilters Guild  
**Champion Seasonal Quilt** - \$10.00 - Dillon Quilters Guild  
**Champion Quilted Item** - \$10.00 - Michele Rieber  
**Champion Wall Hanging** - \$10.00 - Michele Rieber  
**Champion Table Topper-** \$10.00 - Richard & Dorothy Wheeler  
**Champion Sewn Garment** - \$10.00 - Mclsaac Appraisals  
**Champion Sewn Item** - \$10.00 - HUB International, Dillon & Ennis  
**Champion Refurbished Item** - \$10.00 - Beaverhead County Fair  
**Champion Crocheted Garment** - \$10.00 - in memory of Myrtle Pewe, Mary Ann Nicholas  
**Champion Crocheted Item** - \$10.00 - Dennis and Jerry Jo Rehse  
**Champion Knitted Garment** - \$10.00 - Drs. Hunt & Wilson  
**Champion Knitted Item** - \$10.00 - High Peaks Federal Credit Union  
**Champion Framed Needlework-** \$ 10.00 Ed & Barb Malesich  
**Champion Cross Stitch** - \$10.00 Sponsor Needed  
**Champion Embroidery** - \$10.00 Mclsaac Appraisals  
**Champion Doll, Toy, or Stuffed Animal** - \$10.00 - Sponsor Needed  
**Champion Miscellaneous Item** - \$10.00 Ed & Barb Malesich  
**Judge's Choice** - \$10.00 -Farmers Union Insurance, Judy Siring Agency  
**Judge's Choice** - \$10.00 - Richard & Dorothy Wheeler  
**Judge's Choice-** \$10.00 - Drs. Hunt & Wilson  
**Judge's Choice** - \$10.00 - Richard & Dorothy Wheeler  
**Superintendent's Award** - \$10.00 - LS Ready Mix



### **Youth Division:**

**Champion Crocheted or Knitted Exhibit** - \$10.00 - Richard & Dorothy Wheeler  
**Champion Embroidery or Cross Stitch** - \$10.00 Steve & Cathy Cottom  
**Champion Blanket Exhibit** - \$10.00 - Drs. Hunt & Wilson  
**Champion Garment** - \$10.00 - Mclsaac Appraisals  
**Champion Sewn Exhibit** - \$10.00 - Mrs. Buster (Helen) Brown  
**Champion Needlework** - \$10.00 - Forrester Livestock  
**Judge's Choice Youth 12-17-** \$10.00 - Mrs. Buster (Helen) Brown  
**Judge's Choice Youth under 12** - \$10.00 - Richard & Dorothy Wheeler  
**Superintendent's Award** - \$10.00 - Dillon Dental Clinic

\*Youth, use lot # plus Y and your age. Judges will judge in appropriate age groups.

\*Two (2) items per lot # acceptable.

\*Judges Rosettes will be awarded to blue ribbon items. The Superintendent (which is not a judge) may award her/his award to any item regardless of place given.

\*The Superintendents and Judges in Needlework-Sewing (Dept. K), with the permission of the Fair Board, reserve the right to disqualify any entry which is soiled.

### **JUDGING GUIDELINES**

Appropriate use of Materials & Decorations (30 points), Workmanship (30 points), Design and Color (20 points), General Appearance (20 points).

## **QUILTS AND QUILTING**

Find lot number corresponding to item size, add technique letter, followed by finishing number, end with experience, (queen pieced long arm quilted with experience, 100F1X)

- 100 Bedspread
- 101 Lap quilt
- 102 Baby Quilt
- 103 Wall hanging
- 104 Table runner
- 105 Table topper
- 106 Pillow
- 107 Bag
- 108 Other item not listed

- A Appliqued
- B Combination of techniques
- C Cross Stitched
- D Embroidered
- E Panel
- F Pieced
- G Rag
- H Other

- 1 Long arm machine quilting
- 2 Sewing machine quilting
- 3 Hand quilted
- 4 Tied
- 5 None

- N Novice quilter
- X Experienced quilter

## **MISCELLANEOUS SEWING**

- 115 Aprons
- 116 Hat
- 117 Scarf
- 118 Slippers
- 119 Purse/Clutch
- 120 Tote/Bag
- 121 Potholders, set of 2
- 122 Place mats, set of 2
- 123 Table topper
- 124 Tablecloth
- 125 Pillow
- 126 Pillowcase
- 127 Pincushion
- 128 Receiving blanket
- 129 Holiday stocking
- 130 Holiday, other
- 131 Other item, not listed

## **SEWN CLOTHING**

### **Infant /Child**

- 140 Coat/Jacket
- 141 Costume
- 142 Dress
- 143 Jumper

- 144 Nightwear
- 145 Pants
- 146 Skirt
- 147 Shirt
- 148 Sweater
- 149 T-Shirt
- 150 Outfit (2 pieces)
- 151 Ensemble (3 pieces)
- 152 Other garment, not listed

### **Teen/ Adult**

- 160 Coat/Jacket
- 161 Costume
- 162 Dress, formal
- 163 Dress, casual
- 164 Jumper or jumpsuit
- 165 Nightwear
- 166 Pants
- 167 Shirt
- 168 Skirt
- 169 Sweater
- 170 T-Shirt
- 171 Vest
- 172 Outfit (2 Pieces)
- 173 Ensemble (3 pieces)
- 174 Other item, not listed

## **REFURBISHED ARTICLES**

(Include picture of item before refurbishing if possible.)

- 180 Adult clothing
- 181 Child clothing
- 182 Apron
- 183 Bag or Tote
- 184 Purse or Clutch
- 185 Blanket
- 186 Pillow
- 187 Pillowcase
- 188 Scarf
- 189 Holiday
- 190 Table topper
- 191 Other item, not listed

## **CROCHET**

- 200 Afghan
- 201 Baby Afghan
- 202 Centerpiece/Doily, under 15"
- 203 Centerpiece/Doily, 15" or over
- 204 Crocheted trim
- 205 Dishcloths, matching set of 2
- 206 Doilies, matching set of 2
- 207 Dress, other than infant
- 208 Hat
- 209 Headband
- 210 Mittens
- 211 Gloves
- 212 Novelties
- 213 Pillows
- 214 Place mats, set of 2
- 215 Potholders

- 216 Purse
- 217 Bag
- 218 Scarf
- 219 Shawl
- 220 Slippers
- 221 Sweater
- 222 Tablecloth
- 223 Table topper
- 224 Vest
- 225 Set or 2 crochet items
- 226 Display of 3 or more crochet items
- 227 Other crocheted item, not listed

**Crocheted Infant/ Child Wear**

- 230 Booties
- 231 Cap
- 232 Dress
- 233 Mittens
- 234 Sweater
- 235 Set of 2 or more baby items
- 236 Other crochet infant wear, not listed

**KNITTING**

- 250 Afghan
- 251 Baby Afghan
- 252 Centerpiece/Doily, under 15"
- 253 Centerpiece/ Doily, over 15"
- 254 Doilies, matching set of 2
- 255 Dishcloths, matching set of 2
- 256 Gloves /fingerless
- 257 Mittens
- 259 Hat or cap
- 260 Headband
- 261 Pillow
- 262 Purse
- 263 Bag
- 264 Slippers
- 265 Scarf
- 266 Shawl
- 267 Cowl
- 268 Sweater
- 269 Tablecloth
- 270 Vest
- 271 Display of 3 or more knitted items
- 272 Other knitted item, not listed

**Knitted Infant/ Child Wear**

- 274 Booties
- 275 Cap
- 276 Dress
- 277 Mittens
- 278 Sweater
- 279 Set of 2 or more items
- 280 Other knitted infant item, not listed

**EMBROIDERY**

- 290 Brazilian Embroidery Item
- 291 Candle-wicked item
- 292 Chicken Scratched item
- 293 Crewel Item
- 294 Cutwork item
- 295 Hardanger item
- 296 Punch needle embroidery item
- 297 Silk ribbon embroidery item
- 298 Traditional Embroidered item
- 299 Traditional Embroidered Picture
- 300 Traditional Embroidered Pillowcase or Dish Towel
- 301 Other embroidered item, not listed
- 302 Set of 3 or more embroidered items

**CROSS STITCH**

**COUNTED CROSS STITCH**

- pic lot number followed by A-H
- 310 Picture, under 8"x 10"
- 311 Picture, 8"x 10" to 16" x 20"
- 312 Picture, over 16"x20"
- 313 Other Counted Cross Stitch item
- 314 Counted Cross Stitch set 2 or more
- A Animal Life
- B Flowers
- C Holiday
- D People
- E Sampler
- F Still Life
- G Verse
- H Other

**STAMPED CROSS-STITCH**

- 315 Picture
- 316 Pillow/Pillowcase
- 317 Tablecloth/Towel
- 318 Other stamped cross stitch item

**MISCELLANEOUS NEEDLEWORK**

- 320 Beaded item
- 321 Belts
- 322 Fabric stiffened item
- 323 Folded Star item
- 324 Latch hook item
- 325 Plastic Canvas Item
- 326 Smocking item
- 327 Swedish darning and weaving item
- 328 Tatting item
- 329 Wool Applique item
- 330 Woven item
- 331 Other needlework item, not listed

## **STUFFED ANIMALS, DOLLS, & TOYS**

### **ANIMALS**

- 340 Sewn toy animal
- 341 Sewn decorative animal
- 342 Crocheted toy animal
- 343 Crocheted decorative animal
- 344 Knitted toy animal
- 345 Knitted decorative animal
- 346 Other technique toy animal
- 347 Other technique decorative animal

### **DOLLS**

- 350 Sewn toy doll
- 351 Sewn decorative doll
- 352 Crocheted toy doll
- 353 Crocheted decorative doll
- 354 Knitted toy doll
- 355 Knitted decorative doll
- 356 Other technique toy doll
- 357 Other technique decorative doll
- 358 Doll wardrobe, sewn
- 359 Doll wardrobe, crocheted
- 360 Doll wardrobe, knitted
- 361 Doll wardrobe, combination of techniques
- 362 Other Doll wardrobe

### **OTHER TOYS**

- 370 Crocheted stuffed toy
- 371 Knitted stuffed toy
- 372 Machine sewn stuffed toy
- 373 Hand sewn stuffed toy
- 374 Other stuffed toy

### **RUGS**

- 380 Braided rug
- 381 Loom woven rug
- 382 Hooked rug
- 383 Wool Penny rug (table ring)
- 384 Other rug, not listed

### **MOUNTAINEERING WEAR/ ITEMS**

- 390 Coat, leather, or animal skin
- 391 Hat, leather, or animal skin
- 392 Gloves or moccasins, leather
- 393 Other garment, leather, or animal skin
- 394 Other item, leather, or animal skin

**DEPARTMENT L**  
**DRAWING & PAINTING, PHOTOGRAPHY, HOBBIES & CRAFTS**  
Superintendent: Stacy Terrill (406) 370-3091

**Entry: Tuesday, August 27 from 10 a.m. to 8 p.m.**  
**Judging: Wednesday, August 28**

**SPECIAL AWARDS:**

**Outstanding Youth Woodworking Exhibit, In Memory of John Maki** - Todd & Christy Maki  
**Best of Show, Adult - Arts & Hobbies Building - Judges Choice** - \$20.00 - Turner Ranch Properties  
**Best of Show, Youth - Arts & Hobbies Building - Judges Choice** - \$10.00 - LS Ready Mix  
**Superintendent Award, Adult** - \$10.00 - Be the Change 406 Coalition  
**Superintendent Award, Youth** - \$10.00 - Dillon Dental Clinic  
**Most Creative Adult** - \$10.00 - Be the Change 406 Coalition  
**Most Creative Youth** - \$10.00 - Dillon Dental Clinic  
**Most Unique Exhibit** - \$10.00 - The Bookstore  
**Champion Youth Exhibitor** - \$20.00 - Cathy Weber, Art maker (Awarded to a youth who shows enthusiasm for the arts through multiple entries in Drawing, Painting, Photography, Hobbies & Crafts)

**Drawing & Painting**

**Best of Show, Thru Age 8** - 2 awards @ \$10.00 - Windmill Livestock, Tom & Sharon Rice; Dennis & Jerry Jo Rehse  
**Best of Show, Ages 9-11** - 2 awards @ \$10.00 - Forrester Livestock and Mclsaac Appraisals  
**Best of Show, Ages 12-14** - 2 awards @ \$10.00 - High Peaks Federal Credit Union; Dennis & Jerry Jo Rehse  
**Best of Show, Ages 15-17** - \$10.00 - Cathy Weber, Art maker  
**Best of Show, Adult** - \$10.00 - Dillon Soroptimist Club  
**Champion Drawing, Youth** - \$10.00 - Cathy Weber, Art maker  
**Champion Drawing, Adult** - \$10.00 - Cathy Weber, Art maker  
**Champion Pencil Drawing, Youth** - \$10.00 - Turner Ranch Properties  
**Champion Pencil Drawing, Adult** - \$10.00 - Jeannette Redfield & Donna Sprinkle - In memory of Patricia Redfield  
**Champion Painting, Youth** - \$10.00 - Be the Change 406 Coalition  
**Champion Painting, Adult** - \$10.00 - Stockman Bank  
**Champion Oil Painting, Youth** - \$10.00 - The Wisdom Cabin  
**Champion Oil Painting, Adult** - \$10.00 - Kiwanis Club of Dillon  
**Champion Watercolor, Youth** - \$10.00 - Be the Change 406 Coalition  
**Champion Watercolor, Adult** - \$10.00 - Be the Change 406 Coalition and Turner Ranch Properties

**Photography**

**Most Outstanding Photograph** - \$25.00 - Bill Howard Sampson  
**Champion Photograph, Youth** - \$10.00 - Dillon Tribune  
**Champion Photograph, Adult** - \$10.00 - Dillon Tribune  
**Best Farm Photo** - \$15.00 - Bill Howard Sampson  
**Best Humorous Photograph** - \$10.00 - Dillon Tribune  
**Best Photograph of "A County Fair" (any Fair), Color/BW** - \$15.00 - Madison Co. Fair & Rodeo

**Hobbies and Crafts**

**Most Outstanding Exhibit, Thru Age 8** - 2 awards \$10.00 each - Vigilante Electric Co-op  
**Most Outstanding Exhibit, Ages 9-11** - 2 awards @ \$10.00 - Terry Johnson & Elaine Husted  
**Most Outstanding Exhibit, Ages 12-14** - 2 awards @ \$10.00 - The Wisdom Cabin  
**Most Outstanding Exhibit, Ages 15-17** - \$10.00 - Vigilante Electric Co-op, Inc.  
**Most Outstanding Exhibit, Adult** - \$10.00 - Dr. Ron Loge  
**Champion Leatherwork, Youth** - \$10.00 - Frecker's Saddlery  
**Champion Leatherwork, Adult** - \$10.00 - Frecker's Saddlery  
**Champion Woodwork, Youth** - \$10.00 - KDBM/KBEV  
**Champion Woodwork, Adult** - \$10.00 - Mclsaac Appraisals  
**Champion Framed Exhibit** - \$10.00 Ed & Barb Malesich



## General Rules:

1. Amateur exhibits only (provides no more than 50% of income).
2. All hanging exhibits must have a safe, secure hanging device. (see below)\*
3. Exhibits must have all entry forms and tags filled out. No late entries will be accepted.
4. Cover any signatures so that the artist's identity is not readily apparent to the judge.
5. Entries which demonstrate sewing as the primary focus should be taken to the Needlework Department.

Note: A 3x5 card with explanatory notes, secured to a unique entry, is acceptable and useful for the judge.

**Youth:** Add 'Y' to lot number (e.g. 101Y), and designate age on both the entry form & tag.

Entries will be judged in the following age groups:

Thru age 8

Ages 9-11

Ages 12-14

Ages 15-17

Adult: Ages 18 & over.

Senior: Ages 65 & over. Add 'S' to the lot number (e.g. 101S). If you are 65 or older, you are not required to (but you may) enter under the Senior age group.

Handicapped: Ages 18 & over. Add 'H' to the lot number (e.g. 101H).

**\*Acceptable Hanging Fixtures:** To protect your work from damage, and to maintain uniformity in displays, all drawing, painting, and photography exhibits must have an adequate hanger. These may include: Youth under 12 years old may use construction paper. Ages 12 through adult must use: card stock, poster or foam board, shrink wrap, or traditional framing.

### Drawing, Painting, & Photography - Definitions:

Abstract—represents recognizable reality, but with non-traditional methods; using shapes, forms, colors and textures.

Computer Art—any piece of art created using computer software. May include virtual painting & sketching, 3D art, etc.

Enhanced photos—digitally manipulated to dramatically enhance or modify color, motion, shape, design, etc.

Monochrome—varying tones of a single color; such as black & white (grey-scale), sepia, etc.

Portrait—human form from the shoulders up.

Still Life—depiction of inanimate objects (traditionally bowls of fruit & flowers, etc.).

### Hobbies & Crafts - Definitions:

Batik—dyeing fabric, having first applied wax to the parts to be left undyed.

Intaglio—engraved design into a material.

Lapidary—cutting, polishing, or engraving stones & gems.

Mobile—a decorative structure, suspended from the ceiling to turn freely in the air.

Quilling—an ornamental style of shaping paper or fabric in delicate pleats and cylindrical folds, etc.

# Division I – Drawing & Painting

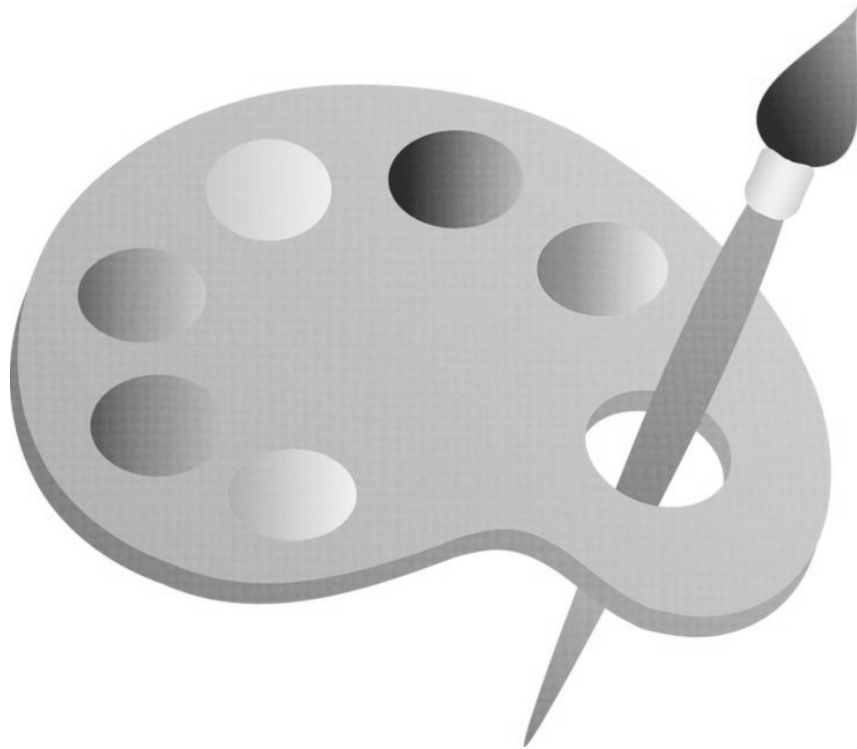
1. Each exhibitor may enter 2 items per lot number.
2. **Filling out tags:** First, identify the **medium** of your piece of art, and write down the number (including the dash!) under “Lot #” of the tag. Then select the **subject** of your art, and add the appropriate number (e.g. 05-304). Lastly, indicate age group, if applicable.

## Standards for Judging Drawing & Painting

Skillfulness of medium, uniqueness & creativity, visual appeal, appropriate theme, apparent statement.

### Medium

- 01- Acrylic
- 02- Chalk
- 03- Charcoal
- 04- Colored Pencil
- 05- Computer Art
- 06- Crayon
- 07- Felt-tip Marker
- 08- Mixed Media
- 09- Oil
- 10- Pastel (oil or chalk)
- 11- Pen & Ink
- 12- Pencil
- 13- Tempera
- 14- Watercolor



### Subject

- 301 abstract
- 302 animal
- 303 cartooning
- 304 fantasy
- 305 human form
- 306 portrait
- 307 still life
- 308 floral
- 309 landscape
- 310 waterscape
- 311 architecture
- 312 machinery
- 313 vehicle
- 314 patriotic
- 315 calligraphy
- 316 lettering
- 317 other



## Division II – Photography

1. Each exhibitor may enter 2 items per lot number.
2. Minimum size 3x5". No maximum size.
3. Entries in the Photomontage and Photo Series categories must be presented in a single unit.
4. **Filling out tags:** First, identify the Type of your photograph, and write down the letter (include the dash) under Lot # of the tag. Then select the Subject of your photo, and add the appropriate number (e.g. C-23). Lastly, indicate age group, if applicable.

### Standards for Judging Photographs

Appropriate framing, cropping, focus, lighting, overall appeal, uniqueness & creativity.

### Type

C- Color      M- Monochrome      E- Enhanced

### Subject

#### Animals

- 21 birds
- 22 domestic single
- 23 domestic groups
- 24 domestic w/ people
- 25 insects
- 26 wildlife single
- 27 wildlife groups
- 28 wildlife w/ people

#### People

- 31 babies
- 32 children
- 33 family life
- 34 human form
- 35 portrait
- 36 people in groups

#### Events & Activities

- 41 celebrations, any event
- 42 past fair, rodeo, or parade
- 43 seasonal
- 44 hunting & fishing
- 45 farm & ranch life

#### Nature

- 51 sunrise or sunset
- 52 floral
- 53 landscape
- 54 waterscape
- 55 skyline
- 56 plant
- 57 rock

#### Theme

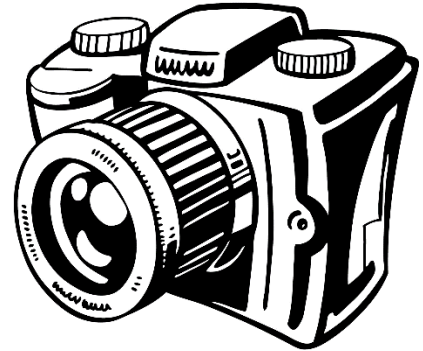
- 61 emotions
- 62 humorous
- 63 fantasy
- 64 patriotic
- 65 reflections
- 66 shadows
- 67 story
- 68 western
- 69 abstract
- 70 still life
- 71 action
- 72 vintage, antique, nostalgia

#### Machines & Things

- 81 architecture
- 82 playground
- 83 pedal vehicle
- 84 wagons & carriages
- 85 horse-drawn farm machines
- 86 power farm machines
- 87 automobiles (incl. trucks & buses)
- 88 trains & railways
- 89 airplanes, helicopters, kites, balloons, etc.
- 90 ships & boats
- 91 other machine

#### Miscellany

- 95 photomontage
- 96 photo series
- 97 other



## Division III – Hobbies & Crafts

1. Only 1 entry per lot number.
2. Lego Entries: To prevent loss of parts, all entries must be either glued together as a single unit, or contained and secured in a cellophane wrapped box, sturdy base, or diorama.
3. Refurbished Item: Include a before photo, and/or explanatory note of the process involved.

### Standards for Judging Hobbies & Crafts

Skillfulness of medium, uniqueness & creativity, visual appeal.

#### Books

- 101 bookbinding
- 102 decorative/themed journal
- 103 scrapbook
- 104 themed sketchbook

#### Clay

- 111 ceramic, chalked
- 112 ceramic, glazed
- 113 ceramic, stained
- 114 polymer clay creation
- 115 pottery, hand
- 116 pottery, wheel

#### Fabric Craft (not sewn)

- 121 batik
- 122 felt creation
- 123 macramé
- 124 painted
- 125 tie dye
- 126 woven
- 127 fabric craft, other

#### Glass

- 131 stained glass, kit
- 132 stained glass, original
- 133 glass blowing
- 134 other

#### Jewelry

- 141 kit
- 142 set
- 143 beads, pony
- 144 beads, seed
- 145 beads, other
- 146 enamel
- 147 intaglio or cameo
- 148 lapidary
- 149 metalwork
- 150 shellwork
- 151 other

#### Leatherwork

- 161 kit
- 162 tooling
- 163 weaving & sewing

#### Lego Creations

- 171 kit
- 172 original
- 173 combo (kit & original)

#### Mosaic

- 181 stepping stones
- 182 wall-hanging
- 183 other

#### Paper Craft

- 191 coloring book page
- 192 construction paper object
- 193 paper bag craft
- 194 papier mâché
- 195 cards
- 196 cards, set

#### Sculpture

- 201 clay
- 202 metal
- 203 wood
- 204 other

#### Soap

- 211 bar soap, kit
- 212 bar soap, original
- 213 liquid soap, kit
- 214 liquid soap, original
- 215 soap carving
- 216 gift arrangement

#### Themed Craft

- 221 Christmas, kit
- 222 Christmas, original
- 223 other holiday, kit
- 224 other holiday, original
- 225 ethnic theme, any media
- 226 hunting & fishing craft
- 227 wreaths, any media

#### Traditional Arts

- 231 baskets & weaving
- 232 candles
- 233 dried flowers in a frame
- 234 tole-painting
- 235 quilling

#### Woodwork

- 241 kit
- 242 birdhouse
- 243 furniture
- 244 hand carved
- 245 machine & hand
- 246 pieced
- 247 wood-burning

#### Any Media

- 251 coaster
- 252 collage
- 253 collections
- 254 diorama
- 255 dolls
- 256 educational project
- 257 hats
- 258 mask
- 259 mobiles
- 260 wall-hanging
- 261 refurbished item (see above)

#### Miscellany

- 271 bead craft, not jewelry
- 272 Perler bead craft
- 273 duct tape craft
- 274 epoxy resin craft
- 275 metalwork
- 276 model kits
- 277 paint-by-number
- 278 pet rock
- 279 sand creation
- 280 scratch art
- 281 string art
- 282 mixed media

# DEPARTMENT M - FLORICULTURE

Cut Flowers, Container Plants, Planters, Yards and Designs

Superintendents: Mary Kempf (406) 925-2903 and Cathy Speich-Ferguson (406) 925-1994

Entry: Tuesday, August 27 from 10 a.m. to 8 p.m.

Judging: Wednesday, August 28

(THE PUBLIC IS ENCOURAGED TO ATTEND OPEN JUDGING; JUDGING STARTS AT NOON)

## SPECIAL AWARDS & SPONSORS:

### Adult Division Awards:

#### Division I ~ Cut Flowers

- Best Achillea - in memory of Relland England - \$10.00 - Dillon Garden Club
- Best Aster - in honor of Eileen Stephens - \$10.00 - Ed & Barb Malesich
- Best Bachelor Button - in memory of Lyda Nelson - \$10.00 - Dillon Garden Club
- Best Begonia - in memory of Gloria Broksle - \$10.00 - Dillon Garden Club
- Best Bells of Ireland - in memory of Rollie Atkinson - \$10.00 - Dillon Garden Club
- Best Calendula - in honor of Jackie Howery - \$10.00 - Dillon Garden Club
- Best Cosmos - \$10.00 - Jeannette Redfield & Donna Sprinkle
- Best Dahlia - in memory of Bob Mobley - \$10.00 - Dillon Garden Club
- Best Daisy - in memory of Bob Hamel - \$10.00 - Dillon Garden Club
- Best Gladiolus - in memory of Evelyn Robertson - \$10.00 - Beaverhead Co. Fair
- Best Lily - in memory of Carl Hollensteiner - \$10.00 - Dr. Ron Loge
- Best Marigold - in memory of Sen. Everett Dirksen - \$10.00 - Dillon Garden Club
- Best Pansy - in memory of Rev. HN Tragitt - \$10.00 - Dillon Garden Club
- Best Petunia - in honor of Bob & Jean Thomas - \$10.00 - Dillon Garden Club
- Best Poppy - in honor of Harriet Watkins - \$10.00 - Womack's Printing Place
- Flanders Field Red Single Poppy Award - \$10.00 - American Legion Auxiliary
- Best Phlox - in memory of Rose Swetish - \$10.00 - Womack's Printing Place
- Best Rose - \$10.00 - City of Dillon
- Best Snapdragon - in memory of Katherine Chaffin - \$10.00 - McIsaac Appraisals
- Best Sunflower - in honor of Dean Barnes - \$10.00 - Dillon Garden Club
- Best Sweetpea - in honor of Esther Hamel - \$10.00 - Dillon Garden Club
- Best Collection-Fresh Flowers - in memory of Leola Sanders - \$10.00 - Dillon Garden Club
- Best of Show, Cut Flowers - \$10.00 - Tropical Sno



#### Division II ~ Container Plants, Special Culture, Planters & Yard

- Best African Violet - in memory of Evelyn Robertson - \$10.00 - Beaverhead Co. Democrats
- Best Flowering Container - in memory of GeorgeAnne Harwood - \$10.00 - Dillon Garden Club
- Best Foliage Plant - \$10.00 - Roxi's Greenhouse
- Best Cactus - in memory of Jim Day - \$10.00 - Dillon Garden Club
- Best Miniature Cactus - in memory of Joe Deleon - \$10.00 - Dillon Garden Club
- Best Succulent - \$10.00 - KDBM/KBEV
- Best Outdoor Planter - \$25.00 - Danish Brotherhood
- Best in Show Container / Plant (Division II) - \$10.00 - Turner Ranch Properties
- Best Yard - in memory of Paul Boetticher - \$15.00 - Dillon Garden Club

#### Division III ~ Artistic Designs

- Best Corsage / Boutonniere - in memory of Esther Speich - \$10.00 - Dillon Garden Club
- Best Dried Arrangement - in memory of Louise Riley - \$10.00 - Dillon Garden Club
- Best Creative Design - in memory of Cathy Atkinson - \$25.00 - Dillon Garden Club
- Best in Show, Arrangements, Novice - \$10.00 - Turner Ranch Properties
- Best in Show, Arrangements, Intermediate - \$10.00 - Dillon Garden Club

**Best in Show, Arrangements, Exp.** - \$10.00 - Beaverhead County Fair  
**Best in Show, Small/Miniature Arrangement** - \$10.00 - Dillon Garden Club

### Department Awards

**SUPERINTENDENT'S AWARD** - \$25.00 - in memory of Doris Richard - Mary Kempf & Cathy Speich-Ferguson

**THE ROSE SWETISH MASTER GARDENER TRAVELING TROPHY** - Dillon Garden Club  
(To be eligible exhibitor must have entered all three categories with added points given for each colored ribbon awarded.)

**I Love Gladiolus Award** - \$25.00 - Deanna Richard

This award was established in 2024 to encourage others to grow Gladiolus! Bring those beautiful "glads" to the fair!!

### Youth Division Awards:

**Best in Show, Cut Flowers** - \$10.00 – American Legion Auxiliary

**Best Youth Rose - in memory of Louise Riley** - \$10.00 - Michael Riley Memorial

**Best Youth Pansy - in memory of Barbara Riley** - \$10.00 - Michael Riley Memorial

**Best Youth Petunia - in memory of Fay Riley** - \$10.00 - Michael Riley Memorial

**Best Youth Sunflower** - \$10.00 - Gerta Mular

**Best Youth Succulent/Cactus** - \$10.00 - Michael Riley Memorial

**Best Youth Foliage Plant** - \$10.00 - Dillon Garden Club

**Best Youth Flowering Plant** - \$10.00 - Roxi's Greenhouse, Mclsaac Appraisals

**Best Youth Fresh Arrangement** - \$10.00 - Candy Hoerning, Justice of the Peace

**Best Youth Dried Arrangement - in memory of Louise Riley** - \$10.00 - Michael Riley Memorial

**Best Fairy Garden Container Award - in memory of Marion Zink** - \$10.00 – Dillon Garden Club

**Best Youth Small/Miniature Arrangement - in honor of Cathy Speich-Ferguson** - \$10.00 - Michael Riley Memorial

## **FLORICULTURE GENERAL INFORMATION**

The Floriculture Department is divided into three Divisions, Cut Flowers (Division I); Container Plants, Special Culture, Planters and Yards (Division II); and Artistic Designs (Division III). Division II is further divided into four parts, Part 1: Flowering Containers; Part 2, Foliage Containers; Part 3 Cacti and Succulents and Part 4, Special Culture, Outdoor Planters and Yards. The Superintendent and staff will gladly assist an exhibitor who has questions in entering the correct Lot Number.

ALL LOTS ALLOW TWO ENTRIES PER PERSON PER LOT UNLESS MARKED WITH AN ASTERISK.

YOUTH means any person 17 years of age and under. Youth classes are **available in all Lots**; youth entries should be designated by a "Y" and the current age of child. For example, 100-A(Y8) would be for a youth, age 8, entering a golden Achillea. Special Youth classes are available in the Design Division. **PLEASE SHOW AGE ON THE TOP RIGHT ENTRY TAG. YOUTH SHOULD ENTER ON YOUTH COLORED (PINK) ENTRY BLANKS.**

## **DIVISION I - FRESH FLOWERS**

**Conditioning Fresh Flowers:** Always cut fresh flowers in the early morning when they have had the benefit of the night's cooling temperatures. Stems are tight with water, leaves are covered with dew and most blossoms have recovered from the excesses of the prior day's heat. While it is possible to cut flowers in the evening, morning-cut flowers will have greater vigor. If cutting in the evening let flowers recover from any wilt due to heat and/or drought. Whenever possible chose flowers just at maturity and not showing pollen rather than older blossoms.

Take a bucket of TEPID, **NOT COLD WATER** into the garden and plunge the cut stems directly into it. Cold water is not recommended as it shocks a flower, blocks pores and interferes with absorption of water thereby decreasing longevity. Stems may be cut either slantwise or horizontally. Buckets and cutters should be surgically clean; conditioners or foods may be added to the water and are required for some plants. Commercial conditioners are available at all local flower shops; a home-made solution using 1 tablespoon of corn syrup and 10 drops of liquid bleach to a gallon of warm water works well. Similarly, a mixture of lemon/lime soft drink and warm water in the ratio of 1 part soda to 2 parts water is effective.

Keep the buckets in a cool, shady place while cutting. When finished take the flowers indoors and check each to see that each is (Leave the thorns on roses as removing them may damage the stem and then the flower). Let the flowers condition in a cool, shady place for 6 – 8 hours. Foliage used for arrangements should have similar treatment.

Some flowers exude a milky, rubbery substance when cut. Poppies are the most common example. These flowers must be burned or steamed at each place there is a cut or removed leaf in order to be preserved.

Hollyhocks, delphiniums, dahlias and other hollow stemmed species need special treatment. Hollyhocks should be placed in water to which a handful of rock salt per quart has been added; stems should be slit about 4 inches and seared. Delphiniums should have hot, but not boiling water poured in the stem, the stem covered, lowered into tepid water and then left to cool. Dahlias should be conditioned in hot but not boiling water. Some exhibitors burn the end of dahlia stems as for poppies.

### Definitions and General Notes:

When annual, biennial and perennial forms are allowed in one lot, the exhibitor must use either annual, biennial or perennial; do not mix annuals, perennials or biennials in the lot. Staging information: No plant foliage (leaves) should be displayed underwater. Wedging should be used to keep stems in center of container (saran wrap works well). Each Sunflower stem shall display only 1 bloom; remove buds from stems. Entering a Lot under "Mixed Colors" refers to each bloom in your entry being a different color from the others. Examples of "Mixed Colors" would be 3 stems, with 3 different colors of blooms (1 pink, 1 red, 1 white) or 3 stems, 2 different colors of blooms (2 pink and 1 red). Any "mix" of colors would be accepted under Lots stating "Mixed Colors." "Variegated" refers to a single bloom exhibiting different colors, especially as irregular patches or streaks (example: 1 purple with white bloom). This item would NOT be entered in "Mixed Colors" unless the other blooms in your entry were of different colors (example: 3 stems, 3 different colors of blooms (1 purple with white, 1 pink and 1 red). Unless otherwise specified, all specimens in an exhibit must be the same color or color pattern.

The following definitions must be followed for proper exhibition:

**BLOOM:** means one (1) flower; foliage required.

**HEAD:** for flowering cabbage and kale, the apical bud.

**STALK:** shall mean a stem bearing a terminal cluster of many flowers with foliage required unless otherwise indicated.

**STEM:** shall mean a single flower on one (1) stem with foliage required, unless otherwise indicated.

**SPIKE:** shall mean a single stem possessing many individual florets; foliage a required.

**SPRAY:** shall mean 3 or more flowers per stem with foliage.

**SPECIMEN:** shall mean a typical representative of the genus, species, type or cultivar. Called for when there is a possibility of more than one bloom form in a lot as indianthus, or for a foliage plant.

**THE FOLLOWING LOT #'s WILL BE LIMITED TO ONE (1) ENTRY LOT PER PERSON. BACHELOR BUTTONS 108 A-B; CALENDULA 113 A&B; MARIGOLDS 165 A-1; PANSIES 167 A&B (Unless they are a different color).**

## FRESH FLOWERS

**Achillea: Lots 100 A - F are eligible for the Relland England Achillea Award.**

100A Achillea, gold (Gold Plate types), 3 stems

100B Achillea, pink or red, 3 stems

100C Achillea, white, 3 stems

100G Achillea collection: 5 different colors in one container; eligible for Leola Sanders Collection Award.

101 Ageratum, any color, 3 stems

**African Daisies:** Please contact Superintendent for special exhibition care.

102A Arctotis, Osteospermum or Venidium, daisy shaped, one (1) color, 3 stems

102D African Daisy Collection: five (5) different colors or types displayed in one container; eligible Leola Sanders Collection Award.

102E Agasache

**Alyssum:**

103A Alyssum, white, 3 spikes

103B Alyssum, colored, 3 spikes

**Amaranthus:**

104A Caudatus, Rope forms (Love Lies Bleeding), large, any color, 1 stem

104B Caudatus, Rope forms (Love Lies Bleeding), small-medium, one (1) color, 3 stems

104G Amaranthus Collection: five (5) different types displayed in one container; eligible for the Leola Sanders Collection Award

104H Anemone

**Asters: Lots 105A – 105Q and 105S-T are eligible for the Eileen Stephens Aster Award.**

**Standard Annual Varieties:**

105A Asters, crested (Pincushion, Princess, Quill, Tiger Paws, etc.) one (1) color, 3 stems

105B Asters, crested (Pincushion, Princess, Quill, Tiger Paws, etc.), mixed colors, 3 stems

105C Asters, double (Ball, Duchess, Peony, Ribbon, etc.), one (1) color, 3 stems

105D Asters, double (Ball, Duchess, Peony, Ribbon, etc.), mixed colors, 3 stems

105E Asters, pompon (Powderpuff, Bouquet, etc.), one (1) color, 3 sprays

105F Asters, pompon (Powderpuff, Bouquet, etc.), mixed colors, 3 sprays

105G Asters, semi-double (Serenade, Matsumoto, etc.), one (1) color, 3 stems

105H Asters, semi-double (Serenade, Matsumoto, etc.), mixed colors, 3 stems

105I Asters, shaggy (Comet, Crego, Ostrich Plume, etc.), one (1) color, 3 stems

105J Asters, shaggy (Comet, Crego, Ostrich Plume, etc.), mixed colors, 3 stems

105K Asters, single (Madelaine, etc.), one (1) color, 3 stems

105L Asters, single (Madelaine, etc.), mixed colors, 3 stems

105M Asters, spider (Cactus, Unicorn, etc.), one (1) color, 3 stems

105N Asters, spider (Cactus, Unicorn, etc.), mixed colors, 3 stems

105O Asters, other flowered (The Hulk etc.), 3 stems

**Dwarf and Miniature Annual Varieties**

Dwarf and miniature asters may be of any type or variety; however a poorly grown standard aster is not a dwarf or miniature. Please name type or variety.

105P Asters, dwarf and miniature, any form, one (1) color, 3 stems

105Q Asters, dwarf and miniature, any form, mixed colors, 3 stems

105R Annual Aster Collection: five (5) asters in different colors or flower forms displayed in one container; eligible for the Leola Sanders Collection Award.

**Perennial Varieties:**

105S Asters, perennial, standard, one (1) color, 3 sprays

105T Asters, perennial, dwarf, one (1) color, 3 sprays

105U Perennial Aster Collection: five (5) perennial asters in different colors or sizes displayed in one container; eligible for the Leola Sanders Collection Award.

**Bachelor Buttons (Centaurea): Includes annual and perennial forms. Do not mix annual and perennial forms. Lots 106A – D are eligible for the Lyda Nelson Bachelor Button Award.**

106A Centaurea, single, one (1) color, 3 stems

106B Centaurea, single, mixed colors, 3 stems

- 106C Centaurea, double, one (1) color, 3 stems  
 106D Centaurea, double, mixed colors, 3 stems  
 106E Centaurea Collection: 5 different colors in one container; eligible for the Leola Sanders Collection Award.  
 108 Basil, ornamental: any color or form, 3 stems

**Begonias:** Lots 109 A – C are eligible for the Gloria Brooksle Begonia Award. All lots may be divided by color if there are sufficient entries. Please display in a covered dish as for Pansies. No leaf required for tuberous forms.

- 109A Begonia, tuberous, double, any form, 1 bloom  
 109B Begonia, tuberous, single, any form, 1 bloom  
 109C Begonia, fibrous (wax), one (1) color, 3 stems with foliage

**Bells of Ireland: eligible for the Rollie Atkinson Bells of Ireland Award.**

- 110 Bells of Ireland, 3 stems, groomed

**Calendulas: Lots 111 A – H are eligible for the Jackie Howery Calendula Award**

- 111A Calendula, single, one (1) color, 3 stems  
 111B Calendula, single, mixed colors, 3 stems  
 111C Calendula, double, one (1) color, 3 stems  
 111D Calendula, double, mixed colors, 3 stems  
 111E Calendula, crested, one (1) color, 3 stems  
 111F Calendula, crested, mixed colors, 3 stems  
 111G Calendula, quilled, one (1) color, 3 stems  
 111H Calendula, quilled, mixed colors, 3 stems  
 111I Calendula Collection: five different types or colors displayed in one container; eligible for the Leola Sanders Collection Award

**Calliopsis/Coreopsis:**

- 112A Calliopsis or Coreopsis, annual, daisy flowered, one (1) color, 3 sprays  
 112B Calliopsis or Coreopsis, annual, daisy flowered, mixed colors, 3 sprays  
 112C Coreopsis, perennial, single, one (1) color, 3 sprays  
 112D Coreopsis, perennial, semi-double, one (1) color, 3 stems

**Candytuft:**

- 113A Candytuft, hyacinth flowered, white, 3 spikes  
 113B Candytuft, hyacinth flowered, colored, 3 spikes  
 113C Candytuft, verberna flowered, one (1) color, 3 sprays

Please see Lot# 123, Dianthus, for Carnations.

**Celosia:**

- 114A Celosia, cristata (cockscomb), large, any color, 1 stem  
 114B Celosia, cristata (cockscomb), small to medium, one (1) color, 3 stems  
 114C Celosia, plumose (plumed), one (1) color, 3 stems  
 114D Celosia, plumose (plumed), mixed colors, 3 stems  
 114E Celosia, spicata (wheat flowered), 3 stems

**Chrysanthemums:**

- 115A Chrysanthemums, annual, one (1) color, 3 stems

**Clarkia and Godetia:**

- 116A Clarkia, one (1) color, 3 spikes  
 116B Godetia, one (1) color, 3 sprays

**Clematis: display in a covered dish as for pansies; no foliage required**

- 117A Clematis, single, named, 1 bloom  
 117B Clematis, double, named, 1 bloom

**Columbine:**

- 119A Columbine, single, one (1) color, 3 stems  
 119B Columbine, double, one (1) color, 3 sprays  
 119C Columbine, other flowered, one (1) color, 3 stems or sprays

**Cosmos:** Lots 120 A – J are eligible for the Redfield/Sprinkle Cosmos Award. Cosmos may be displayed as blooms, sprays or stems. Be sure to check Lot numbers for requirements. Cosmos are divided into two types: bi-pannatus types which are pastel colored, daisy flowered and sulphureus types which are generally double and red, orange and yellow in color. Cosmos may be displayed as stems or sprays where indicated.

**Cosmos bi-pinnatus varieties:**

- 120A Cosmos, single, large flwd (Versailles, Sensation, etc.), over 3", one (1) color, 3 stems  
 120B Cosmos, single, large flwd (Versailles, Sensation, etc., etc.), over 3", mixed colors, 3 stems  
 120C Cosmos, single, small flwd (Versailles, Sensation, etc.), up to 3", one (1) color, 3 sprays  
 120D Cosmos, single, small flwd (Versailles, Sensation, etc.), up to 3", mixed colors, 3 sprays  
 120E Cosmos, double, one (1) color, 3 stems  
 120F Cosmos, double, mixed colors, 3 stems  
 120G Cosmos, quilled, crested, etc., one (1) color, 3 stems  
 120H Cosmos, quilled, crested, etc., mixed colors, 3 stems

**Cosmos sulphureus varieties:**

- 120I Cosmos, small flowered, one (1) color, 3 stems

- 120J Cosmos, small flowered, mixed colors, 3 stems

**Dahlias:** All Dahlia lots, except Collections, are eligible for the Bob Mobley Dahlia Award. Please note special conditioning requirements. One set of leaves should be retained. Please name. All Dahlia lots will be based on 121; the exhibitor should enter based on size alone; for instance, 121A or 121MS. Lot numbers will be assigned by the Superintendent, or at her direction; for instance 121A-C-1 might be a large, yellow formal decorative.

As there are currently 795 classes of Dahlias based on color, form and size by the American Dahlia Society, it is not possible to list all the possible Lots. Any Dahlia brought for exhibition will be classified according to the American Dahlia Society classification system. If there are sufficient entries, color classes will be created.

Collections of five or more dahlias exhibited in one container are eligible for the Leola Sanders Collection Award.

**The exhibitor should note the following SIZE requirements for the number of specimens per lot:**

**AA Giant over 10"1 bloom**

**A Large over 8" to 10"1 bloom**

**B Medium over 6" to 8"1 bloom**

**BB Small over 4" to 6"3 blooms**

**BA Ball over 3.5"3 blooms**

**MB Miniature Ball over 2" to 3.5"3 blooms**

**P Pompon up to 2"3 blooms**

**MS Mignon Single up to 2"3 blooms**

**Daisies:** Lots 122 A - E will be eligible for the Bob Hamel Daisy Award.

**For Gloriosa Daisies, please see Lot 161, Rudbeckia.**

- 122A Daisies, Shasta, single, 3 stems  
 122B Daisies, Shasta, single, quilled, spooned or contorted petals (Crazy Daisy, etc.), 3 stems  
 122C Daisies, Shasta, semi-double, 3 stems  
 122D Daisies, Shasta, double, 3 stems  
 122E Daisies, other, 3 stems

Please see Lot #138, Hemerocallis for daylilies.

**Dianthus, Carnations, Pinks and Sweet Williams:**

- 123A Carnations, double (florist type), one (1) color, 3 stems  
 123B Pinks, single, one (1) color, 3 stems or sprays  
 123C Pinks, double, one (1) color, 3 stems or sprays  
 123D Sweet William, one (1) color, 3 stalks

**Delphiniums and Larkspur:**

- 124A Delphinium, standard (Pacific Giants, New Zealand Hybrids, etc.), 1 spike with foliage  
 124B Delphinium, intermediate (Yankee, Summer, etc.), 1 spike with foliage  
 124C Delphinium, dwarf, one (1) color, 3 spikes with foliage  
 124D Larkspur, one (1) color, 3 spikes with foliage

**Echinacea (Cone Flowers):**

- 125A Echinacea, single, one (1) color, 3 stems  
 125B Echinacea, double, one (1) color, 3 stems  
 125C Echinacea, dwarf, one (1) color, 3 stems  
 125D Echinacea Collection, five different colors or forms displayed in one container; eligible for the Leola Sanders Collection Award  
 126 Echinops, 3 blooms  
 127 Erigeron, 3 stems

**Eryngium:**

- 128A Eryngium, small, 3 sprays  
 128B Eryngium, large (Miss Willmott's Ghost, etc.), 1 spray

**Feverfew (Matricaria):**

- 129A Feverfew, single, 3 sprays  
 129B Feverfew, double, 3 sprays

**Flowering Cabbage and Kale:**

- 130A Flowering Cabbage, large, 1 head  
 130B Flowering Cabbage, small, 3 heads  
 130C Flowering Kale, large, 1 head  
 130D Flowering Kale, small, 3 heads

**Gaillardia: includes annual and perennial forms**

**Perennials:**

- 131A Gaillardia, single, daisy flowered, solid color, 3 stems  
 131B Gaillardia, single, daisy flowered, bi-color, 3 stems  
 131C Gaillardia, single, other flower forms (quill, etc.), 3 stems  
 131D Gaillardia, double, 3 stems

**Annals:**

- 131E Gaillardia, annual, one (1) color, 3 stems  
 131F Gaillardia, annual, mixed colors, 3 stems  
 Please see Lot # 161, Rudbeckia for Golden Glow.

Please see Lot #166, Solidago for Golden Rod

**Geraniums and Pelargoniums:**

**Geraniums:**

- 133A Geranium, single, 3 sprays  
 133B Geranium, double, 3 sprays

**Pelargoniums:**

- 133C Pelargonium, zonal, one (1) bloom, no foliage  
 133D Pelargonium, regal (Martha Washington), 1 bloom, no foliage  
 133E Pelargonium, ivy, 3 blooms, no foliage  
 133F Pelargonium, other flower form, 1 bloom, no foliage

**Gladiolus: Lots 134A – Q are eligible for the Evelyn Robertson Gladiola Award.**

Gladiolas are exhibited without foliage. A perfect spike will have all florets present, but careful removal of one spent floret is permissible. The North American Gladiolus Council classifies gladiolus by color and size of florets. Please enter by color; division by size will occur to make judging fair when there are sufficient entries. Size divisions are as follows:

- Size 100 Miniature florets under 2 1/2"  
 Size 200 Small/Miniature florets over 2 1/2" to 3 1/2"  
 Size 300 Decorative florets over 3 1/2" to 4 1/2"  
 Size 400 Large florets over 4 1/2" to 5 1/2"  
 Size 500 Giant florets over 5 1/2"

- 134A Gladiola, white, or white with marks, 1 spike  
 134B Gladiola, green, or green with marks, 1 spike  
 134C Gladiola, yellow, or yellow with marks, 1 spike  
 134D Gladiola, cream, or cream with marks, 1 spike  
 134E Gladiola, orange, or orange with marks, 1 spike  
 134F Gladiola, salmon, or salmon with marks, 1 spike  
 134G Gladiola, pink, or pink with marks, 1 spike  
 134H Gladiola, red, or red with marks, 1 spike  
 134I Gladiola, black red or black red with marks, 1 spike  
 134J Gladiola, rose, or rose with marks, 1 spike  
 134K Gladiola, black rose, or black rose with marks, 1 spike  
 134L Gladiola, lavender, or lavender with marks, 1 spike  
 134M Gladiola, purple, or purple with marks, 1 spike  
 134N Gladiola, violet, or violet with marks, 1 spike  
 134O Gladiola, smoke, or smoke with marks, 1 spike  
 134P Gladiola, tan, or tan with marks, 1 spike  
 134Q Gladiola, brown, or brown with marks, 1 spike  
 134R Gladiolus Collection: 5 or more spikes of the same size/color displayed in one container; eligible for the Leola Sanders Collection Award.  
 134S Gladiolus Collection: 5 or more spikes of the same size; different colors displayed in one container; eligible for the Leola Sanders Collection Award.

**Grasses, Ferns, Ornamental Foliage Plants, Evergreen and Deciduous Branches and Water Plants: Please name all exhibits in these lots.****Ornamental Grasses:** no bloom required.

- 135A Ornamental Grass, large, 3 stems  
 135B Ornamental Grass, small to medium, 5 stems

**Ferns:**

- 135C Ferns, large, 1 frond  
 135D Ferns, small, 3 fronds

**Ornamental Foliage Plants:**

- 135E Hosta, large leaf, 1 leaf  
 135F Hosta, medium leaf, 1 leaf  
 135G Hosta, small, 1 leaf  
 135H Ornamental Leaf, green, 3 stems or leaves  
 135I Ornamental Leaf, variegated, 3 stems or leaves  
 135J Ornamental Leaf, colored, other than silver, 3 stems or leaves  
 135K Ornamental Leaf, silver, 3 stems or leaves

**Evergreen and Deciduous Branches:**

- 135L Evergreen, standard, named, limited to 24", one (1) branch  
 135M Evergreen, small or miniature, named, limited to 6", one (1) branch  
 135N Deciduous, named, limited to 12", one (1) branch  
 135O Deciduous, fruiting, named, limited to 12", one (1) branch

**Water Plants:**

- 135P Waterlily or Lotus, 1 bloom  
 135Q Floating water plants, 1 bunch, named, displayed in an open container  
 135R Submerged water plants, 1 bunch, named, displayed in an open container

**Gypsophila: DO NOT TRANSPORT DRIED PERENNIAL BABY'S BREATH WITH SEED; IT IS A NOXIOUS WEED.**

- 136A Gypsophila, annual, one (1) color, 3 sprays  
 136B Gypsophila, perennial, single or double, **FRESH ONLY**, 5 sprays

**Helianthus and Heliopsis:** Perennial Sunflowers; for annual Sunflowers see Lot 169.

- 137A Helianthus or Heliopsis, daisy flowered, single, 3 stems  
 137B Helianthus or Heliopsis, double, 3 stems

**Hemerocallis:** No foliage required; please contact Superintendent for special exhibition care.

- 138A Daylily, single, (1) scape or one (1) bloom  
 138B Daylily, double, 1 scape or one (1) bloom

**Heuchera, Heucherella and Tiarella:** Coral Bells may be exhibited by bloom or foliage

- 139A Coral Bells, any color, 3 bloom spikes

**Hollyhocks, Hibiscus, Mallows and Malvas:** Hollyhocks need special conditioning; please refer to the Introduction for specifics.

- 140A Hollyhock, single, 1 spike, with foliage  
 140B Hollyhock, double, 1 spike, with foliage  
 140C Hibiscus, perennial, 1 bloom  
 140D Mallow, 1 spike with foliage  
 140E Malva, 3 spikes with foliage  
 141 Lavatera, one (1) color, 3 sprays

**Liatris:**

- 142A Liatris, purple, 1 spike  
 142B Liatris, white, 1 spike

**Lilies: Lots 143A-D are eligible for the Carl Hollensteiner Lily Award.**

- 143A Lily, bowl, 1 stem  
 143B Lily, reflex, 1 stem  
 143C Lily, trumpet, 1 stem  
 143D Lily, upright, 1 stem

**Marigolds:** Lots 144A - are eligible for the Everett Dirksen Marigold Award. One set of leaves must be retained.

There are three common flower types of marigolds (Tagetes species), so-called African (T. erecta) called American in these lots; French (T. patula), and Signet (T. tenuifolia). All Tagetes species are from Mexico in spite of their common names. **Giant and large flowered American types** are large, over 2 1/2", and have double carnation style blooms. There are rare large flowered singles. **French flower types** are smaller, usually from 1-2 1/2"; flower types are varied, but have the following basic forms: double; semi-double; and single. **Semi-doubles** are further divided into two forms: crested, and anemone. **Double** flowers have fully double, rounded centers; semi-double crested have mounded, full centers which are distinctly crested; semidouble anemone types have flat, recessed centers. **Singles** have one row of petals. Signets are very small lowered singles.

- 144A Marigold, giant, over 3 1/2", one (1) color, 3 blooms  
 144B Marigold, giant, over 3 1/2", mixed colors, 3 blooms  
 144C Marigold, large, 2 1/2 - 3 1/2", one (1) color, other than white, 3 blooms  
 144D Marigold, large, 2 1/2 - 3 1/2", mixed colors, 3 blooms  
 144E Marigold, large, over 2 1/2", white, 3 blooms  
 144F Marigold, small, double, one (1) color, 3 blooms  
 144G Marigold, small, double, mixed colors, 3 blooms  
 144H Marigold, small, semi-double, crested, one (1) color, 3 blooms  
 144I Marigold, small, semi-double, crested, mixed colors, 3 blooms  
 144J Marigold, small, semi-double, anemone-flowered, one (1) color, 3 blooms  
 144K Marigold, small, semi-double, anemone-flowered, mixed colors, 3 blooms  
 144L Marigold, small, single, one (1) color, 3 blooms  
 144M Marigold, small, single, mixed colors, 3 blooms  
 144N Marigold, Signet, one (1) color, 3 sprays  
 144O Marigold, Signet, mixed colors, 3 sprays  
 144P Marigold, largest specimen, one (1) bloom

**Nasturtiums:**

- 145A Nasturtiums, single, one (1) color, 3 blooms  
 145B Nasturtiums, single, mixed colors, 3 blooms  
 145C Nasturtiums, double, one (1) color, 3 blooms  
 145D Nasturtiums, double, mixed colors, 3 blooms

**Nicotiana (Flowering Tobacco):**

- 146A Nicotiana, one (1) color, 3 sprays  
 146B Nicotiana, mixed colors, 3 sprays

**Pansies, and Violas:** Lots 148A - I are eligible for the Rev. H.N. Tragitt Pansy Award.**Pansies and Violas have special exhibition requirements.** Use the following directions:

Display blooms in a shallow, covered dish. Fill the dish with water. Use plastic wrap or the new selfsticking wrap secured to the outside and bottom of the bowl to cover the top of the bowl (the English use velvet to cover the exhibition bowls). Cut small slits in the cover and insert the stems of the blooms into the water in the bowl so that the flowers will lay flat on top of the cover. Be very careful to make sure the stems stay in the water, as they have a tendency to float to the surface and dry out.

**The difference between pansies and violas is the shape of the flower.****Exhibition pansies should be round; violas are more butterfly shaped.**

- \*148A Pansy, giant, single, over 3", one (1) color, 3 blooms  
 \*148B Pansy, giant, single, over 3", mixed colors 3 blooms  
 \*148C Pansy or viola, single under 3", one (1) color, 3 blooms  
 \*148D Pansy or viola, single, under 3", mixed colors, 3 blooms  
 \*148E Pansy, ruffled or double, over 2", one (1) color, 3 blooms  
 \*148F Pansy, ruffled or double, over 2", mixed colors, 3 blooms  
 \*148G Violas or miniature pansies, one (1) color, 5 blooms  
 \*148H Violas or miniature pansies, mixed colors, 5 blooms  
 \*148I Pansy or Viola, largest specimen, 1 bloom  
 149 Perovskia (Russian Sage), 1 spray

**Petunias and Calibrochoas:** Lots 150A – J are eligible for the Best Petunia Award.

Calbrochoa is the genus name for the Million Bells "mini petunias"; while closely related to petunias they are a separate genus. Their similarity in flower form to petunias allows for display with them in these lots. There is a rarer double flowered form which is not readily available.

Grandiflora petunias should be displayed as for pansies; please see that Lot for the directions.

- 150A Calbrochoa (mini-petunias), (Million Bells, etc.), single, 1 – 1 ¼", one (1) color, 3 sprays
- 150B Petunia, multiflora, single, 2 – 3 ½", one (1) color, 3 sprays
- 150C Petunia, multiflora, single, 2-3 ½", mixed colors, 3 sprays
- 150D Petunia, multiflora, double, 2-3 ½", one (1) color, 3 sprays
- 150E Petunia, multiflora, double, 2-3 ½", mixed colors, 3 sprays
- 150F Petunia, grandiflora, single, over 3 ½", one (1) color, 3 blooms, displayed as for pansies
- 150G Petunia, grandiflora, single, over 3 ½", mixed colors, 3 blooms, displayed as for pansies
- 150H Petunia, grandiflora, double, over 3 ½" one (1) color, 3 blooms, displayed as for pansies
- 150I Petunia, grandiflora, double, over 3 ½", mixed colors, 3 blooms, displayed as for pansies
- 150J Petunias, Giants of California, includes hybrids, 3 blooms, displayed as for pansies

**Phlox:** Lots 151A - D are eligible for the Rose Swetish Phlox Award.

- 151A Phlox, perennial, globe flowered, 1 head
- 151B Phlox, perennial, other flowered, 1 head
- 151C Phlox, annual, globe flowered, one (1) color, 3 sprays
- 151D Phlox, annual, star-flowered, one (1) color, 3 sprays

**Pinks: please see Lot #123 Dianthus.**

**Poppies:** Lots 152A is eligible for the Flanders Field Poppy Award. Lots B – D are eligible for the Harriet Watkins Poppy Award. Poppies need special conditioning. Please see the Introduction for methods. California poppies have special exhibition requirements.

- 152A Poppies, single, red, 5 stems
- 152B Poppies, single, 5 stems
- 152C Poppies, California (Eschscholzia), single or semi-double, 5 stems.
- 152D Poppies, double, 5 stems

**Portulaca:**

- 153A Portulaca, one (1) color, 3 stems
- 153B Portulaca, mixed colors, 3 stems

**Roses:** Lots 154A – H; 155A – H; 156A – H; 157A – H & 158 & 159 ~ eligible for the Best Rose Award. Foliage must be retained, except for rose bowls. Unless the specimen is named it will not be eligible for the Best Rose Award.

**Floribunda Roses:**

- 154A White or ivory, 1 spray
- 154B Yellow, light to dark, 1 spray
- 154C Orange, light to dark, 1 spray
- 154D Pink, light to dark, 1 spray
- 154E Red, light to dark, 1 spray
- 154F Bi-colors, 1 spray
- 154G Blends, 1 spray
- 154H Blue, lavender or mauve, 1 spray

**Grandiflora Roses:**

- 155A White or ivory, naturally grown or disbudded, 1 stem or 1 spray
- 155B Yellow, light to dark, naturally grown or disbudded, 1 stem or 1 spray
- 155C Orange, light to dark, naturally grown or disbudded, 1 stem or 1 spray
- 155D Pink, light to dark, naturally grown or disbudded, 1 stem or 1 spray
- 155E Red, light to dark, naturally grown or disbudded, 1 stem or 1 spray
- 155F Bi-colors, 1 spray, naturally grown or disbudded, 1 stem or 1 spray
- 155G Blends, 1 spray, naturally grown or disbudded, 1 stem or 1 spray
- 155H Blue, lavender or mauve, naturally grown or disbudded, 1 stem or 1 spray

**Hybrid Tea Roses:**

- 156A White or ivory, 1 stem
- 156B Yellow, light to dark, 1 stem
- 156C Orange, light to dark, 1 stem
- 156D Pink, light to dark, 1 stem
- 156E Red, light to dark, 1 stem
- 156F Bi-colors, 1 stem
- 156G Blends, 1 stem
- 156H Blue, lavender or mauve, 1 stem

**David Austin English Roses:**

- 157A White or ivory, naturally grown or disbudded, 1 stem or 1 spray
- 157B Yellow, light to dark, naturally grown or disbudded, 1 stem or 1 spray
- 157C Orange, light to dark, naturally grown or disbudded, 1 stem or 1 spray
- 157D Pink, light to dark, naturally grown or disbudded, 1 stem or 1 spray
- 157E Red, light to dark, naturally grown or disbudded, 1 stem or 1 spray
- 157F Bi-colors, 1 spray, naturally grown or disbudded, 1 stem or 1 spray
- 157G Blends, 1 spray, naturally grown or disbudded, 1 stem or 1 spray

**Miniature Roses:**

- 158A White or ivory, naturally grown or disbudded, 1 stem or 1 spray
- 158B Yellow, light to dark, naturally grown or disbudded, 1 stem or 1 spray
- 158C Orange, light to dark, naturally grown or disbudded, 1 stem or 1 spray
- 158D Pink, light to dark, naturally grown or disbudded, 1 stem or 1 spray

- 158E Red, light to dark, naturally grown or disbudded, 1 stem or 1 spray
- 158F Bi-colors, 1 spray, naturally grown or disbudded, 1 stem or 1 spray
- 158G Blends, 1 spray, naturally grown or disbudded, 1 stem or 1 spray

**Other Roses:**

159 Any other Rose (climbers, hedge, shrub, old garden rose, etc.), 1 stem or 1 spray

**Roses Specially Displayed:**

- 160A Rose Bowl: must be displayed so that the roses do not float. A set of leaves from them must be displayed, but do not add any other plant material. This is not an arrangement. Not eligible for the Best Rose Award.
- 160B Rose Collection: five different kinds, colors, etc., displayed in one container; eligible for the Leola Sanders Collection Award. Not eligible for the Best Rose Award.

**Rudbeckias:**

- 161A single, gold and/or yellow, 3 stems
- 161B single, other colors, 3 stems
- 161C double, gold and/or yellow, 3 stems
- 161D double, other colors, 3 stems
- 161E Golden Glow (Rudbeckia laciniata), 3 sprays
- 161F Rudbeckia, 'Green Wizard', 3 stems
- 162 Salpiglossis, any color, 1 spray

**Salvias:**

- 163A Salvias, perennial, 3 spikes
- 163B Salvias, annual, 3 spikes

**Scabiosa:**

- 164A Scabiosa (Sweet Sultan), annual, except stellata, 5 stems
- 164B Scabiosa, stellata, 3 stems
- 164C Scabiosa perennial, any color, 3 stems

**Snapdragons:** Lots 165A- E are eligible for the Catherine Chaffin Snapdragon Award.

- 165A Snapdragons, single flowered, 1 spike
- 165B Snapdragons, double flowered, 1 spike
- 165C Snapdragons, novelty flowered, 1 spike
- 165D Snapdragons, dwarf and/or mini) one (1) color, 3 spikes
- 165E Snapdragons, dwarf and/or mini), mixed colors, 3 spikes
- 165F Snapdragon Collection: five or more colors or types displayed in one container; eligible for the Leola Sanders Collection Award.

166 Solidago (Golden Rod), 3 sprays

**Strawflowers and Other Everlastings:** Please enter this growing season's specimens. May be displayed as fresh or dry.

- 167A Acrolinum (Paper Daisies), 3 stems
- 167B Ammobium (Winged Everlasting), 3 stems
- 167C Chinese Lanterns, 3 sprays
- 167D Gomphrena, 3 stems
- 167E Gourds, 1 large or 3 small (need not be fully dried)
- 167F Money Plant (Lunaria), 3 sprays
- 167G Ornamental Corn, large, small or mini, 3 dried cobs
- 167H Statice, annual, one (1) color, 3 sprays
- 167I Statice, annual, mixed colors, 3 sprays
- 167J Statice, perennial, 3 sprays
- 167K Strawflowers, one (1) color, 3 stems
- 167L Strawflowers, mixed colors, 3 stems
- 167M Xeranthemum, any color, 5 stems
- 167N Other everlastings, 3 specimens
- 167O Collection of Everlastings: at least 5 different everlastings displayed with or in one container; eligible for the Leola Sanders Collection Award.

**Stocks:**

- 168A Stocks, double, one (1) color, 3 spikes
- 168B Stocks, double, mixed colors, 3 spikes
- 168C Stocks, single, one (1) color, 3 spikes

**Sunflowers:** Lots 169A – P are eligible for the Dean Barnes Sunflower Award. These lots are for Decorative sunflowers; those grown primarily for seed should be entered in Horticulture, Department J. No foliage required. **Each Sunflower stem shall display only 1 bloom, remove buds from stems. This is for all Sunflower Lots 169A-P.**

- 169A Sunflower, giant, single, over 8", 1 bloom
- 169B Sunflower, giant, double, over 8", 1 bloom
- 169C Sunflower, large, single, 6-8", yellow or gold, 3 blooms
- 169D Sunflower, large, single, 6-8", green or white, 3 blooms
- 169E Sunflower, large, single, 6-8", red, bronze or purple, 3 blooms
- 169F Sunflower, large, single, 6-8", bi- or tri-color, 3 blooms
- 169G Sunflower, large, double, any color, 3 blooms
- 169H Sunflower, medium, single, 4-6", yellow or gold, 3 blooms
- 169I Sunflower, medium, single, 4-6", green or white, 3 blooms
- 169J Sunflower, medium, single, 4-6", red, bronze or purple, 3 blooms
- 169K Sunflower, medium, single, 4-6", bi- or tri-color, 3 blooms
- 169L Sunflower, medium, double, any color, 3 blooms
- 169M Sunflower, small, single, under 4", yellow or gold, 5 blooms
- 169N Sunflower, small, single, under 4", green or white, 5 blooms
- 169O Sunflower, small, single, under 4", red, bronze or purple, 5 blooms
- 169P Sunflower, small, single, 6-8", bi- or tri-color, 5 blooms



**Sweet Peas:** Lots 170A – D are eligible for the Esther Hamel Sweet Pea Award. Color classes will be created for 170A if there are sufficient entries. No foliage required.

- 170A Sweet Peas, annual, one (1) color, 3 sprays
- 170B Sweet Peas, annual, mixed colors, 3 sprays
- 170C Sweet Peas, perennial, one (1) color, 3 sprays
- 170D Sweet Peas, perennial, mixed colors, 3 sprays
- 170E Sweet Pea Collection: at least five colors displayed in one container; eligible for the Leola Sanders Collection Award.

**Verbena:**

- 171A Verbena, one (1) color, 3 specimens
- 171B Verbena, mixed colors, 3 specimens
- 171C Veronica, 3 stems

**Zinnia: any flower form may be entered in Lots 172A – C; ball only in 172D and E.**

- 172A Zinnia, over 4", one stem
- 172B Zinnia, 2-4", one (1) color, 3 stems
- 172C Zinnia, 2-4", mixed colors, 3 stems
- 172D Zinnia, ball flowered, under 2", one (1) color, 3 stems
- 172E Zinnia, ball flowered, under 2", mixed colors, 3 stems
- 172F Zinnia, single, one (1) color, 3 stems
- 172G Zinnia, single, mixed colors, 3 stems

- 172H Zinnia Collection, at least 5 colors and/or types displayed in one container; eligible for the Leola Sanders Collection Award

**Other Flowers:**

- 173A Any Other Annual not listed, 3 stems, sprays, blooms or 1 spike
- 173B Any Other Perennial not listed, 3 stems, sprays, blooms or 1 spike
- 173C Any Other Biennial, not listed, 3 stems, sprays, blooms or 1 spike

**Collections:** All Collections in Lot # 174, below, as well as the collections listed in lots above, are eligible for the Leola Sanders Collection Award. ALL SPECIMENS MUST BE NAMED TO BE ELIGIBLE FOR THE COLLECTION AWARD. See Lots 100G, Achilleas; 102D, African Daisies; Lot 104G, Amaranthus; 105 R, Annual Asters; 105U, Perennial Asters; 111I, Calendulas; 125D, Echinaceas; 135R and S, Gladiolus; 160B, Roses; 165F, Snapdragons; 167O, Everlastings; 170E, Sweet Peas and 172H, Zinnias for other eligible collections.

- 174A Best Collection of Named Annuals, 5 different stems, sprays or spikes exhibited in one container
- 174B Best Collection of Named Perennials, 5 different stems, sprays or spikes exhibited in one container.
- 174C Best Collection of Named Biennials, 5 different stems, sprays, or spikes exhibited in one container
- 174D Best Collection of Named Annuals, Perennials and/or Biennials, 5 different stems, sprays or spikes in one container.

## DIVISION II - CONTAINER GARDENING

Plants entered in this Division are judged on their overall condition as well as the condition and cleanliness of the container and water or drip-pan. All containers must have a water-pan supplied. **Plants should be groomed, cleaned of spent blossoms or foliage, pot rims scrubbed and clean, and salt buildup removed.** Double crowns in specimen plant such as African Violets are a serious exhibition fault.

Plant exhibitions are like beauty contests: each contestant should be shown off to its very best advantage. Grooming is the chief exhibition technique and requires basically only time to accomplish. **No Leaf Polish should be used.**

Regular care: proper light, fertilizer and water are essential to make a plant come to its full potential. Questions about culture should be referred to the Superintendents.

This Division is limited to one plant per container, unless excepted. It is limited to plants grown for their flowers, fruit and/or foliage.

Vegetable food plants are excluded. Container size limit is 24" diameter, unless excepted. Hanging plants are allowed in the appropriate lot. Heights listed mean tallness at maturity.

### Part 1: Flowering/Fruiting Plants

- 200 Abutilon (Flowering Maple)
- 201 Acalypha (Chenille Plant)

**African Violets:**

Please see Lot 211

- 202 Anthurium, multiples allowed, esp. for miniatures
- 203 Aphelandra (Zebra Plant)

**Begonias:**

Blooming fibrous-rooted types.

- 204A Rieger hybrids
- 204B Wax leafed (semperflorens and hybrids)
- 204C Other fibrous-rooted flowering begonia

**Bromeliads:**

Should be in flower to show maturity; succulent types should be entered in Part 3 of Division II.

- 205A Bromeliads, terrestrial
- 205B Bromeliads, epiphytic
- 205C Bromeliad Collection: at least 5 different kinds of either type displayed in or on one container
- 205D Bromeliad, not in bloom
- 206 Bougainvillea

**Bulbs, Corns and Tubers:**

**Multiple specimens allowed unless restricted.**

- 207A Begonia, tuberous, large flowered, any form, one plant
- 207B Begonia, tuberous, multiflora, any form
- 207C Begonia, tuberous, hanging, any form
- 207D Cyclamen, one plant
- 207E Freesias
- 207F Oxalis, all colors
- 207G Shamrocks
- 207H Any other flowering bulb not listed, must be named
- 207I Any other flowering corn not listed, must be named
- 207J Any other flowering tuber not listed, must be named
- 208 Cuphea (cigar plant)

**Dwarf Fruit Trees:**

**Need not be in flower or fruit.**

- 209A Avocado
- 209B Citrus
- 209C Coffee

- 209D Pomegranate
- 210 Fuschia

**Gesneriads:**

*African Violets*

*The best entry in Lot 211A-R is eligible for the Robertson Memorial African Violet Award. Only one plant per container except for trailing types. Add an "M" to the lot number to enter an exhibit as a miniature. 211A-M would be an entry for a miniature single bi-color. Please name.*

- 211A Bi-color, single
- 211B Bi-color, double
- 211C Blue, single
- 211D Blue, double
- 211E Orchid, single
- 211F Orchid, double
- 211G Pink, single
- 211H Pink, double
- 211I Purple, single
- 211J Purple, double
- 211K Red, single
- 211L Red, double
- 211M White, single
- 211N White, double
- 211O Trailing, standard, any color
- 211P Trailing, miniature
- 211Q Variegated leaf, any flower color
- 211R Any African violet not listed

*Other Gesneriads*

- 212A Achimenes (nut orchids), double or single
- 212B Aeschynanthus (lipstick plants)
- 212C Alsobia (lace-flower vine)
- 212D Columnea
- 212E Episcas (Flame Violets)
- 212F Florist gloxinia (Sinningia)
- 212G Nematanthus (Goldfish plant)
- 212H Smithiana (Temple bells)
- 212I Streptocarpus (Cape Primroses)
- 212J Any other gesneriad except African violets
- 213 Hoya, any form

**Impatiens:**

- 214A Impatiens, plain leaf, single
- 214B Impatiens, plain leaf, double
- 214C Impatiens, New Guinea hybrids
- 215 Justicia (shrimp plant)
- 216 Orchids, any

**Pelargoniums (Geraniums):**

See Part 2: Foliage Plants for those grown for their leaves

- 217A Zonal (common geranium)
- 217B Regal (Martha Washington)
- 217C Ivy geraniums
- 217D Miniature and dwarf forms
- 218 Spathiphyllum (Peace lily)
- 219 Any other Flowering Plant not listed
- 220A Best Collection of Flowering Plants, at least 5 in separate containers
- 220B Best Planter of Flowering Plants, at least 3 species or varieties in one container.

## Part 2: Foliage Plants

This part is for plants which are grown primarily for their foliage; it does not include plants grown for their flowers or fruit which are not in bloom. More than one plant per container allowed unless excepted.

- 230 Aglaonema (Chinese Evergreen)
- 231 Alocasias
- 232 Anthuriums (foliage types only)
- 233 Araucaria (Norfolk Island Pine), one plant only.
- 234 Asparagus Ferns
- 235 Aspidistra (Cast Iron Plant)
- 236 Aucuba (Japanese Gold Dust Plant)

**Begonias:****Foliage types (flowers incidental)**

- 237A Cane types (angel wings, etc.)
- 237B Rhizomatous (Iron Cross, Eyelash, beefsteak, lettuce leaf, etc.)
- 237C Rex begonia
- 237D Other leaf begonia

**Bulbs, corms or tubers:**

- 238A Caladium
- 238B Ledebouria (Silver squill or Scilla violacea)
- 238C Ornithogalum (Pregnant onion)

**Brassaias (Schefflera or Queensland Umbrella Tree):**

- 239A Brassia (Umbrella tree, Schefflera)
- 239B Heptapleurum arboricola (miniature Schefflera)
- 240A Coleus
- 240B Calathea (peacock plant)

**Spider Plants:**

- 241A Chlorophytum, green leaves
- 241B Chlorophytum, variegated leaves
- 242 Crotons
- 243 Cordyline (Hawaiian Ti)
- 244 Cycas

**Dieffenbachia (Dumb-cane):**

- 245A Dieffenbachia, standard (limit of 24" container)
- 245B Dieffenbachia, dwarf
- 246 Dizygotheca (False Aralia)

**Dracaenas:**

- 247A Dracena, green narrow leaved forms
- 247B Dracena, variegated narrow leaved forms
- 247C Dracena, green wide leaved forms
- 247D Dracena, variegated wide leaved forms

**Pothos or Devil's Ivy:**

- 248 Epipremnum
- 249 Fatsia (Japanese Aralia)

**Ferns:**

- 250A Ferns, upright forms, please name
- 250B Ferns, hanging forms, please name

**Ficus:****Tree forms.**

- 251A Ficus, shrubby forms
- 251B Ficus, tree forms
- 251C Ficus, climbing forms
- 252 Fittonia (Nerve plant)
- 253 Gynura (Velvet or purple passion plant)
- 254 Hypoestes (Pink polka dot plant)

**Iresines (Beefsteak or bloodleaf plant):**

- 255A Iresine, red leaved
- 255B Iresine, variegated leaves

**Ivies: Enter ivy topiaries in Part 4.**

- 256A Cissus (Kangaroo Ivy; Begonia Tree-bine; Grape Ivy)
- 256B x Fatsy (Tree Ivy)
- 256C German or Baltic Ivy, green leaved
- 256D German or Baltic Ivy, variegated leaves
- 256E Hedera (English ivies), green leaved
- 256F Hedera (English ivies), variegated leaves
- 256G Swedish Ivy (Plectranthus, Candle Plant), self-colored leaves,
- 256H Swedish Ivy (Plectranthus, Candle Plant), variegated leaves
- 257 Maranta (Prayer Plants)
- 258 Monstera (Swiss Cheese plant)

**Palms:**

- 259A Palms, large, limit of 24" container
- 259B Palms, small

**Pelargoniums (Geraniums):****Foliage types:**

- 260A Fancy leaved forms
- 260B Scented
- 260C Collection of Fancy or Scented, at least 5 types in separate containers.

**Peperomia:**

- 261A Peperomia, green clumping types
- 261B Peperomia, variegated clumping types
- 261C Peperomia, green trailing types
- 261D Peperomia, variegated trailing types
- 261E Peperomia, green upright types
- 261F Peperomia, variegated upright types
- 261G Best Collection of Peperomias, at least 5 different types in separate containers
- 261H Best Planter of Peperomias, at least 3 different types in one container
- 262 Philodendrons (containers limited to 24" in diameter)

**Pilea:**

- 263A Pilea, creeping forms (Creeping Charlies)
- 263B Pilea, upright forms (Aluminum plant, P.I. 'Moon Valley, Silver Tree, etc.)

**Polyscias (Aralias):**

- 264A Polyscia, green leaved forms
- 264B Polyscia, variegated leaved forms
- 264C Ming Aralia
- 265 Radermachia (China Doll)
- 266 Saxifrage (Strawberry geranium/strawberry begonia)

**Spiderworks (Wandering Jews):**

- 267A Callisia (Wandering inch plant)
- 267B Gibasis (Tahitian Bridal Veil)
- 267C Rhoec (Moses-in-the-cradle)
- 267D Setcreasea (Purple-heart)
- 267E Wandering Jew, green leaves
- 267F Wandering Jew, variegated leaves
- 268 Synonymiums (Arrowhead plants)
- 269 Tolmiea (Piggyback plant)
- 270 Yuccas

**Collections:**

- 272A Best Collection of Foliage Plants, at least 5 different  
genuses in separate containers, named
- 272B Best Planter of Foliage Plants, at least 3 different genuses  
in a single container, named.

**Part 3: Cacti and Succulents**

**ONLY ONE ENTRY PER LOT NUMBER.** Cacti and succulents are very similar types of plants which have adapted to drought in whole or in part of their life cycle. It is useful to know that all cacti are succulents but not all succulents are cacti. They are differentiated by the presence or absence of areoles, which are foreshortened branches. Little tufts of hairs, bristles or spines grow from these joints, which give rise to the flowers. All cacti have areoles; no succulents have them.

**Desert Cacti:**

- 300 Cylindrical shape  
301 Candelabra shape  
302 Columnar shape  
303 Hanging  
304 Clustering  
305 Star shape  
306 Chinned globe  
307 Globular shape  
308 Spherical shape  
309 Pincushion shape  
310 Other

**Jungle or Epiphytic Cacti: (Need not be in bloom to compete)**

- 311 Epiphyllums (Orchid cacti)  
312 Rhipsalidopsis (Easter cactus)  
313 Rhipsalis (Drunkard's Dream)  
314 Schlumbergera (Christmas or Thanksgiving cactus)

**Collections and Planters of Cacti and/or Other****Succulents****Collections:**

- 315 Collection (Desert types), at least 5 different  
types in separate containers
- 316 Collection (Jungle types), at least 5 different  
types in separate containers
- 317 Collection of Succulents, at least 5 different  
types in separate containers
- 318 Collection of Cacti and Succulents, at least 5  
different types in separate containers

**Planters:**

- 319 Planter of Desert Types, at least 3 different  
types in one container
- 320 Planter of Succulents, at least 3 different types  
in one container
- 321 Planter of Cacti and Succulents, at least 3  
different types in one container

**Succulents:**

- 322 Pregnant Onion  
323 Adenium (Desert Roase)  
324 Aeonium  
325 Agave  
326 Aloe  
327 Bromeliads (succulent species)  
328 Starfish  
329 Ponytail Palm  
330 Ceropegia (Rosary Vines) Please hang or  
provide tray to stems of pendant kinds.  
331 Jade Tree  
332 Euphorbia  
333 Haworthia  
334 Kalanchoe  
335 Living Stones and Lithiops  
336 Pleiospilos (Living Rock)

**Sansevieria: (Mother-in-law-tongue)**

- 337 Sansevieria, green leaves  
338 Sansevieria, variegated leaves  
339 Sansevieria, rosette shaped leaves

- 340 Sedum, upright form, self-colored leaves  
341 Senecio, pendant (String of Beads)  
342 Any other Succulent

**Part 4: Special Culture Plants, Outdoor Planters and Yards**

Plants entered in this part should reflect some special contrived growing method which features, alters, or accentuates some natural characteristic, or which are grown together for aesthetic effect for outdoor beauty.

**Special Hanging Plants**

- 400 Flowering  
401 Foliage, green  
402 Foliage, variegated  
403 Hanging Indoor Planter, at least 3 kinds in one container

**Specialty Plants**

- 405 Topiary  
407 Bonsai

### Indoor Container Gardens

- 410 Bottle Garden, one container under 24 inches
- 411 Dish Garden, one container under 10 inches
- 412 Terrarium, may be partially open
- 413 Scene, limited to 24 inches or smaller, may include manmade objects

### Outdoor Containers and Planters

- 414 Outdoor planter, under 12 inches, foliage plants predominating
- 415 Outdoor planter, under 12 inches, flowering plants predominating
- 416 Outdoor planter, over 12 inches and under 24 inches, foliage plants predominating
- 417 Outdoor planter, over 12 inches and under 24 inches, flowering plants predominating
- 418 Outdoor planter, over 24 inches, foliage plants predominating
- 419 Outdoor planter, over 24 inches, flowering plants predominating

### Yards

#### 420 Best Yard

\*Lot 420 is eligible for the Paul Boetticher Award. Entries limited to the metro Dillon area. Pictures of the yard are necessary for display at the Fair. Yards will be judged on Wednesday. Efforts will be made to contact entrants so they can be present to answer judges' questions; however it is not mandatory for the owner to be present at the judging. If an entered yard cannot be accessed safely, it will not be judged.

## Division III - Artistic Design

### General Design Information:

Plant materials need not be grown by the exhibitor; all materials must be properly conditioned. Artistic design results from the interaction of the principles of design with the elements of design. Design principles are similar to art principles: Balance, Dominance, Contrast, Rhythm, Proportion and Scale. Design elements are: Line, Space, Form, Pattern, Color, Texture and Size. The exhibitor brings individual creativity and expression to the plastic organization of components, resulting in designs of beauty, harmony, and distinction.

Creative and Tradition designs are permitted in all lots not specifically limited to one or the other design types. Creative and Traditional designs are classified according to National Garden Club criteria. The Superintendent reserves the right to move any and all designs to assist in the judging process. An exhibitor should check before judging to make sure that the design is presented as intended. Pre-registration for hanging designs and those designs which need a power source is appreciated; the Superintendent should be notified of any Functional Table designs in order to properly stage them.

Accessories are permitted in all lots unless specifically prohibited and are required in some. Utensils should NOT be used as an accessory. Backgrounds are permitted in all designs where appropriate. Small and miniature designs are meant to be viewed at the Judges' eye level and will be staged to best exhibit the designs.

Containers are the bases for designs; and since they are an integral part of the design, all principles and elements apply. In general, avoid using white vases. They draw the eye away from the design and the focus is left on the white container. The exception here would be Lot 507, Arrangement in white, use white container. The newest trend in design is container less designs which rely on construction for stability and often use tubes for water or use hardy plant materials which will not readily dry out.

## DIVISIONS IN DESIGN

In order to create interest in the Design Division, it is divided into Youth and Adult Sections. Sections are further divided into NOVICE, INTERMEDIATE AND EXPERIENCED levels.

### Adult Divisions:

**Novice Designer:** any person, 18 and older, who is a first-time entrant in the Design Division at the Beaverhead County Fair or a person who has not won more than two (2) blue ribbons in the Design Division at the Beaverhead County Fair.

**Intermediate Designer:** any person, 18 and older, who has entered the Design Division at the Beaverhead County Fair in prior years and who has won two (2) or more blue ribbons in the Design Division.

**Experienced Designer:** any person, 18 and older, who has attended flower design or Flower Show School or served as a judge at a fair or standard flower show.

\*The Superintendent keeps a record of the blue ribbons won by exhibitors; if the exhibitor has questions, please inquire. When entering the exhibitor should designate the entry with the appropriate designation: N, I or E, following the lot number.

### **Youth Divisions:**

Youth entries in design are not restricted to any Lots, but are specially designated in Lots 503 –506. Youth entries should be designated by a Y and the current age of child. Please show age on the top right of entry tag. For example, "Y8" would be written for an eight-year-old exhibitor.

### **Awards in the Design Division:**

All lots allowing dried materials in the design are eligible for the Louise Riley Dried Arrangement Award. All lots designated with an "E" following the Lot Number are eligible for the Best of Show Arrangements, Experienced; all lots designated with an "I" following the Lot Number are eligible for the Best of Show Arrangements, Intermediate; all lots designated with an "N" are eligible for the Best of Show Arrangements, Novice. Lots 554 and 555 inclusive are eligible for the Esther Speich Corsage/Boutonniere Award.

### **Arrangements Featuring Line and Form:**

#### **Designers' choice of materials.**

#### **For Grades 10-12 and Adults:**

- 500 Line Arrangement
- 501 Mass Arrangement
- 502 Line-Mass Arrangement

#### **For Youth ONLY, Grades K-9:**

- 503Y- Three Flowers in a Vase (Line Arrangement)
- 504Y- Flowers in a Basket (Mass Arrangement)
- 505Y- Flowers with/in a Toy (Line-Mass Arrang.)
- 506Y- Flowers in a Vase (Line-Mass Arrangement)

### **Arrangements Featuring Color: No accessories; fresh flowers only.**

- 507 Arrangement in white: use white container, foliage need not be white
- 508 Monochromatic arrangement: different tints and tones of one hue; foliage allowed
- 509 Arrangements featuring a spilt complement

### **Arrangements Featuring Size:**

Three Inch Arrangements: may not exceed 3" in any dimension

- 510 Fresh only
- 511 Dried only
- 512 Combination of Fresh and dried

Five Inch Arrangements: may not exceed 5" in any dimension

- 513 Fresh only
- 514 Dried only
- 515 Combination of Fresh and dried

Eight Inch Arrangements: may not exceed 8" in any dimension

- 516 Fresh only
- 517 Dried only
- 518 Combination of Fresh and dried

Twelve Inch Arrangements: may not exceed 12 inches in any direction

- 519 Fresh only
- 520 Dried only
- 521 Combination of Fresh and dried

Three Foot Arrangements: must exceed three feet in at least one dimension

- 522 Fresh only
- 523 Dried only
- 524 Combination of Fresh and dried

### **Arrangements Using Non-Floral Plant Materials, fresh plant materials only:**

- 525 Arrangement using foliage only
- 526 Arrangement using fruits and vegetables: fruit or vegetable foliage only
- 527 Arrangement using evergreen plant materials: berries and cones allowed. No wreaths or swags in this lot; please see Lot 538. For Trees, see Lot 539.

### **Arrangements Using Wood: Fresh and/or dry plant materials allowed**

- 528 Arrangements featuring decorative wood
- 529 Arrangements using decorative wood

### **Arrangements Using Dried Plant Materials: dried plant materials only**

- 530 Arrangement using dried flowers only; dried foliage required
- 531 Arrangement using dried plant materials

### **Arrangements for the Home: Fresh and/or dried, plant materials allowed; accessories required.**

- 532 Arrangement for Wall, Door or Window
- 533 Arrangement for Living Room or Family Room
- 534 Arrangement for Kitchen
- 535 Arrangement for Bedroom and/or Bath

### **Table Arrangements: Designer's choice of plant materials**

- 536 Arrangement for the Table (Decorative Unit-Centerpiece only)
- 537 Functional Table (All functional tables are set for the actual service of food; limited to two place settings; napkins required; maximum 12" cloth drop.) Name type of table: al fresco, semi-formal, tray, etc. Exhibitors may be

asked to supply table, limited to less than 3 sq. ft.

538 Exhibition Table, Type I

### **Arrangements for Holidays, Seasons and Festive Occasions:**

Fresh, dried or combination of plant materials permitted.

- 539 Winter Holidays-Dec through Feb-Design type=Traditional
- 539A Winter Holidays-Dec through Feb-Design type=Creative
- 540 Spring Holidays-March through May-Design type=Traditional
- 540A Spring Holidays-March through May-Design type=Creative
- 541 Summer Holidays-June through Aug-Design type=Traditional
- 541A Summer Holidays-June through Aug-Design type=Creative
- 542 Fall Holidays-Sept through Nov-Design type=Traditional
- 542A Fall Holidays-Sept through Nov-Design type=Creative
- 543 Festive Occasion-Design Type=Traditional
- 543A Festive Occasion-Design Type=Creative

**Creative Designs:** Any of the National Garden Club recognized creative designs may be entered in these lots. Please name the design type (i.e.: lighted, parallel, underwater, tapestry, etc.) Please pre-register any hanging type and lighted or kinetic design which requires an electrical outlet.

- 544 Creative Arrangement, fresh
- 545 Creative Arrangement, dried
- 546 Creative Arrangement, combination of fresh and dried

### **Traditional and Period Designs:**

- 547 Traditional, fresh only
- 548 Traditional, dried only
- 549 Traditional, combination of materials
- 550 Period Design, fresh only. Name the period.

**Thematic Designs:** These arrangements should interpret any universal theme such as love, religious expression, sorrow, joy, triumph, art, literature, painting, etc. No national flags or religious symbols may be used in water, out of respect for the nation or religious tradition.

- 551 Fresh plant material, Design type=Traditional
- 551A Dried plant material, Design type=Creative
- 552 Combination of fresh and dried plant material, Design type=Traditional
- 552A Combination of fresh and dried plant material, Design type=Creative

**Corsages and Boutonnieres:** Lots 554A - C and 555A - C are eligible for the Esther Speich Best Corsage/ Boutonniere Award. Two (2) Pins required for corsages; boutonnieres must have one pin and more than one flower.

- 554A Corsages using fresh plant materials: ribbons, trimmings, etc. must not be more than ½ of design
- 554B Corsages using dried plant materials: ribbons, trimmings, etc., must not be more than ½ of design
- 554C Corsages using fresh and dried plant materials: ribbons, trimmings, etc., must not be more than ½ of the design
- 555A Boutonnieres: using fresh plant materials: ribbons, trimmings, etc., must not be more than ½ of design
- 555B Boutonnieres: using dried plant materials: ribbons trimmings, etc., must not be more than ½ of the design
- 555C Boutonnieres: using fresh and dried plant materials: ribbons, trimmings, etc., must not be more than ½ of the design

### **Arrangements Featuring the Container:**

- 556 Flowers in a basket, fresh
- 557 Flowers in a basket, dried
- 558 Arrangement in an unusual container, fresh
- 559 Arrangement in an unusual container, dried

The Bitterroot: Montana chose a deserving state flower in the lovely Bitterroot. It has lent its common name to a mountain range, a valley, and a river. It has taken its scientific name, lewisia, from the famous explorer, Captain Meriwether Lewis, who was the first man to collect information about this exquisite plant. It is a lovely, low-growing pink bloom you'll find in the foothills during the spring and summer months.

Indian Paintbrush: Castilleja, commonly known as paintbrush, Indian paintbrush, or prairie-fire, is a genus of about 200 species of annual and perennial herbaceous plants native to the west of the Americas from Alaska south to the Andes, northern Asia, and one species as far west as the Kola Peninsula in northwestern Russia. It has a vibrant paintbrush-like appearance and rich scarlet hues that pop against the landscape.

Pollination is the process of moving pollen from one flower to another of the same species, which produces fertile seeds. Most flowering plants depend on native bees for pollination. Bees and other animals pollinate one-third of the food we eat – all kinds of fruits, vegetables, grains, nuts and beans. And they provide us with landscapes filled with wonderful wildflowers. Bees are by far the most effective pollinators because they only feed on flowers. Flowers attract and reward bees for their pollination service with sugar-rich nectar to fuel their flight and protein-rich pollen, or bee bread, to feed their young brood.

# DEPARTMENT N - CULINARY - FOODS

Superintendent: Carla Andrus (406) 835-3881

Entry: Tuesday, August 27 from 10 a.m. to 8 p.m.

Judging: Wednesday, August 28

## SPECIAL AWARDS & SPONSORS:

### Adult Division:

**Best of Show, Baked Foods** - \$25.00 - Terry Johnson & Elaine Husted  
(To win: must have entered at least 3 baked items and one must be a yeast exhibit)

**Champion Baked Foods** - \$10.00 - High Peaks Federal Credit Union

**Reserve Champion Baked Foods** - \$5.00 - Dennis & Jerry Jo Rehse

**Champion Quick Bread** - \$10.00 - Jeannette Redfield

**Champion Yeast Exhibit** - \$10.00 - Rocky Mountain ATM's

**Champion Honey Exhibit** - 5 lbs. Honey - Beaverhead Honey

**Champion Pie** - \$10.00 - Windmill Livestock, Tom & Sharon Rice

**Champion Cookies** - \$10.00 - Randy & Helen Tommerup

**Champion Cake** - \$10.00 - Randy & Helen Tommerup

**Champion Candy** - \$10.00 - American Legion Auxiliary

**Champion Canned Foods** - \$10.00 - Dennis & Jerry Jo Rehse

**Champion Canned Jam, Jelly or Preserves** - \$10.00 - Mary Ann Nicholas

**Champion Refrigerator / Freezer Foods** - \$10.00 - Richard & Dorothy Wheeler

**Champion Dehydrated Food** - \$10.00 - Terry Johnson & Elaine Husted; Mike Coleman Construction

**Champion Dill Pickles** - \$10.00 - Dr. Ron Loge

**Champion Other Pickles** - \$10.00 - Farmers Union Insurance, Judy Siring Agency; Mclsaac Appraisals

**Best of Show Canned Foods** - \$15.00 - Beaverhead County Fair

(To win: must have entered at least 3 canned items)

**Best of Show Canned Jam, Jelly or Preserves** - \$15.00 - Beaverhead County Fair

(To win: must have entered at least 3 canned items)

**Superintendent's Award** - \$15.00 - Beaverhead County Fair

(To win: must have entered at least 5 culinary items)

### Professional Division:

**Superintendent's Award Professional** - \$15.00 - American Legion Auxiliary

(To win: must have entered at least 5 culinary items)

**Best of Show Professional Exhibit** - \$15.00 - American Legion Auxiliary

**Champion Canned Food** - \$15.00 - American Legion Auxiliary

**Champion Baked Food** - \$15.00 - Beaverhead County Fair

**Champion Dehydrated Food** - \$15.00 - Beaverhead County Fair

**Champion Fridge/Freezer Food** - \$15.00 - Beaverhead County Fair

**Judge's Choice** - \$15.00 - Beaverhead County Fair

### Youth Division:

**Champion Baked Foods** - \$10.00 - Pat Brown

**Reserve Champion Baked Foods** - \$5.00 - Richard & Dorothy Wheeler

**Champion Yeast Exhibit** - \$10.00 - Candy Hoerning, Justice of the Peace

**Reserve Champion Yeast Exhibit** - \$5.00 - Terry Johnson & Elaine Husted

**Champion Honey Exhibit** - 5 lbs. Honey - Beaverhead Honey

**Champion Quick Bread** - \$10.00 - Great Harvest Franchising, Inc.

**Reserve Champion Quick Bread** - \$5.00 - Richard & Dorothy Wheeler

**Grand Champion Pie** - \$10.00 - Michele Rieber

**Reserve Champion Pie** - \$5.00 - Randy & Helen Tommerup

**Champion Cake** - \$10.00 - Mclsaac Appraisals

**Reserve Champion Cake** - \$5.00 - LS Ready Mix



**Champion Cookies** - \$10.00 - Mclsaac Appraisals  
**Reserve Champion Cookies** - \$5.00 - Mclsaac Appraisals  
**Champion Candy** - \$10.00 - Richard & Dorothy Wheeler  
**Reserve Champion Candy** - \$5.00 - Richard & Dorothy Wheeler  
**Champion Canned Foods** - \$10.00 - Richard & Dorothy Wheeler  
**Reserve Champion Canned Foods** - \$5.00 - Richard & Dorothy Wheeler  
**Champion Refrigerator Freezer Foods** - \$10.00 - Pat Brown  
**Reserve Champion Refrigerator Freezer Foods** - \$5.00 - Terry Johnson & Elaine Husted  
**Busy Baker Award** - \$15.00 - Michele Rieber  
(To win: must have entered at least 5 culinary items)  
**Superintendent's Award** - \$15.00 - Michelle Rieber  
(To win: must have entered at least 5 culinary items)

### Family Fun Division

**Champion Family Award** - \$25.00 - Beaverhead County Fair  
**Reserve Champion Family Award** - \$20.00 - Beaverhead County Fair

## Adult Point Prize Awards

### Point Prize - Baked Foods

**1st Place** - \$15.00 - Dr. Ron Loge; Vigilante Electric  
**2nd Place** - \$10.00 - Great Harvest Franchising, Inc.  
**3rd Place** - \$5.00 - Sundowner Motel

### Point Prize - Canned Foods

**1st Place** - \$15.00 - Vigilante Electric Co-op  
**2nd Place** - \$10.00 - Mary Ann Nicholas  
**3rd Place** - \$5.00 - Candy Hoerning, Justice of the Peace

### Point Prize - Refrigerator Foods

**1st Place** - \$15.00 - Dr. Ron Loge  
**2nd Place** - \$10.00 - Terry Johnson & Elaine Husted  
**3rd Place** - \$5.00 - Randy & Helen Tommerup

Point Prizes are awarded based on accumulated points  
for ribbons awarded.

Purple=5, Blue=3, Red=2, White=1

## Department N - Culinary

### General Rules:

1. Limit of one entry per lot for each exhibitor.
2. All containers must be easy to open and reclose for sampling by the judges.  
(Ensure that canning rings are not stuck—use twisty ties instead of tape, etc.)
3. Recipe required for Low-sugar, Honey, Gluten-free entries, and anything with artificial sweeteners.
4. Youth must designate age on entry form & tag and add 'Y' to the lot number if 11 years or younger (106Y), or add 'YY' to the lot number if 12 years or older (106YY).
5. Professionals are defined as anyone who is a chef, cooks at a restaurant or catering business, has a Home Economics degree, or sells food that derives 50% or more of their income. Add 'P' to lot number (106P).



## Division I – Canned Foods

1. All entries must be prepared by the exhibitor since last year's Fair.
2. Each entry must be labeled with:
  - a. name of food
  - b. date preserved
  - c. method used (water-bath, steam, pressure, etc. — paraffin seal is not acceptable)

### Standards for Judging Canned Foods

Appropriate labeling, fullness of jar, uniformity of size & arrangement, condition of product & liquid, color, flavor & aroma.

#### **Fruit**

- 101 Apples
- 102 Applesauce
- 103 Apricots
- 104 Cherries
- 105 Peaches
- 106 Pears
- 107 Plums
- 108 Rhubarb
- 109 Berries
- 110 Fruit juice
- 111 Fruit sauce
- 112 Mixed fruit
- 113 Other fruit

#### **Meats**

- 114 Fruit mincemeat
- 115 Meat
- 116 Fish
- 117 Poultry
- 118 Other canned meat
- 119 Broth or stock

#### **Vegetables**

- 121 Asparagus
- 122 Beans
- 123 Beets
- 124 Carrots
- 125 Corn
- 126 Peas
- 127 Tomatoes
- 128 Stewed Tomatoes
- 129 Tomato Sauce
- 130 Tomato Juice
- 131 Sauerkraut
- 132 Pumpkin or Squash
- 133 Mixed vegetables
- 134 Other vegetables
- 135 Soup or Chili
- 136 Other Sauce (chili, BBQ, etc.)
- 137 Salsa-Tomato
- 138 Salsa-Other
- 139 Salsa-Fruit

#### **Pickles & Relish**

- 141 Beet pickles- sliced
- 142 Beet pickles- whole
- 143 Bean pickles
- 144 Zucchini pickles
- 144a Vegetable pickles
- 145 Mixed vegetable pickles
- 146 Cucumber pickles- dill or sour
- 147 Cucumber pickles- sweet
- 148 Bread & Butter pickles
- 149 Tomato pickles
- 150 Crabapple pickles
- 151 Watermelon pickles
- 152 Other pickles
- 153 Chutney
- 154 Beet relish
- 155 Mixed Vegetable relish
- 155a Cucumber relish
- 156 Zucchini relish
- 156a Fruit relish
- 157 Other relish

**Jelly** consists of firmly jelled translucent fruit juice.

**Jams** use crushed/chopped fruit and are not as stiff as jelly.

**Preserves** have firm fruit pieces in jelled syrup.

**Conserves** are multi-fruit with the addition of optional nuts & raisins.

**Fruit Butter** consists of pulp cooked until thick.

#### **Jelly**

- 161 Apple jelly
- 162 Raspberry jelly
- 163 Gooseberry jelly
- 164 Currant jelly
- 164a Mixed berry jelly
- 165 Other berry jelly
- 166 Vegetable jelly
- 167 Cherry jelly
- 168 Chokecherry jelly
- 169 Grape jelly
- 169a Plum jelly
- 170 Low-sugar jelly
- 171 Other jelly

#### **Jams**

- 175 Strawberry jam
- 176 Raspberry jam
- 177 Blueberry jam
- 178 Mixed Berry jam
- 179 Chokecherry jam
- 180 Gooseberry jam
- 181 Apricot jam
- 181a Apricot-Pineapple jam

- 182 Peach jam
- 183 Cherry jam
- 183a Apple jam
- 184 Rhubarb-Strawberry jam
- 185 Rhubarb-other fruit jam
- 186 Plum jam
- 186a Grape jam
- 187 Mixed fruit jam
- 188 Vegetable jam
- 189 Low-sugar jam
- 190 Other jam

#### **Preserves, etc.**

- 191 Rhubarb preserves
- 191a Berry preserves
- 192 Low-sugar preserves
- 193 Other preserves
- 194 Marmalade
- 195 Conserves
- 196 Apple Butter
- 197 Other Fruit Butter
- 198 Single Fruit Syrup
- 199 Mixed Fruit Syrup



## Division II – Baked Foods

1. No commercially prepared mixes may be used, except in lot #461.
2. Entries to be on small disposable plate, placed inside easy-open plastic bag— however, large entries, such as decorated cakes, may require covered board & plastic wrap.
3. Quantity: ½ loaf of breads, including tea rings, etc. (about 6" of long thin braids, etc.)  
4 of cookies, doughnuts, candy, rolls & other small items.  
¼ of pies & cakes— except empty pie shell & decorated cakes.

### Standards for Judging Baked Foods

Uniformity and appropriateness of size, shape, color, arrangement, flavor, aroma, moistness, texture, tenderness etc.

#### **Yeast Breads**

- 201 White bread
- 202 Whole Wheat bread
- 203 Entirely Whole Wheat bread
- 204 Rye bread
- 205 French bread
- 206 Oatmeal bread
- 207 Batter bread or unkneced
- 208 Swedish tea ring or braids
- 209 Povitica
- 210 Dinner rolls
- 211 Whole Wheat rolls
- 212 Hamburger or Hot Dog buns
- 213 Cinnamon rolls (unfrosted)
- 214 Sticky buns
- 215 Fancy rolls
- 216 Raised Doughnuts (unsugared)
- 217 Bagels
- 218 Bread Sticks
- 219 Pretzels
- 220 Other yeast bread

#### **Quick Breads**

- 241 Date bread
- 242 Apple bread
- 243 Banana bread
- 244 Rhubarb bread
- 245 Other fruit bread
- 246 Zucchini-Nut bread
- 247 Zucchini-Fruit-bread
- 248 Zucchini-other bread
- 248a Zucchini only bread
- 249 Pumpkin bread
- 250 Carrot bread
- 251 Crackers
- 251a Cornbread
- 252 Biscuits- plain
- 253 Biscuits- herb, cheese, etc.
- 254 Muffins- plain
- 255 Muffins- fruit, cheese, etc.
- 256 Scones
- 257 Doughnuts (unsugared)
- 258 Other quick bread

#### **Sourdough**

- 261 White bread
- 262 Whole Wheat bread
- 263 French bread
- 264 Cake
- 265 Doughnuts
- 266 Biscuits
- 267 Dinner Rolls
- 268 Pancakes
- 269 Other sourdough item



#### **Cookies**

- 301 Oatmeal drop cookies
- 302 Chocolate drop cookies
- 303 Molasses cookies
- 304 Rolled sugar cookies
- 305 Other sugar cookies
- 306 Pinwheel cookies
- 307 Ginger cookies
- 308 Filled cookies
- 308a Sandwich cookies
- 309 Peanut Butter cookies
- 310 Ice box cookies
- 311 Fudge or Chocolate Brownies
- 312 Other brownies (blonde, etc.)
- 313 Bar cookies- fruit
- 314 Bar cookies- other
- 315 Spritz cookies
- 316 No-bake cookies
- 316a Rice Krispies Treats
- 317 Shaped or molded cookies
- 318 Tollhouse Chocolate chip
- 319 Other Chocolate chip cookies
- 320 Other chip (mint, cherry, etc.)
- 321 Coconut cookies
- 322 Carrot cookies
- 323 Pumpkin cookies
- 324 Zucchini cookies
- 325 Shortbread cookies
- 326 Biscotti
- 327 Snickerdoodles
- 328 Other cookies

## Cakes

- 341 White layer cake- frosted
- 342 Chocolate layer cake- frosted
- 343 Angel Food cake- unfrosted
- 344 Sponge cake- unfrosted
- 345 Chiffon cake- unfrosted
- 346 Pound cake- unfrosted
- 347 Jelly Roll cake
- 348 Carrot cake
- 349 Oatmeal cake
- 350 Spice cake
- 351 Applesauce cake
- 352 Zucchini cake
- 353 Fruitcake
- 354 Sheet cake
- 355 Other cakes
- 356 Cupcakes- unfrosted
- 357 Cupcakes- frosted
- 358 Cupcakes- decorated
- 359 Decorated cake



## Honey *(sweetener is 50% honey min.)*

- 401 Honey bread- white
- 402 Honey bread- whole wheat
- 403 Honey Rolls- white
- 404 Honey Rolls- whole wheat
- 405 Honey Quick bread
- 406 Honey Muffins
- 407 Honey Cookies
- 408 Honey Cakes
- 409 Baklava
- 410 Granola (½ pint)
- 411 Other Honey item

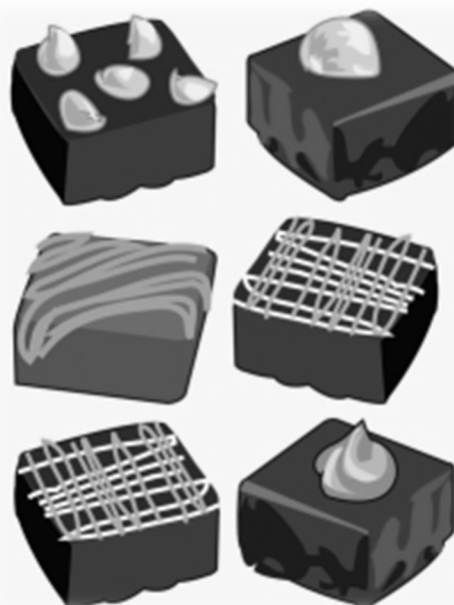


## Pies

- 421 Apple pie
- 422 Cherry pie
- 423 Peach pie
- 424 Berry pie
- 425 Mincemeat pie
- 426 Rhubarb pie
- 427 Nut pie (pecan, cashew, etc.)
- 428 Other pie
- 429 Unfilled pastry pie shell

## Candy

- 441 Fudge
- 442 Divinity
- 443 Peanut Brittle
- 444 Other Nut Brittle
- 445 Nut Clusters or Turtles
- 446 Truffles
- 447 Caramels
- 448 Party Mints
- 449 Chocolates
- 450 Almond Roca
- 451 Other candy



## Miscellaneous

- 461 Item using a commercial mix
- 462 Ethnic food
- 463 Baked by men
- 464 Low-sugar baked item
- 465 Gluten-free baked item
- 466 Other miscellaneous item

## Division III – Fridge & Freezer Foods

1. Enter pies, cubes of butter, etc. on a small disposable plate, placed inside an easy-open plastic bag.
2. Enter salads, dressings, puddings, jam, etc. in an easy-open ½ pint container.
3. Beverages may be in larger containers, as individually appropriate.

### Standards for Judging Fridge & Freezer Foods

Eye appeal, color, texture, flavor & aroma.

#### **Puddings & Similar Desserts**

- 501 Custard
- 502 Pudding
- 503 Mousse
- 504 Yogurt-plain
- 505 Yogurt-flavored
- 506 Cheesecake
- 507 Pumpkin Roll
- 508 Cream Puffs or Eclairs (filled)
- 509 Other refrigerated dessert

#### **Pies- Refrigerated (even if baked)**

- 521 Strawberry pie
- 522 Cream pie
- 523 Chocolate pie
- 524 Lemon Meringue pie
- 525 Chiffon-type pie
- 526 Pumpkin Pie
- 527 Other refrigerated pie

#### **Salads & Miscellaneous**

- 541 Coleslaw salad
- 542 Bean salad
- 543 Potato salad
- 544 Pasta salad
- 545 Gelatin salad
- 546 Other salad
- 547 Salad dressing
- 548 Sauce
- 549 Dip
- 550 Butter
- 551 Beverage
- 552 Refrigerator Pickle
- 553 Hors d'oeuvres
- 554 Other refrigerated food

#### **Frozen Foods**

- 561 Beans
- 562 Peas
- 563 Corn
- 564 Other vegetable
- 565 Strawberries
- 566 Raspberries
- 567 Peaches
- 568 Other fruit
- 569 Strawberry freezer jam
- 570 Raspberry freezer jam
- 571 Other Berry freezer jam
- 572 Peach freezer jam
- 573 Other fruit freezer jam
- 574 Freezer jelly
- 575 Frozen juice

#### **Frozen Desserts**

- 581 Ice Cream
- 582 Frozen Yogurt
- 583 Other frozen dessert

## Division IV – Dehydrated Foods

1. Display entries in easy-open, ½ pint containers, or taller if needed for noodles, rolls of leather, etc.
2. Fruit leather may be rolled and placed on a small disposable plate, inside an easy-open plastic bag.

### Standards for Judging Dehydrated Foods

Appropriate labeling, fullness of container, uniformity of size & arrangement, condition of product, color, flavor & aroma. Most fruits should be pliable and leathery, except bananas, citrus peel, and coconut which should be crisp. Most vegetables should be crisp except carrots and tomatoes which will be slightly leathery. Jerky should be crackly to leathery.

#### **Fruit**

- 601 Apples
- 602 Apricots
- 603 Bananas
- 604 Cherries
- 605 Pears
- 606 Plums
- 607 Peaches
- 608 Other fruits
- 609 Fruit Leather- single fruit
- 610 Fruit Leather- mixed fruits

#### **Vegetables**

- 621 Carrots
- 622 Celery
- 623 Corn
- 624 Onions
- 625 Peas
- 626 Peppers
- 627 Potatoes
- 628 Other vegetable

#### **Herbs**

- 641 Parsley
- 642 Chives
- 643 Lovage
- 644 Oregano
- 645 Sage
- 646 Other herb
- 647 Mint

#### **Miscellaneous**

- 661 Jerky
- 662 Noodles
- 663 Other item
- 664 Dehydrated Display  
(5 or more items)



## Division V – Family Fun

### Standards for Judging

Same as in the respective divisions listed previously.

1. This is for 2 or more family members to compete directly with each other.
2. Family members include parents, children, grandchildren, siblings, aunts, uncles, cousins, steps, etc. Friends do not count as that is what the fair is all about, friends bringing items to the fair.
3. Each family member will make the item using the SAME RECIPE, but NOT the SAME BATCH.
4. You are welcome to make any of the lots listed previously: Canned foods, Baked foods, Fridge & Freezer foods, and Dehydrated foods.
5. Label the tag with F and the lot number. Example: F 309. Note: Youth still add 'Y' to the end of the lot number if 11 years or younger (309Y), or add 'YY' to the end of the lot number if 12 years or older (309YY).
6. Be sure to let the superintendent know that it is part of the Family Fun Division, and it will be kept separate from all the other entries. The superintendent will put a unique mark on all your family's tags so that no one else has their entries judged against your family. If you bring yours to the fair at a different time than another family member, that is okay, as long as the superintendent knows and sets it aside to wait for the other family member's entry.
7. The judge will make the choice between just your family members, so you know who's turned out the best this year.
8. No matter who gets the ribbon, remember you are all to be congratulated because you participated. And think of all that you didn't bring to the fair that you get to eat!

Example: My son, his 2 daughters, and I all want to make brownies and see whom the judge picks as the best. We would each make a batch of brownies using the same recipe. We each bake our own batch, cut them, put them on the plate, and label them. I would label mine \_ 311. My son would do the same and his children would add the Y or YY. When we take in our items, we let the superintendent know that they are all to be judged together so our tags can be given a unique mark to show we are one family.

# CREATE ~ A ~ PICTURE CONTEST

*Boys and Girls Ages 3-12*

Using Crayons, markers, paint, etc., create a picture using the theme "Favorite Fair Memories." Entries must be submitted to the Arts & Hobbies Building by 8 p.m. Wednesday of Fair. Please fill out a fair tag for your entry. All entries will be on display in the Arts & Hobbies Building during the fair.

**AGE DIVISIONS:** 3-4, 5-6, 7-8, 9-10, 11-12

**PRIZES:** 1<sup>ST</sup> ~ \$10.00    2<sup>ND</sup> ~ \$5.00    3<sup>RD</sup> ~ \$3.00

**\*\*PRIZES AWARDED IN EACH AGE DIVISION\*\***

This contest is held In Memory of Georgiana & Hans Andersen, sponsored by their families. This was sponsored by Georgiana for years and she always looked forward to seeing the many pictures on display at the fair!



Awards Sponsored  
by Keith & Verla  
Andersen

# Beaverhead County Fair

## Open 4D Barrel Race

Wednesday, August 28<sup>th</sup>

Dillon, MT - Harry Andrus Arena

- \$1,000 ADDED MONEY
- \$100 ADDED MONEY IN THE YOUTH
- 80% PAYOUT
- UBRC SIDEPOTS
- NBHA CO-APPROVED



### ENTRY FEES

\$47 OPEN

\$37 YOUTH (18 & UNDER)

\$10 PEE WEE (8 & UNDER)

TIME ONLY RUNS \$5 EACH OR 3/\$12

\$10 Arena/Office Fee

---

ENTRIES OPEN AT 3:00 P.M. / PRE-ENTRY ENCOURAGED

ENTRIES CLOSE AT 5:30 P.M.

TIME ONLY RUNS FROM 3:00-5:30 P.M.

YOUTH RUNS START AT 6:30 P.M. – OPEN TO FOLLOW

For more information call Crissie Hansen @ (406) 925-2550

Youth & Pee Wee Buckles and Added Money Sponsored By:

Chris & Kristi Colleran – MT Home Ranch, Beaverhead Motors,  
Ramblin' Rose Drill Team, Ted Harrison, Tom Tash DL Ranch, General  
Welding & Repair, Flying S Title & Escrow, McLeod Realtors – Gina Ossello,  
Mountainview Insurance, A & W of Whitehall, Harrington Pepsi,  
Turney Repair & Towing, Triple Crown Feeds, Axmen Feeds, Ross Hansen  
Ranch, First West Insurance – RJ Fitzgerald

***Beaverhead County Fair***  
***Team Roping Classic***  
**Thursday, August 29<sup>th</sup>**

**ENTER AT 5:00 P.M.**  
**ROPE AT 6:00 P.M.**

**14 HANDICAP**

**Beaverhead County Fairgrounds**  
**Dillon, MT - Harry Andrus Arena**

**FOR MORE INFORMATION AND ENTRY CALL**  
**Pete Hansen at (406) 865-0521**





# *Beaverhead County Fair*

## *Team Break-Away Roping*

Beaverhead County Fairgrounds  
Dillon, MT - Harry Andrus Arena

**Friday, August 30<sup>th</sup>**  
**8:00 A.M.**

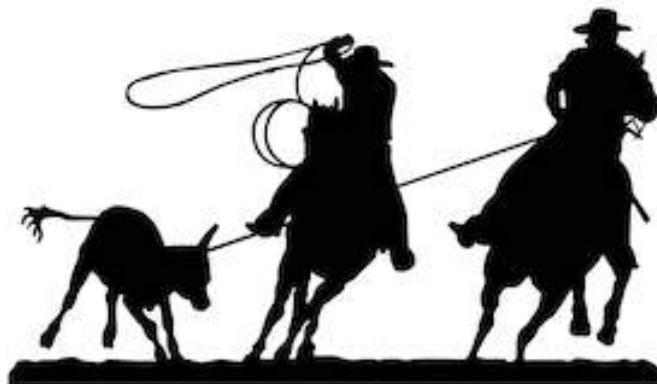
*Enter at 7:00 A.M. – Rope at 8:00 A.M.*

*Pick 1 – Draw 1 for \$50*

*Enter 3x or Draw 6 – 3 Head Average*

**FOR MORE INFORMATION OR ENTRY CALL**  
**Pete Hansen at (406) 865-0521**

**CASH ONLY FOR PAYOUT PURPOSES**



# ***BEAVERHEAD COUNTY FAIR TEAM BRANDING***



***FRIDAY, AUGUST 30<sup>TH</sup>  
10:00 A.M.***

***(ENTRIES OPEN AT 8:00 A.M. IN COWBOY BOOTH)***

***4 MAN TEAMS • BIG PAYOUTS***

For more information or to pre-enter contact:  
Jill Anderson at 406.490.3263

**CASH ENTRIES ONLY FOR PAYOUT PURPOSES**

**BEAVERHEAD COUNTY FAIR**

# **RANCH RODEO**

**FRIDAY, AUGUST 30<sup>TH</sup>**

**5:00 P.M.**

**BEAVERHEAD CO. FAIRGROUNDS - DILLON, MT**



**FREE  
ADMISSION  
WITH FAIR  
BUTTON**

**TO ENTER CONTACT:  
JOHN WARD  
(406) 925-1173**

**Entries open August 15<sup>th</sup>  
at 7:00 a.m.  
NO EARLY ENTRIES**



# BEAVERHEAD COUNTY FAIR

## TRUMAN McCANDLESS SATURDAY ARENA EVENTS

Saturday, August 31<sup>st</sup>

**Start Times: 8:00 a.m.** (Rodeo Events) **9:00 a.m.** (Mutton Bustin' & Steer Riding)

Jill Anderson, Arena Secretary

Questions, please contact: 406.490.3263

**OPEN TO CURRENT RESIDENTS OF BEAVERHEAD AND MADISON COUNTIES AND FAMILIES ELIGIBLE FOR MELROSE 4-H CLUBS.**

**ENTRY DEADLINE: THURSDAY, AUGUST 29<sup>th</sup> BY 5:00 P.M.**

**AGE DIVISIONS:** Refer to these ages for all races as of day of event.

**PEE WEE:** 4-7 years of age – All contestants must handle their own horse. No leading will be allowed.

**SUPER STARTER:** 8-10 years of age

**JUNIOR:** 11-13 years of age

**SENIOR:** 14-18 years of age



---

**PRIZE MONEY & POINTS:** 5% will be taken off top of all events for expenses.

**20 or less entrants:**

1st place - Purse, 40% of entry fee & 6 points

2nd place - 30% of entry fee and 5 points

3rd place - 20% of entry fee and 4 points

4th place - 10% of entry fee and 3 points

**Over 20 entrants:**

1st place - Purse, 29% of entry fee & 6 points

2nd place - 24% of entry fee and 5 points

3rd place - 19% of entry fee and 4 points

4th place - 14% of entry fee and 3 points

5th place - 9% of entry fee and 2 points

6th place - 5% of entry fee and 1 point

---

## ANDRUS MEMORIAL ALL-AROUND BUCKLES

The top point winner in each division will be awarded a buckle. Calf Riding and Mutton Bustin' do not count toward the all-around award. Award buckles are sponsored in part by the Andrus Family in loving memory of their parents Harry & Helen Andrus and their father's lifelong involvement in the Beaverhead County Fair and his major role in instigating the Saturday Arena Events.

## Event Guidelines & Rules

1. Rodeo events will start promptly at 8:00 a.m.
2. Mutton Bustin' and Steer Riding will start at approximately 9:00 a.m. Please report to chute side of arena by 8:30 a.m.
3. No lead lines in any division. Contestants must be able to control their own horse!!
4. Cowboy Hats or Helmets, Long Sleeved Shirts, and Boots required for all events.
5. Contestants must be in warm-up area prior to event. Name will be called 3 times and then disqualified.
6. Mutton Bustin' and Steer Riding participants are required to wear a helmet and vest.
7. Entries are limited to 1 entry per person per event. If entrant does not wish to compete in his/her age group, he/she can move up in a division.

# ENTRY BLANK - SATURDAY ARENA EVENTS

**ENTRY DEADLINE: THURSDAY, AUGUST 29<sup>th</sup> BY 5:00 P.M.**

**\*Contestants must be current residents of Beaverhead or Madison Counties or eligible for Melrose 4-H Clubs. Thanks for your cooperation!**

**\*No LEAD LINES. All contestants must be able to control their own horse. Thanks for your cooperation!**

## BARREL RACING

- Pee Wee: Entry fee \$5.00 (NO LEAD LINE)
- SS: Entry fee \$5.00
- Junior: Entry fee \$5.00
- Senior: Entry fee \$10.00

## POLE BENDING

- Pee Wee: Entry fee \$5.00 (NO LEAD LINE)
- SS: Entry fee \$5.00
- Junior: Entry fee \$5.00
- Senior: Entry fee \$10.00

## BREAK-AWAY ROPING

**One minute time limit.**

- Junior: Entry fee \$5.00
- Senior: Entry fee \$10.00

**MUTTON BUSTIN':** Open to 4-9 year olds with a weight restriction of no more than 55 lbs. Ride is timed for 6 seconds. All riders required to wear a helmet and vest. NO EXCEPTIONS! Participation does not count toward AA Awards, Prize Money, or Points.

- Ages 4-9 and under 55 lbs. Entry fee \$10.00

## KEYHOLE RACE

- Pee Wee: Entry fee \$5.00 (NO LEAD LINE)
- SS: Entry fee \$5.00
- Junior: Entry fee \$5.00
- Senior: Entry fee \$10.00

## STAKE RACE

- Pee Wee: Entry fee \$5.00 (NO LEAD LINE)
- SS: Entry fee \$5.00
- Junior: Entry fee \$5.00
- Senior: Entry fee \$10.00

**STEER RIDING:** All riders required to wear helmet and vest. NO EXCEPTIONS! Participation does not count toward AA Awards, Prize Money, or Points.

- Ages 9-11 Entry fee \$10.00
- Ages 12-15 Entry fee \$10.00

Beaverhead County Courthouse  
2 S. Pacific  
Dillon, MT 59725

## OR

Bring to the Fair Office by Thursday @ 5 p.m. the week of fair

## OR

E-Mail to keeleyfitz@hotmail.com

## **BRING ENTRIES TO:**

**Contestant Name:** \_\_\_\_\_

**Total Entry Fees:** \_\_\_\_\_ **Age (As of day of event):** \_\_\_\_\_

**Address:** \_\_\_\_\_

**City:** \_\_\_\_\_ **Zip Code:** \_\_\_\_\_

**County of Residence:** \_\_\_\_\_ **Phone Number:** \_\_\_\_\_

**Parent/Guardian Signature:** \_\_\_\_\_ **Date:** \_\_\_\_\_

**Entries Due Thursday, August 29<sup>th</sup> by 5:00 p.m.**

# SATURDAY ARENA EVENTS

## THANKS TO OUR GENEROUS SPONSORS

### BARREL RACING

**Pee Wee** \$15.00 Purse sponsored by Blacktail Services Inc., Rick Smith  
**SS** \$15.00 Purse sponsored by H & R Block  
**Junior** \$15.00 Purse sponsored by Ed & Barb Malesich  
**Senior** \$15.00 Purse sponsored by Ed & Barb Malesich

### POLE BENDING

**Pee Wee** \$15.00 Purse sponsored by Rouse Masonry Construction  
**SS** \$15.00 Purse sponsored by The Wisdom Cabin  
**Junior** \$15.00 Purse sponsored by Farmers Union Insurance, Judy Siring Agency  
**Senior** \$15.00 Purse sponsored by Garrison Ranches, Inc.

### KEYHOLE RACE

**Pee Wee** \$15.00 Purse sponsored by H & R Block  
**SS** \$15.00 Purse sponsored by Raffety Quarter Horses, Mark & Bobbie Raffety  
**Junior** \$15.00 Purse sponsored by The Wisdom Cabin  
**Senior** \$15.00 Purse sponsored by Womack's Printing

### STAKE RACE

**Pee Wee** \$15.00 Purse sponsored by Bev Rehm  
**SS** \$15.00 Purse sponsored by Beaverhead Republican Party  
**Junior** \$15.00 Purse sponsored by Truman McCandless Family  
**Senior** \$15.00 Purse sponsored by Ed & Barb Malesich

### BREAK-AWAY ROPING

**Junior** \$15.00 Purse sponsored by W. R. Cleverley Farm & Ranch  
**Senior** \$15.00 Purse sponsored by Hansen Livestock Company

### STEER RIDING

Ages 9-11 Buckle sponsored by First West Insurance—RJ Fitzgerald  
Ages 12-15 Buckle sponsored by Giem Angus & Lakeland Feed

### MUTTON BUSTIN'

Ages 4-9 Buckle sponsored by Farmers Union Insurance, Judy Siring Agency in Memory of Mike Rice



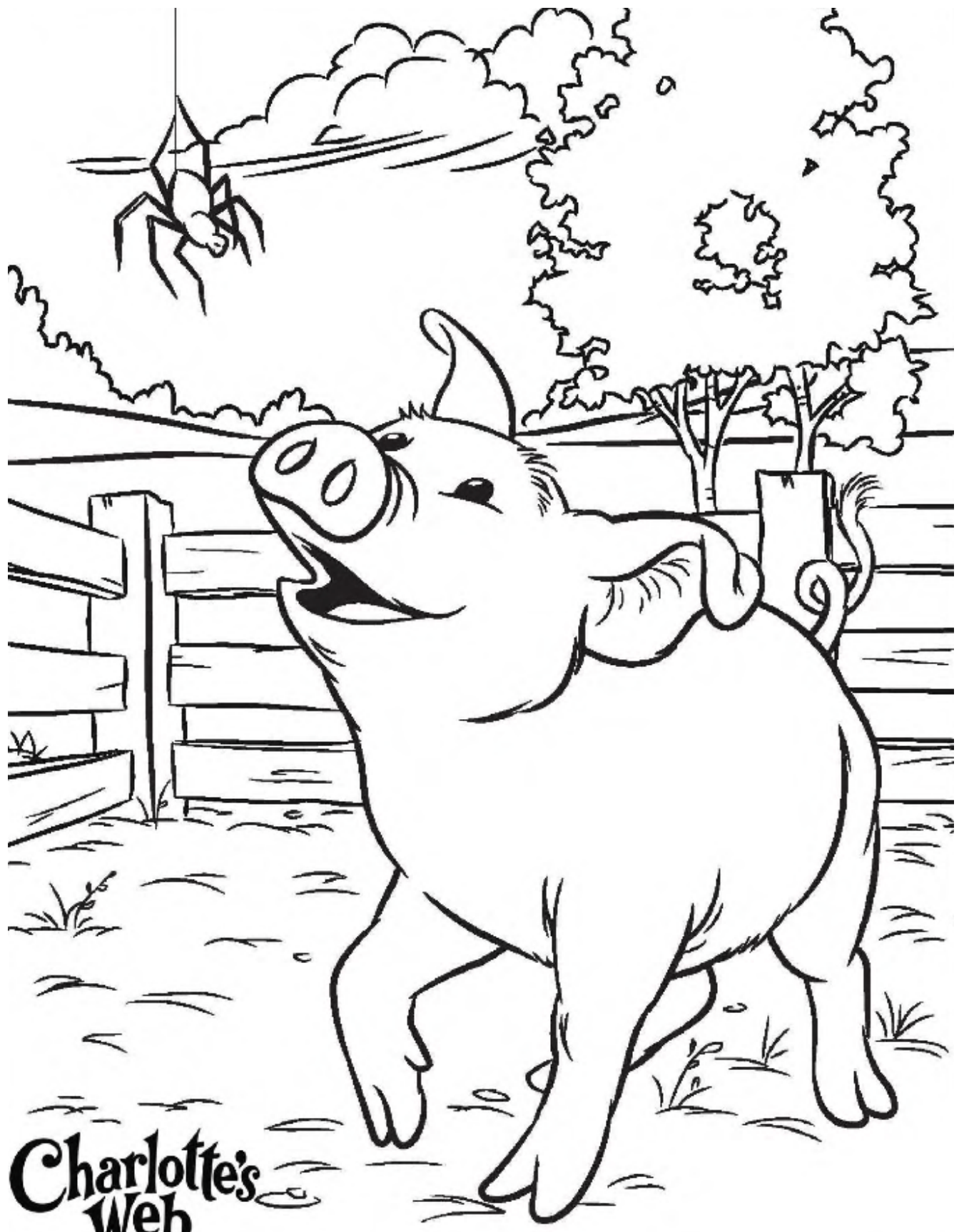
### ALL-AROUND BUCKLE SPONSORS

**Pee Wee Division** - Sponsored by Andrus Family and Dennis and Jerry Jo Rehse  
**Super Starter Division** - Sponsored by Andrus Family and Andy & Peri Suenram  
**Junior Division** - Sponsored by Andrus Family and H & R Block  
**Senior Division** - Sponsored by Andrus Family and The Wisdom Cabin

**SUMMER NIGHTS  
NEED SOBER  
DRIVERS!**



**DON'T DRINK AND  
DRIVE. PERIOD.**



**Charlotte's  
Web**



# **2023 Beaverhead County Fair**

## **4-H & FFA Market Livestock Sale Buyers**

---

Allen Landscaping & Nursery

AgWest Farm Credit

Arcadia Ag

Bank of Commerce

Bar Double T Ranch

Barrett Hospital & Healthcare Provider Clinic

Barretts Minerals

Beaverhead Home & Ranch, Chance Bernall

Beaverhead Meats

Beaverhead Motors & Beaverhead Motor Sports

Bergeson Properties

Judge Luke Berger

Big Tyme Sportswear

Browne's Bridge Vet Service

Clinton Burk

Carter Creek Ranch

Carquest

Chokecherry Cattle Co., Jim & Cheyenne Garrison

Chuteside Vet Service

Circle 3 Ranch

Creger Family Eyecare

Deere Creek Excavation

Diamond O Ranch

The Den Steakhouse

Dillon Jaycees

Doering Trusses

Double U Land

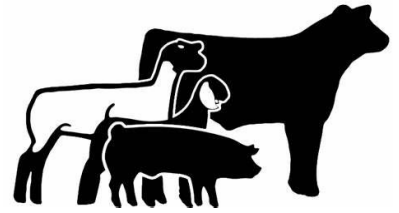
Duffner Ranch

East Bench Grain

18 Land Co.

El Taco Grande & Subway of Salmon, ID

Elevation Agronomy



**Thank You!**

Brooke & Cal Erb  
Farm Bureau Insurance  
Farmers Union, Judy Siring  
4M Weed Control  
Frontline Ag  
Garrison Ranches, Bill & Floydena Garrison  
Hagenbarth Management  
The Good Life  
Craig Hansen Ranches  
Harrington Pepsi  
Helle Livestock  
Hillcrest Bank  
JGN Law Office  
Jerry Wessels Tire Center  
Jules Marchesseault Ranch  
L&S Meats  
Malesich Ranch Co.  
Mama T's Legacy  
Allen & Yvonne Martinell  
Matador Ranch & Cattle  
Montana Livestock Auction  
Mountain View Insurance  
Murdoch's Ranch & Home Supply  
Northern Livestock Video, Jim Sitz  
Osburn Fencing  
Papa T's  
Pioneer Federal Savings & Loan  
Pivots Plus  
PhD Fence  
Pomp's Tire Service  
Probst Ranch  
RE Miller & Sons  
Rocky Mountain Supply  
Rowe Excavation  
Safeway  
Schuett Farms

*Thank You!*

747 General Contracting  
Shepherds Garage  
Sitz Angus Ranch & Livestock, Jim & Tammi Sitz  
Smith 6-S Livestock  
Southern MT Telephone Co.  
Stockman Bank  
Andy & Peri Suenram  
Sundowner Motel  
Tamcke Livestock  
Judy Tash  
Tash Livestock  
Tash Roscoe Haying Company  
Taylor Realtors, Vana Taylor  
Town & Country Foods  
Trapper Creek Ranch  
UMW Dining  
White Cloud Outfitters, Jessie Farr

*Thank You!*

---

## 2024 4-H and FFA Market Livestock Sale



**Saturday, August 31<sup>st</sup>**  
**Buyer's BBQ @ 11:30 a.m.**  
**Sale @ 1:30 p.m.**

